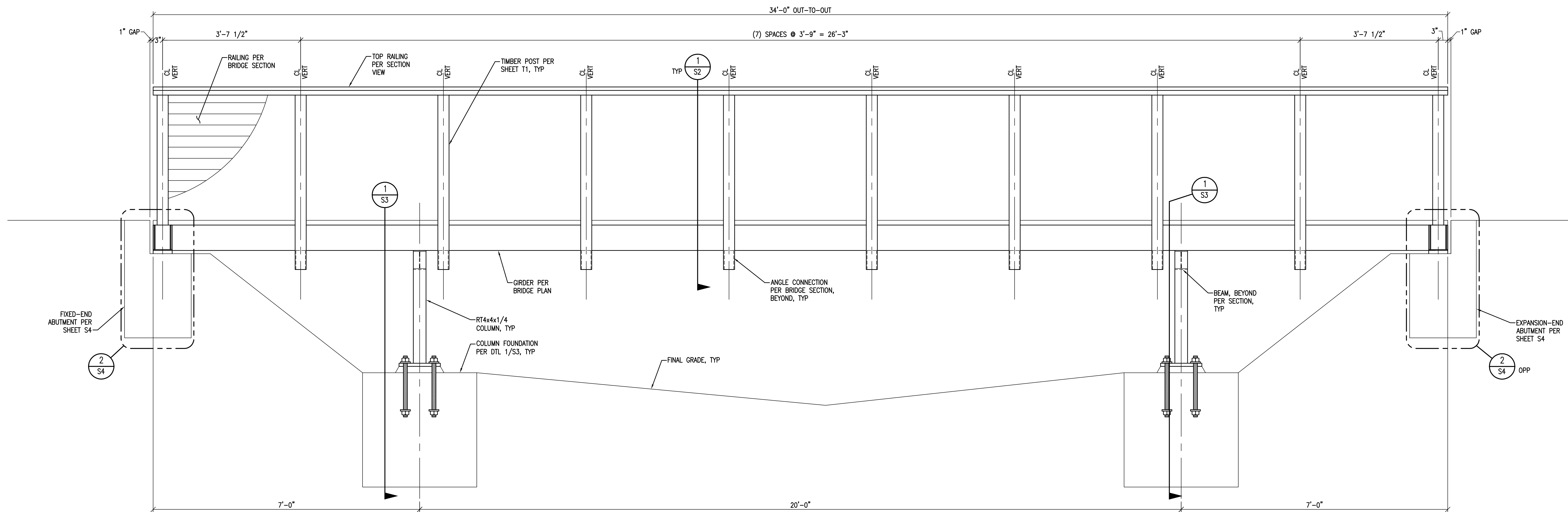


BRIDGE PLAN

3/4" = 1'-0"

NOTE: PRIOR TO FABRICATION, VERIFY THAT BRIDGE SPAN SHOWN IS COMPATIBLE WITH FINAL GRADING & OTHER SITE CONDITIONS, VECTOR STRUCTURAL ENGINEERING SHALL BE NOTIFIED OF ANY DISCREPANCIES OR INCOMPATIBILITIES PRIOR TO FABRICATION.



BRIDGE ELEVATION

3/4" = 1'-0"

REV. #	DATE	BY	ENG. MBT	CHK. ESS	DESCRIPTION

VECTOR ENGINEERS
 DRAPER, UTAH
 (801) 990-1775
 WWW.VECTORSE.COM
 OH FIRM L13902

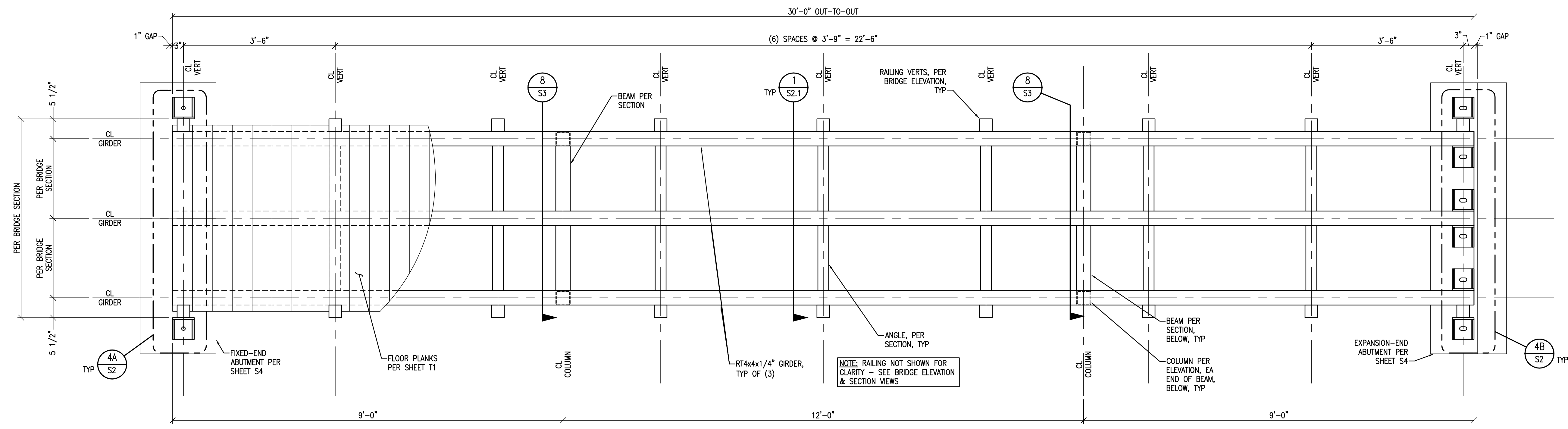
Copyright © 2024
 Vector Structural Engineering, LLC
 This drawing contains proprietary information belonging to Vector Structural Engineering, LLC, and may be neither wholly nor partially copied or reproduced without the prior written permission of Vector Structural Engineering, LLC.

GLEN HELEN ASSOCIATION
1B, 24B, 27B, AND 33B BRIDGES
 YELLOW SPRINGS, OH 45387
34' BRIDGE PLAN & ELEVATION

STATE OF OHIO
 RUSSELL N. EMERY
 PE-84657
 REGISTERED PROFESSIONAL ENGINEER
 07/22/2024
 RUSSELL N. EMERY, P.E.
 PE-84657

U6044.0002.241

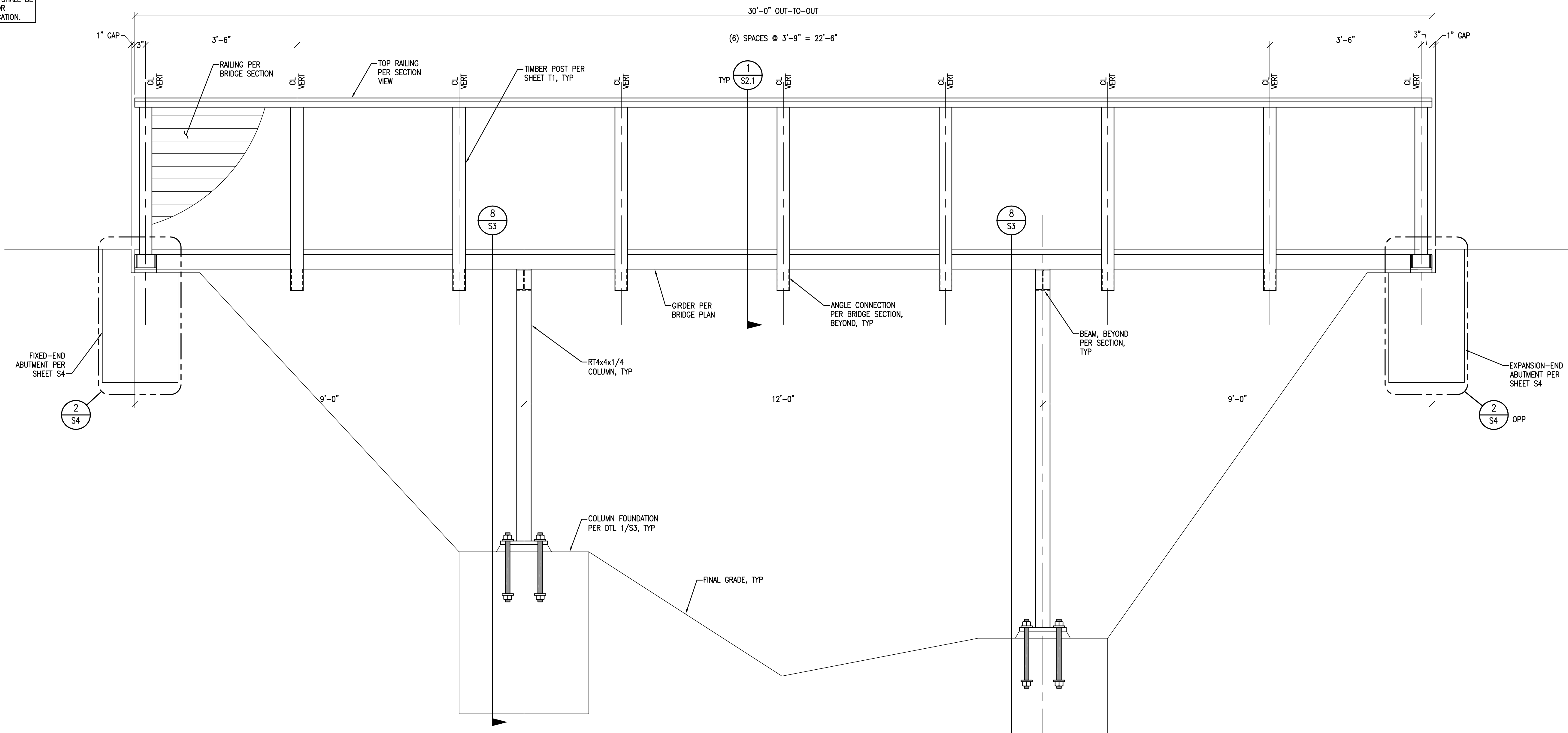
S1



BRIDGE PLAN

3/4" = 1'-0"

NOTE: PRIOR TO FABRICATION, VERIFY THAT BRIDGE SPAN SHOWN IS COMPATIBLE WITH FINAL GRADING & OTHER SITE CONDITIONS. VECTOR STRUCTURAL ENGINEERING SHALL BE NOTIFIED OF ANY DISCREPANCIES OR INCOMPATIBILITIES PRIOR TO FABRICATION.



BRIDGE ELEVATION

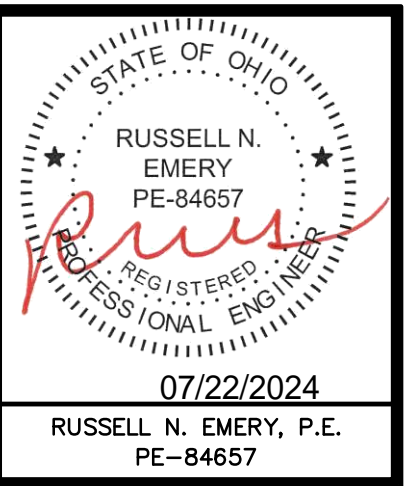
3/4" = 1'-0"

REV. #	DATE	BY	ENG. MBT	CHK. ESS	DESCRIPTION



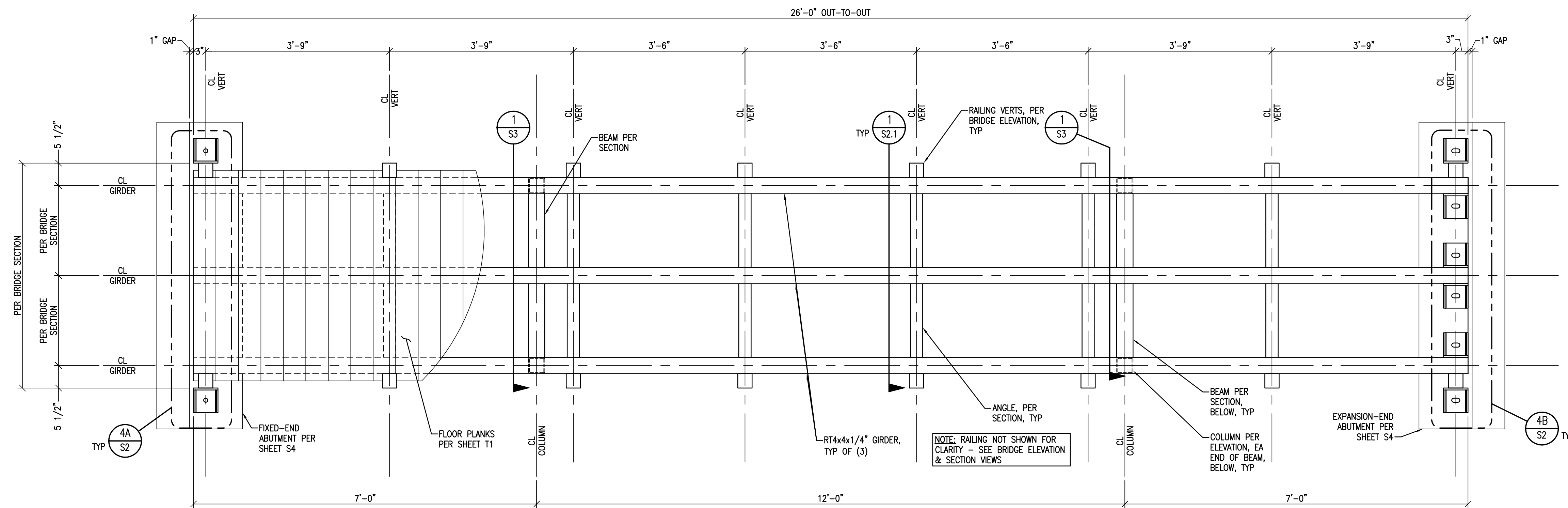
Copyright © 2024
Vector Structural Engineering, LLC
This drawing contains proprietary information belonging to Vector Structural Engineering, LLC, and may be neither wholly nor partially copied or reproduced without the prior written permission of Vector Structural Engineering, LLC.

GLEN HELEN ASSOCIATION
1B, 24B, 27B, AND 33B BRIDGES
YELLOW SPRINGS, OH 45387
30' BRIDGE PLAN & ELEVATION



U6044.0002.241

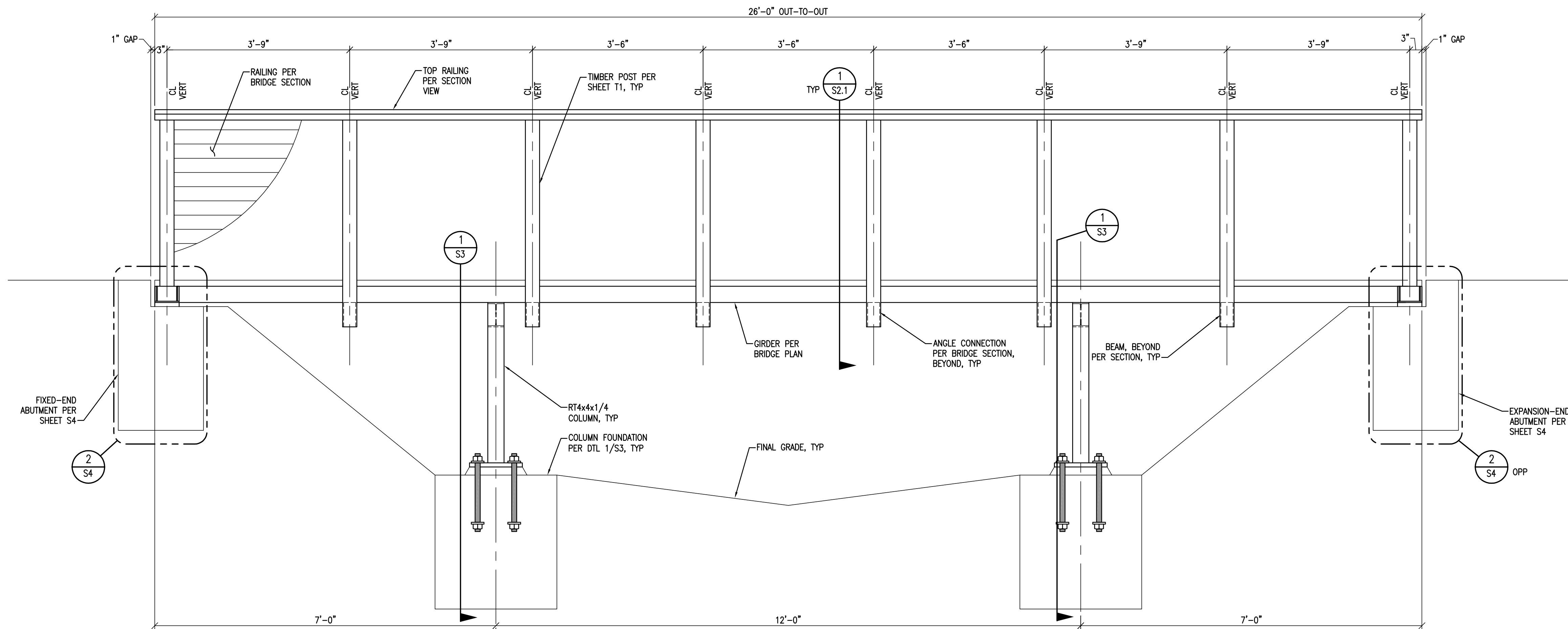
S1.1



BRIDGE PLAN

3/4" = 1'-0"

NOTE: PRIOR TO FABRICATION, VERIFY THAT BRIDGE SPAN SHOWN IS COMPATIBLE WITH FINAL GRADING & OTHER SITE CONDITIONS. VECTOR STRUCTURAL ENGINEERING SHALL BE NOTIFIED OF ANY DISCREPANCIES OR INCOMPATIBILITIES PRIOR TO FABRICATION.



BRIDGE ELEVATION

3/4" = 1'-0"

REV. #	DATE	BY	ENG. M.B.T.	CHK. ESS	DESCRIPTION

VECTOR ENGINEERS
 DRAPER, UTAH
 (801) 990-1775
 WWW.VECTORENGINEERS.COM
 OH FIRM LICENSE NUMBER 13902

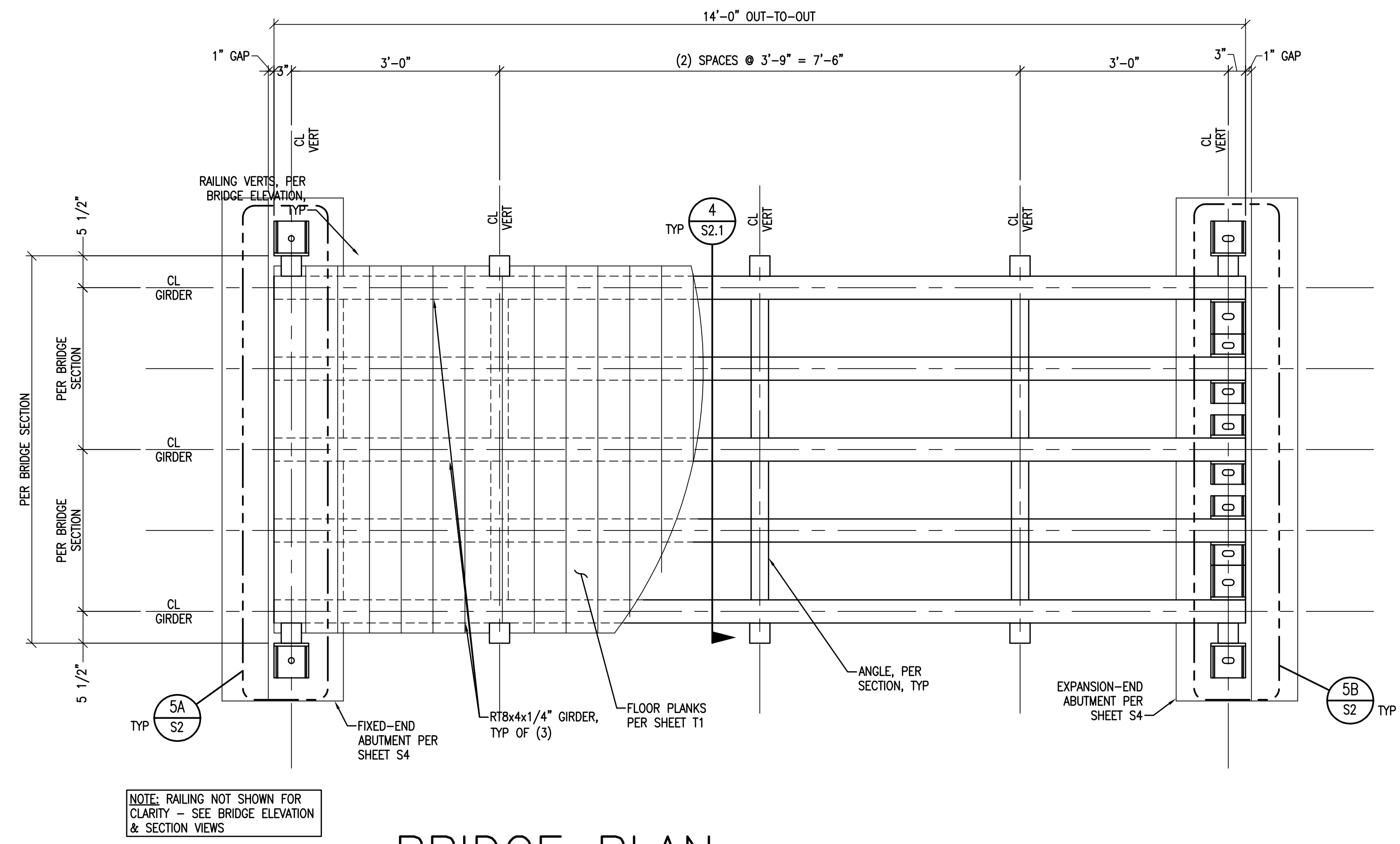
Copyright © 2024
 Vector Structural Engineering, LLC
 This drawing contains proprietary information belonging to Vector Structural Engineering, LLC, and may be neither wholly nor partially copied or reproduced without the prior written permission of Vector Structural Engineering, LLC.

GLEN HELEN ASSOCIATION
1B, 24B, 27B, AND 33B BRIDGES
 YELLOW SPRINGS, OH 45387
26' BRIDGE PLAN & ELEVATION

STATE OF OHIO
 RUSSELL N. EMERY
 PE-84657
 REGISTERED PROFESSIONAL ENGINEER
 07/22/2024
 RUSSELL N. EMERY, P.E.
 PE-84657

U6044.0002.241

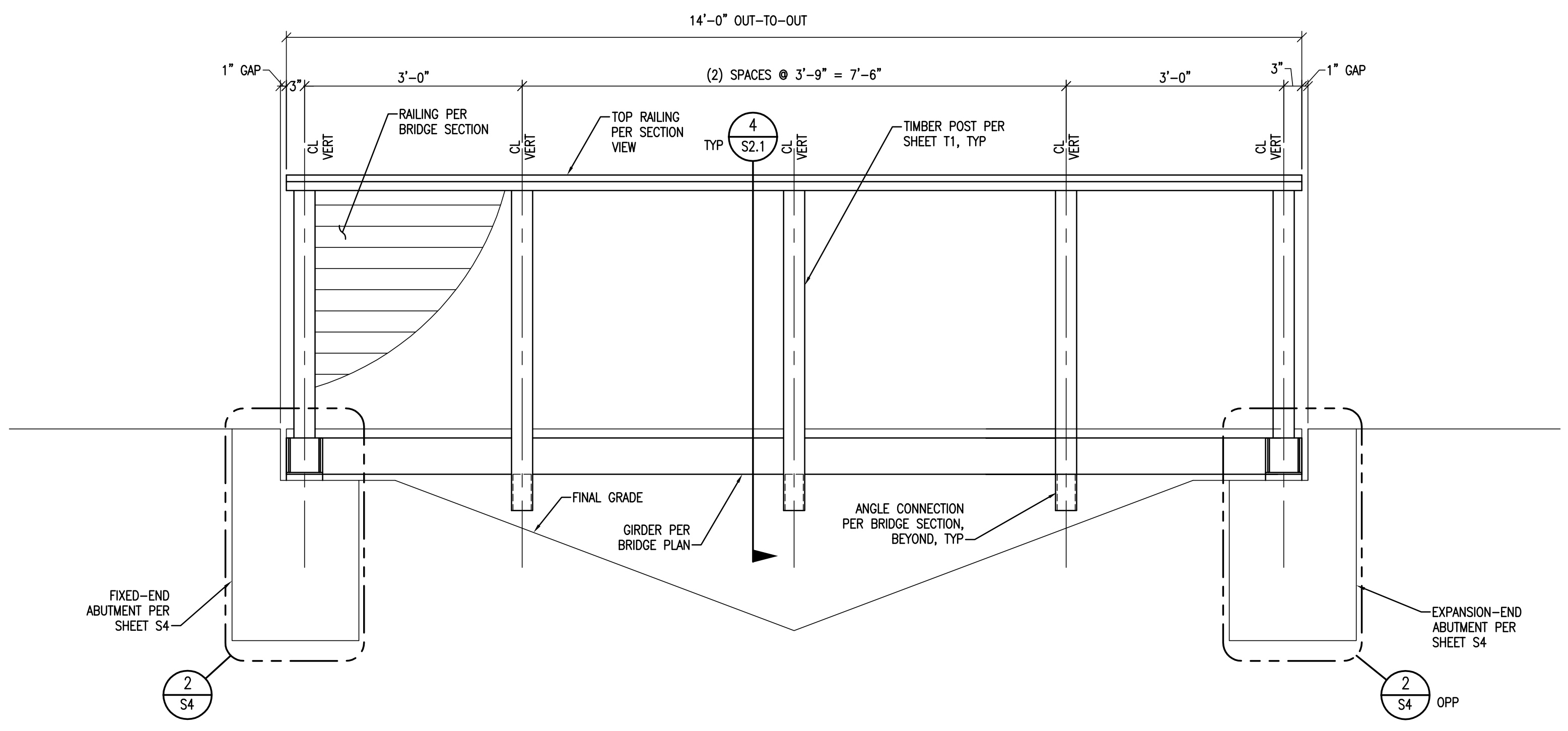
S1.2



BRIDGE PLAN

3/4" = 1'-0"

NOTE: PRIOR TO FABRICATION, VERIFY THAT BRIDGE SPAN SHOWN IS COMPATIBLE WITH FINAL GRADING & OTHER SITE CONDITIONS. VECTOR STRUCTURAL ENGINEERING SHALL BE NOTIFIED OF ANY DISCREPANCIES OR INCOMPATIBILITIES PRIOR TO FABRICATION.



BRIDGE ELEVATION

3/4" = 1'-0"

REV. #	DATE	BY	ENG. MBT	DWN. DNF	CHK. ESS

VECTOR ENGINEERS
 DRAPER, UTAH
 (801) 990-1775
 WWW.VECTORSE.COM
 OH FIRM LICENSE NUMBER 13992

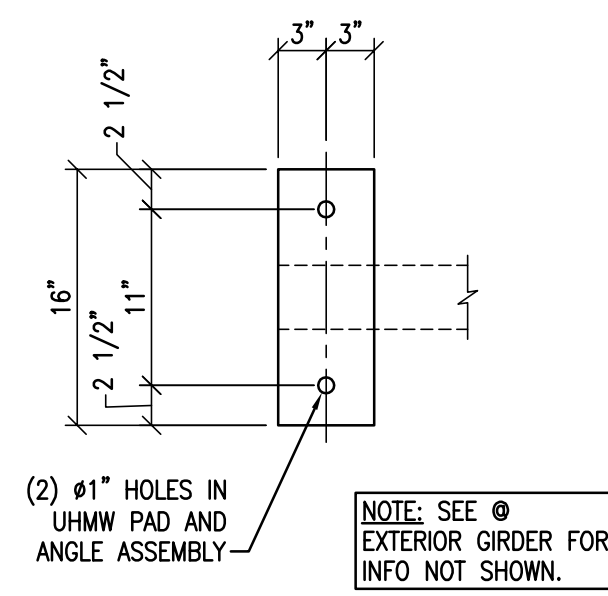
Copyright © 2024
 Vector Structural Engineering, LLC
 This drawing contains proprietary information belonging to Vector Structural Engineering, LLC, and may be neither wholly nor partially copied or reproduced without the prior written permission of Vector Structural Engineering, LLC.

GLEN HELEN ASSOCIATION
1B, 24B, 27B, AND 33B BRIDGES
 YELLOW SPRINGS, OH 45387
14' BRIDGE PLAN & ELEVATION

STATE OF OHIO
 RUSSELL N. EMERY
 PE-84657
 REGISTERED PROFESSIONAL ENGINEER
 07/22/2024
 RUSSELL N. EMERY, P.E.
 PE-84657

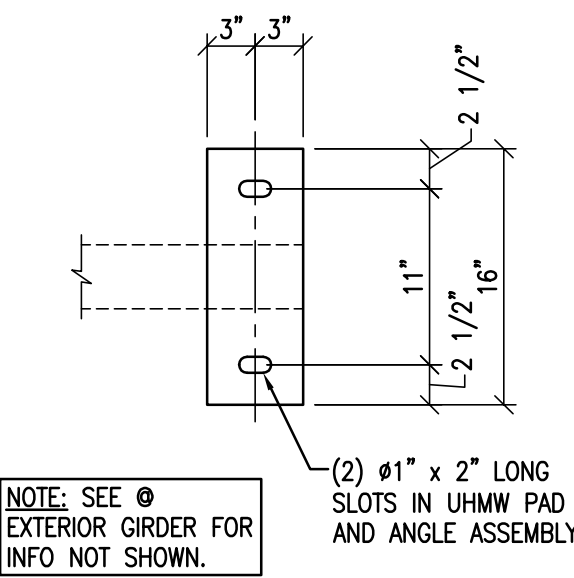
U6044.0002.241

S1.3



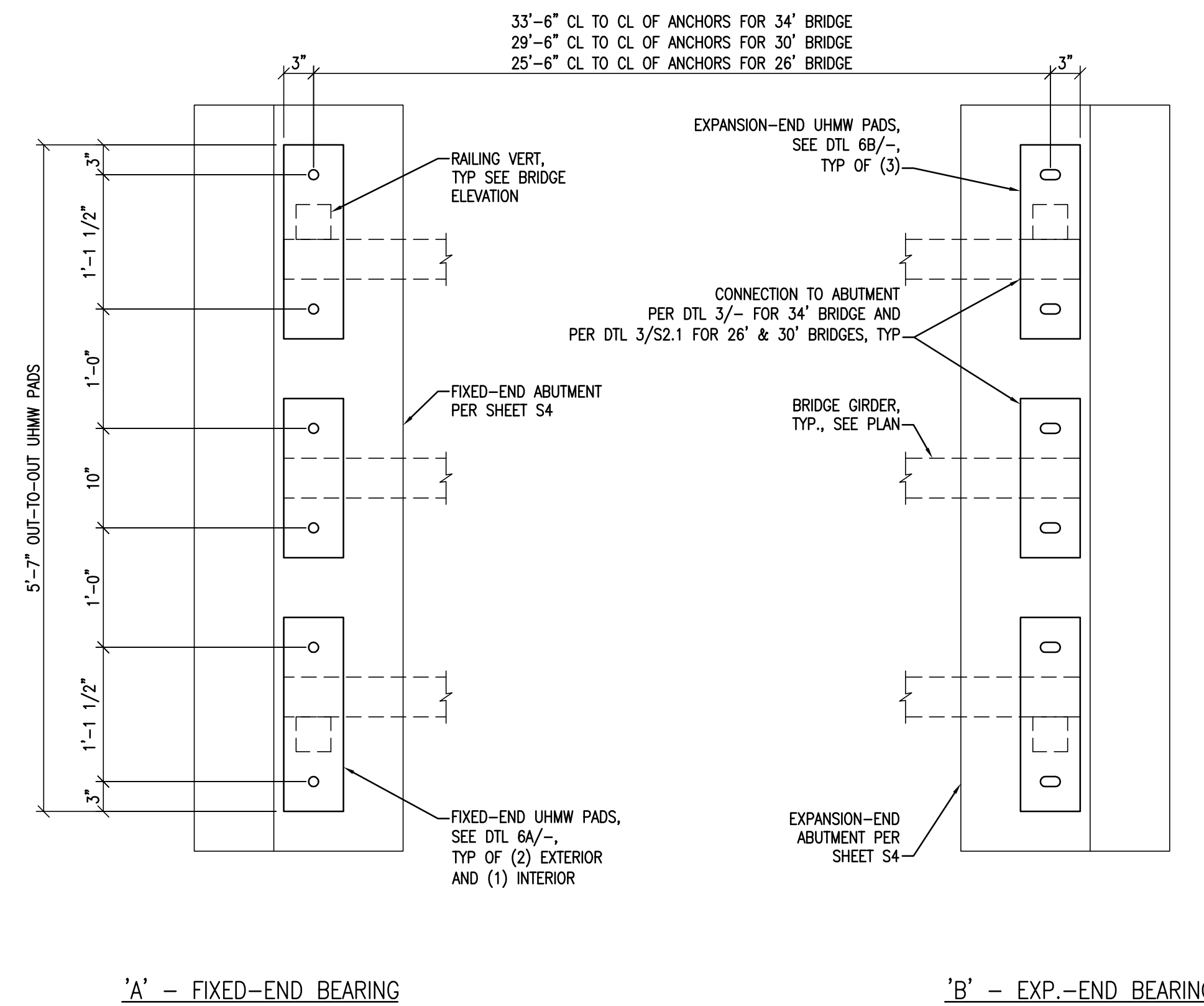
INTERIOR GIRDER FOR 14' BRIDGE

'A' - FIXED-END FOR 14' BRIDGE



INTERIOR GIRDER FOR 14' BRIDGE

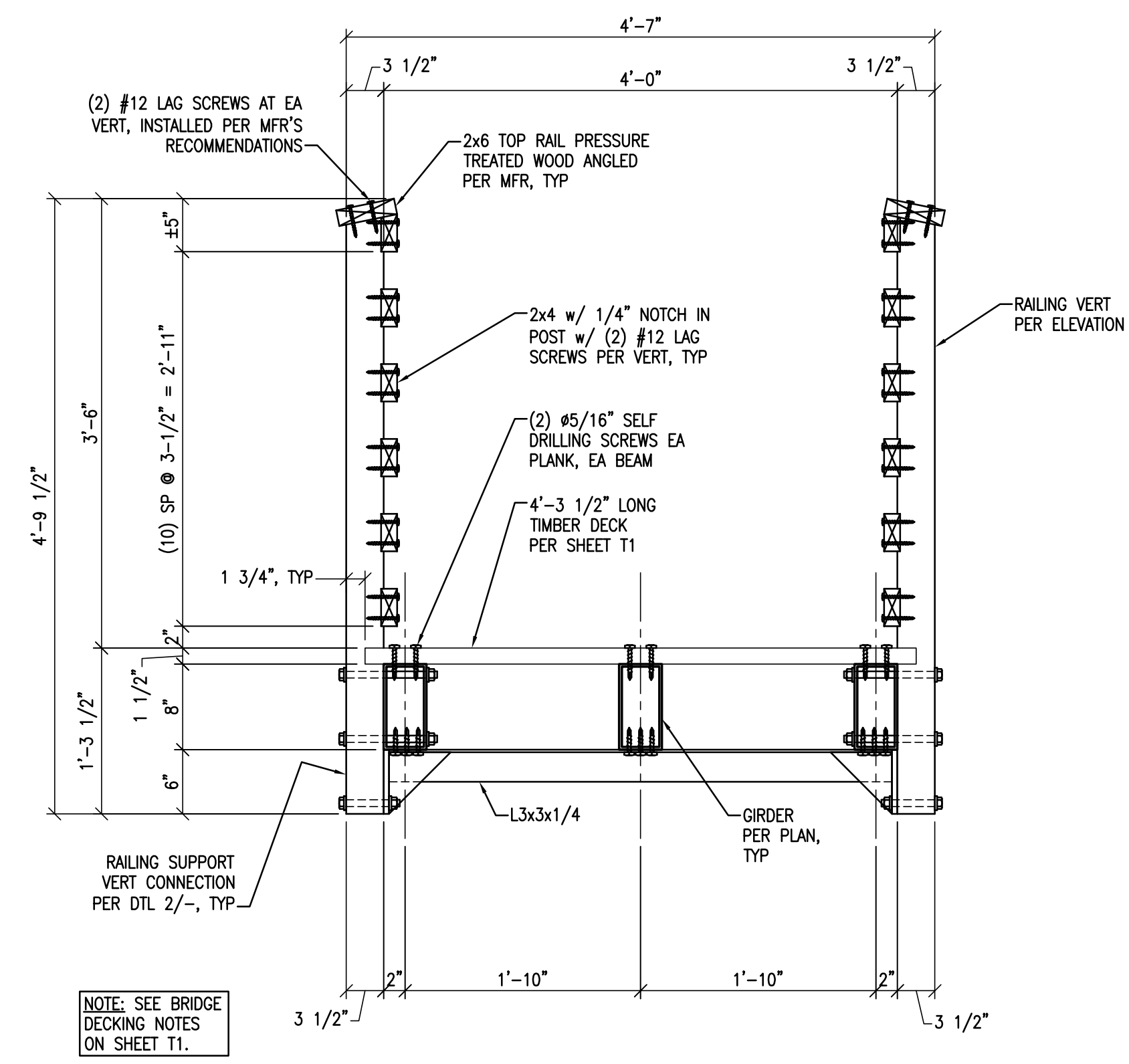
'B' - EXP.-END FOR 14' BRIDGE



ANCHOR BOLT LAYOUT PLAN

N.T.S.

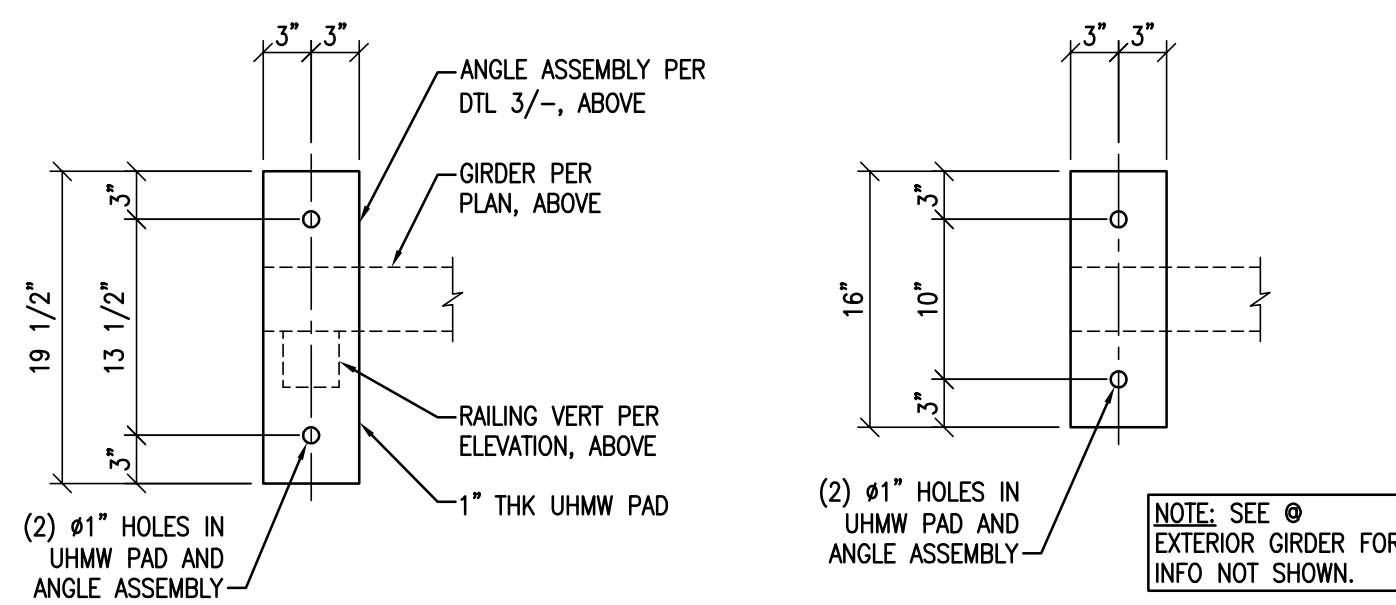
4



34' BRIDGE BRIDGE SECTION

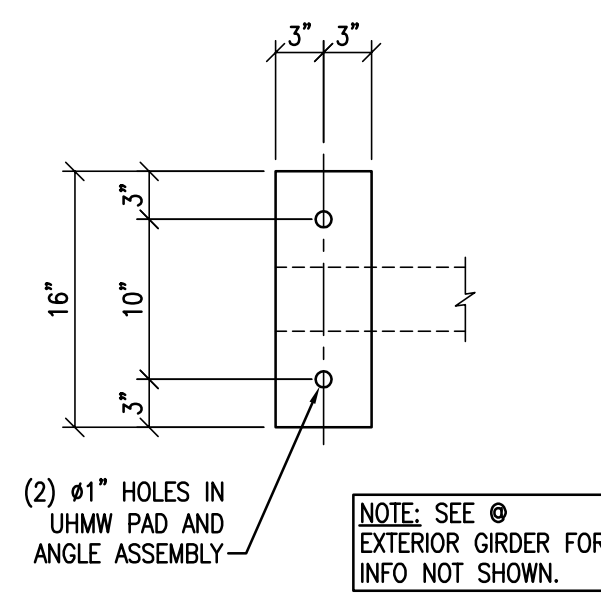
1" = 1'-0"

1

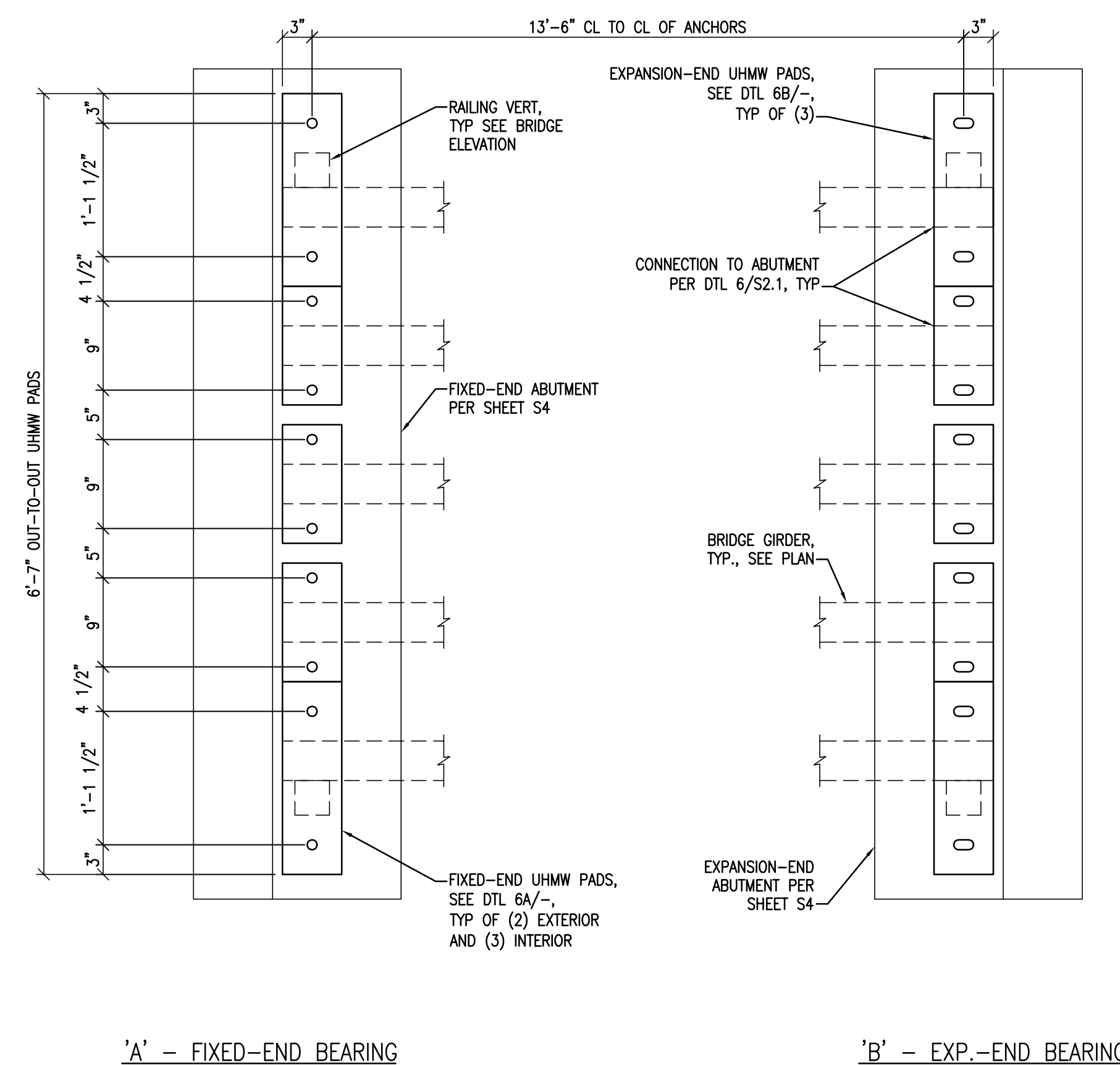


EXTERIOR GIRDER

'A' - FIXED-END



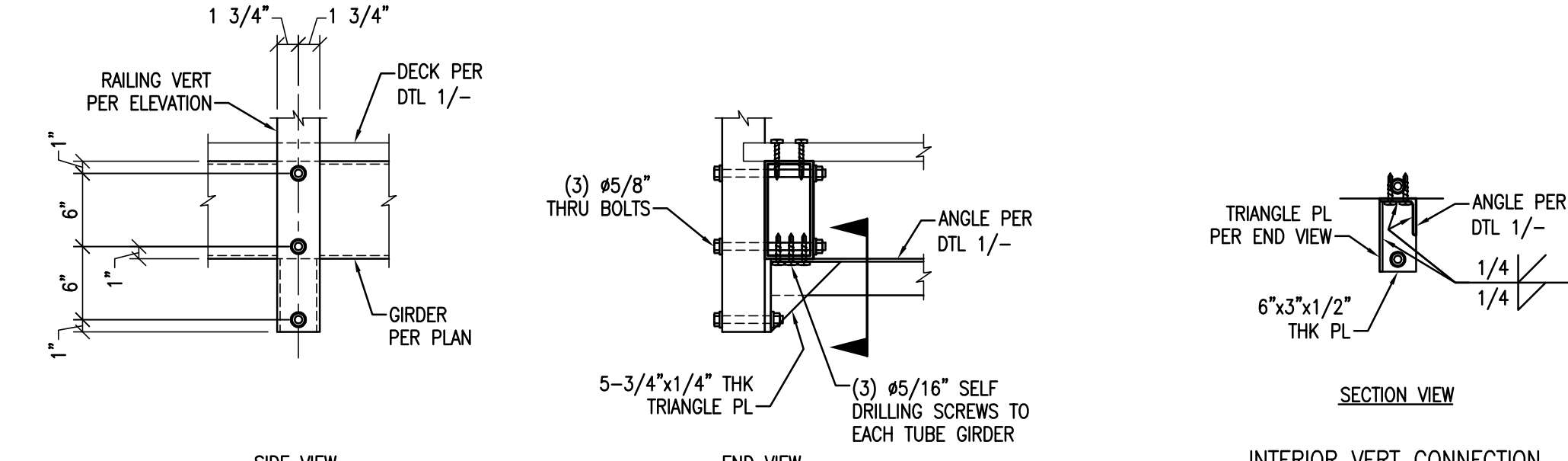
INTERIOR GIRDER



14' BRIDGE ANCHOR BOLT LAYOUT PLAN

N.T.S.

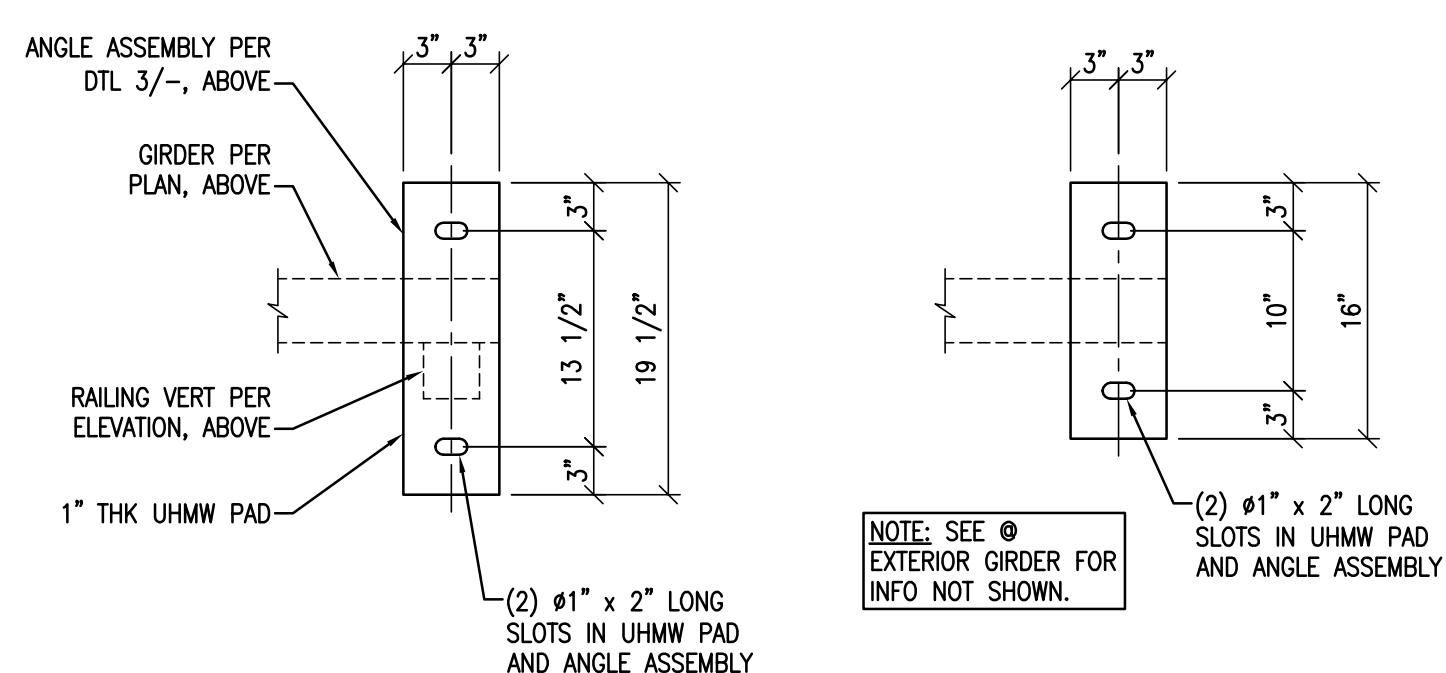
5



34' BRIDGE ANGLE AND POST CONNECTION

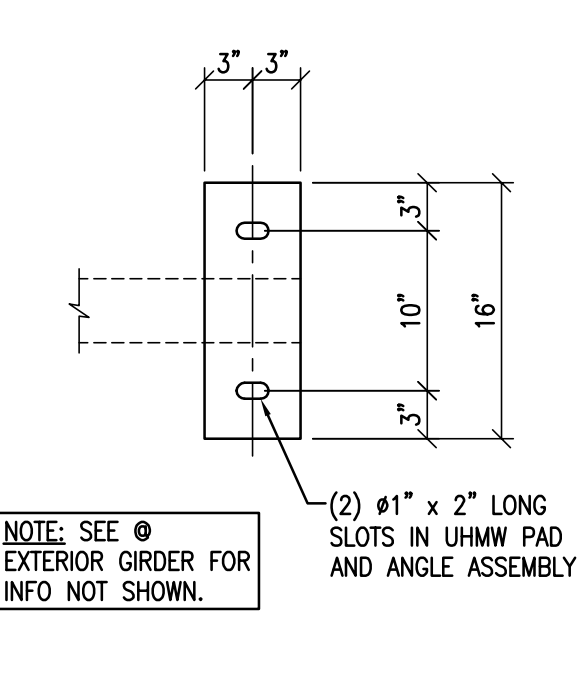
N.T.S.

2

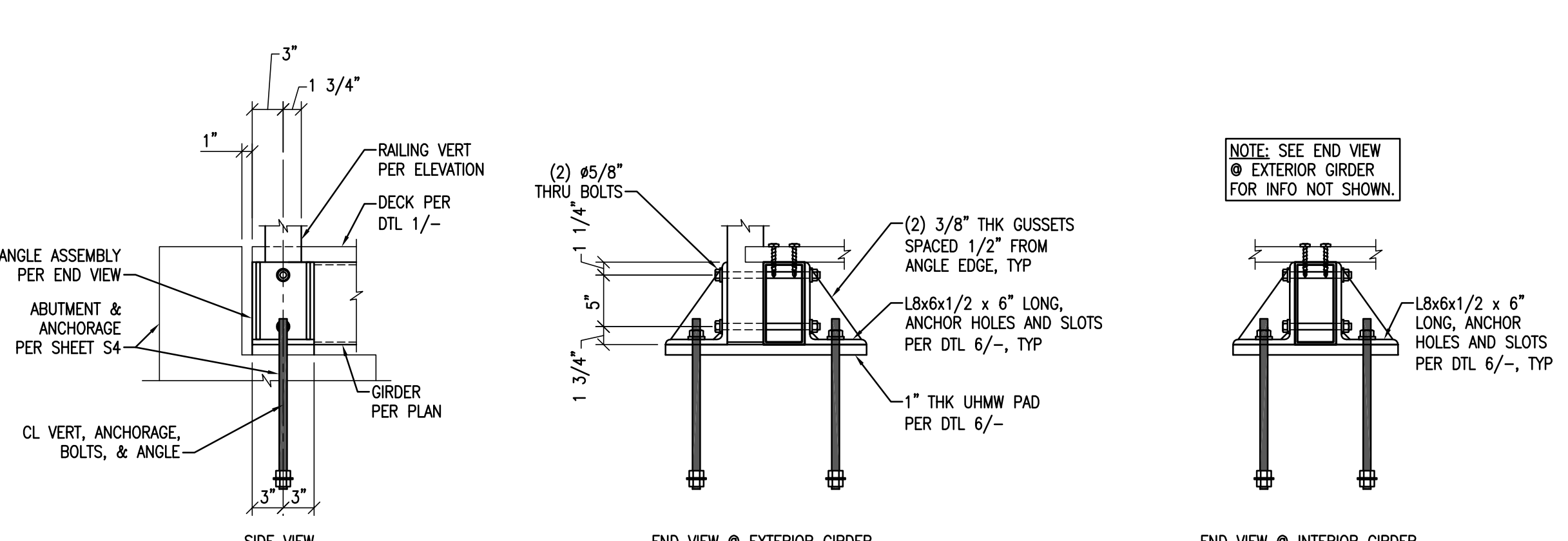


EXTERIOR GIRDER

'B' - EXP.-END



INTERIOR GIRDER



END VERT CONNECTION

34' BRIDGE GIRT (2) AND POST CONNECTION TO ABUTMENT

N.T.S.

3

DATE: 07-22-2024	CHK: ESS
REV. #	DESCRIPTION

VECTOR ENGINEERS
 DRAPER, UTAH
 (801) 990-1275
 WWW.VECTORENGINEERS.COM
 OH FIRM LICENSE NUMBER 13592

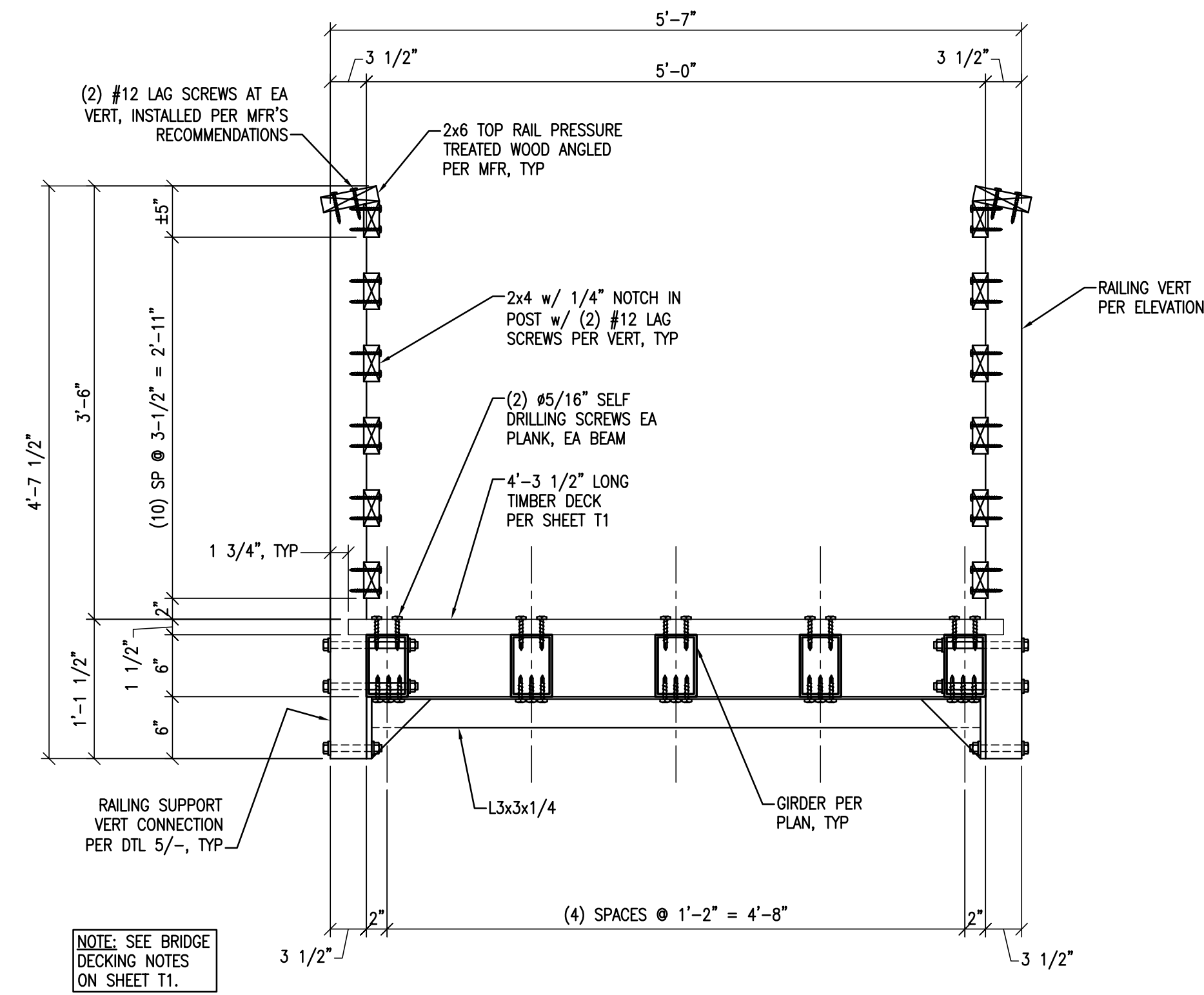
Copyright © 2024
 Vector Structural Engineering, LLC
 This drawing contains proprietary information belonging to Vector Structural Engineering, LLC, and may be neither wholly nor partially copied or reproduced without the prior written permission of Vector Structural Engineering, LLC.

GLEN HELEN ASSOCIATION
1B, 24B, 27B, AND 33B BRIDGES
YELLOW SPRINGS, OH 45387
STRUCTURAL DETAILS

STATE OF OHIO
 RUSSELL N. EMERY
 PE-84657
 REGISTERED PROFESSIONAL ENGINEER
 07/22/2024
 RUSSELL N. EMERY, P.E.
 PE-84657

U6044.0002.241

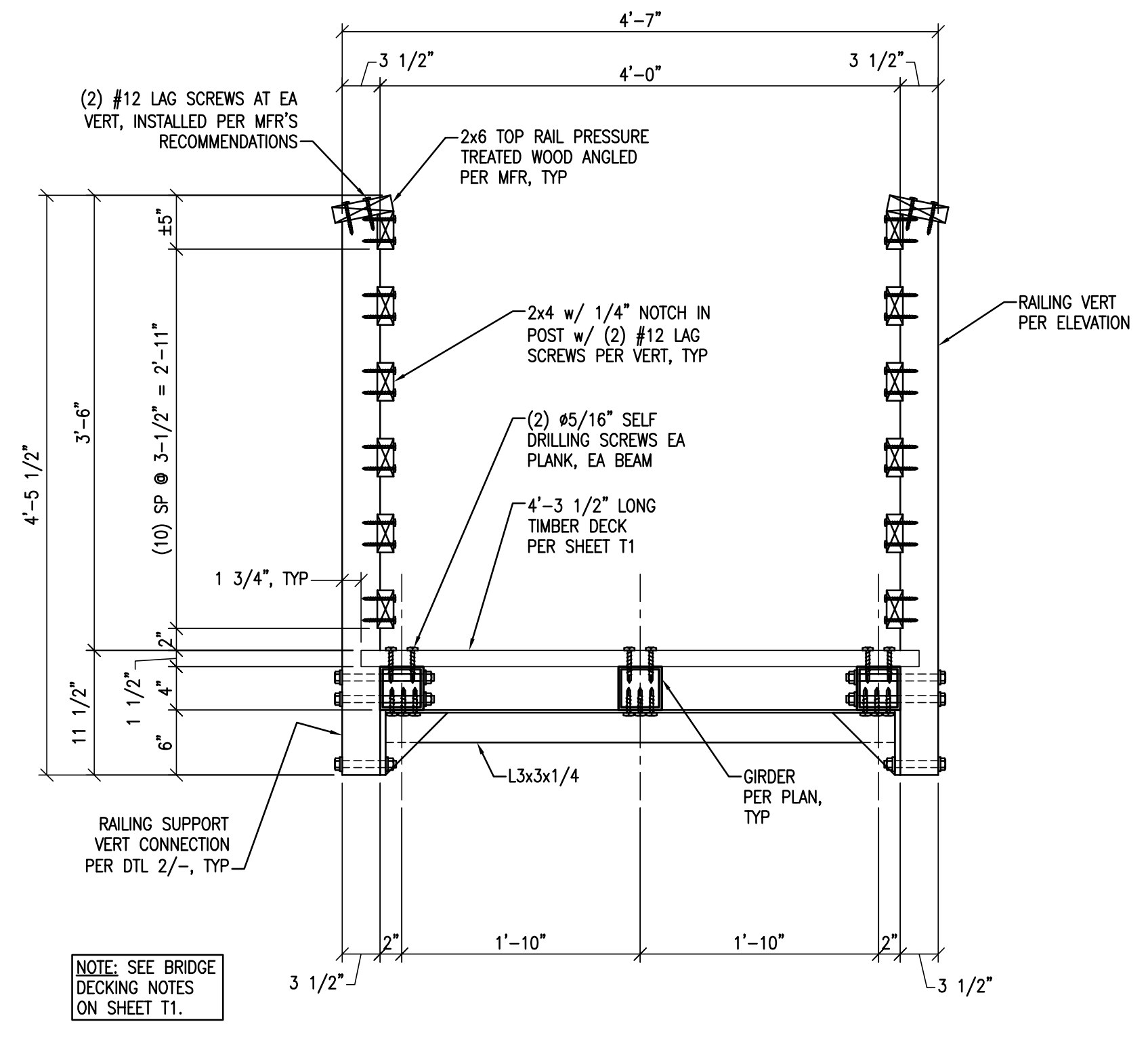
S2



14' BRIDGE SECTION

N.T.S.

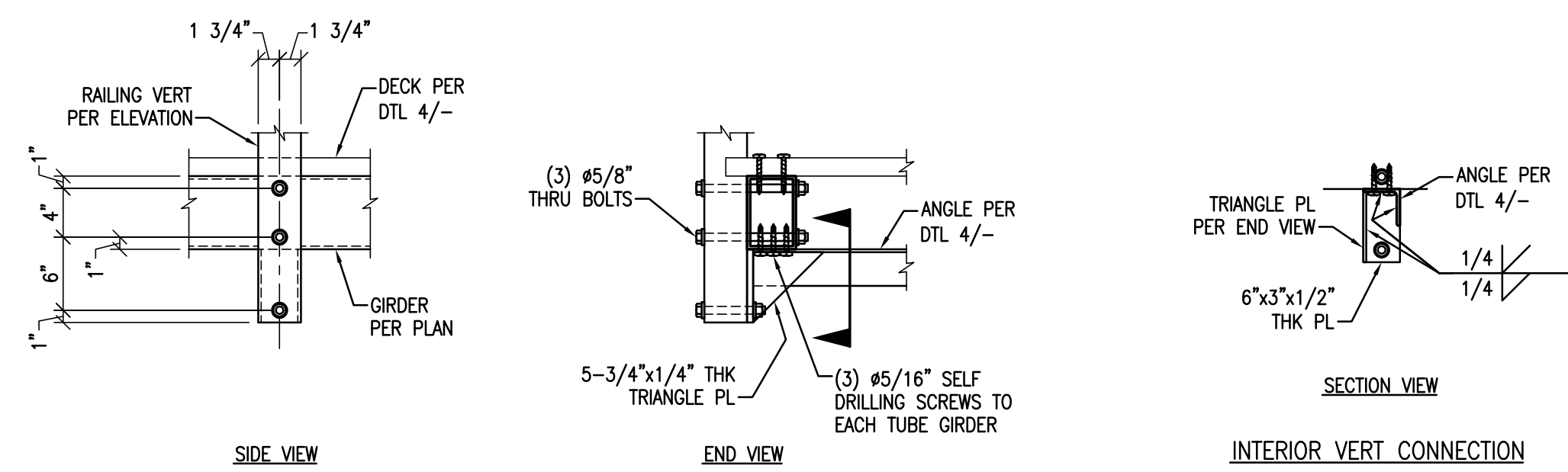
4



30' & 26' BRIDGE SECTION

N.T.S.

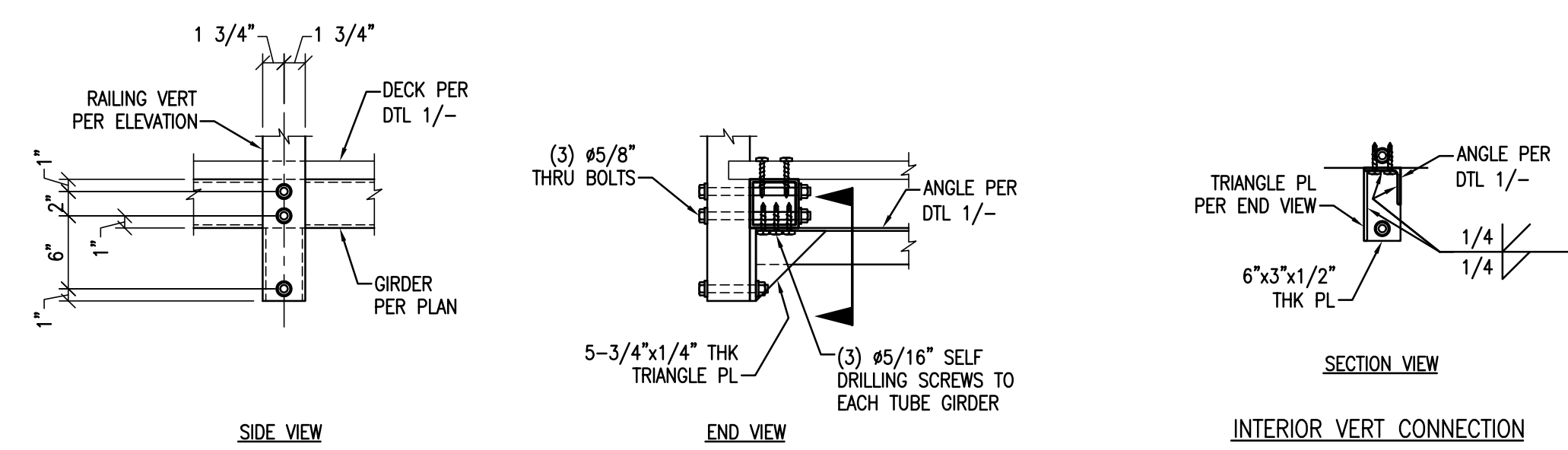
1



ANGLE AND POST CONNECTION

N.T.S.

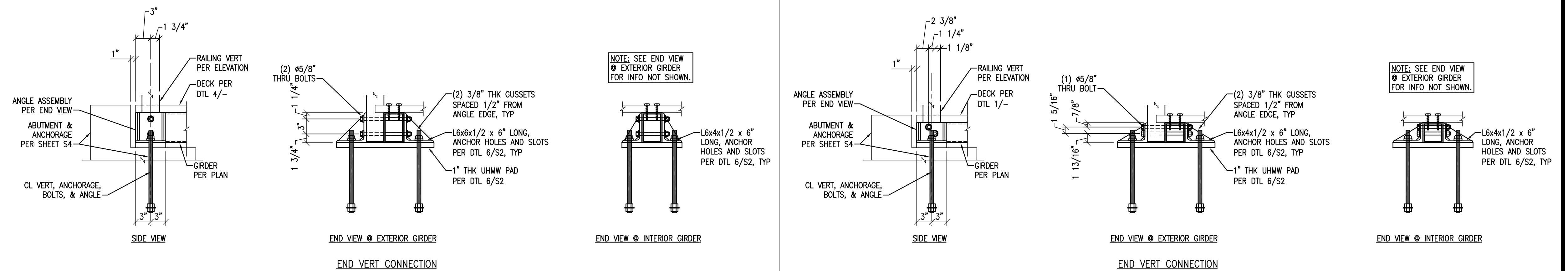
5



ANGLE AND POST CONNECTION

N.T.S.

2



GIRTD AND POST CONNECTION TO ABUTMENT

N.T.S.

6

GIRTD AND POST CONNECTION TO ABUTMENT

N.T.S.

3

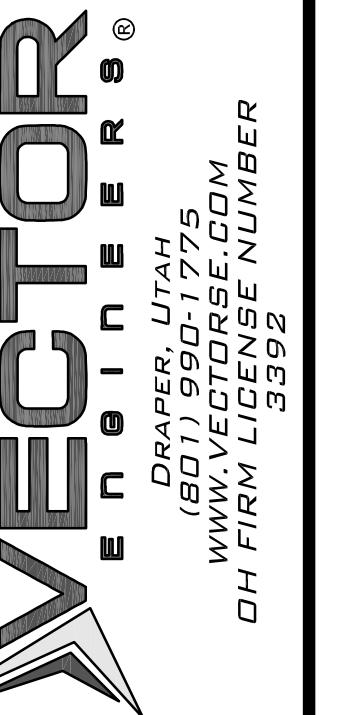
GLEN HELEN ASSOCIATION
1B, 24B, 27B, AND 33B BRIDGES
 YELLOW SPRINGS, OH 45387
STRUCTURAL DETAILS



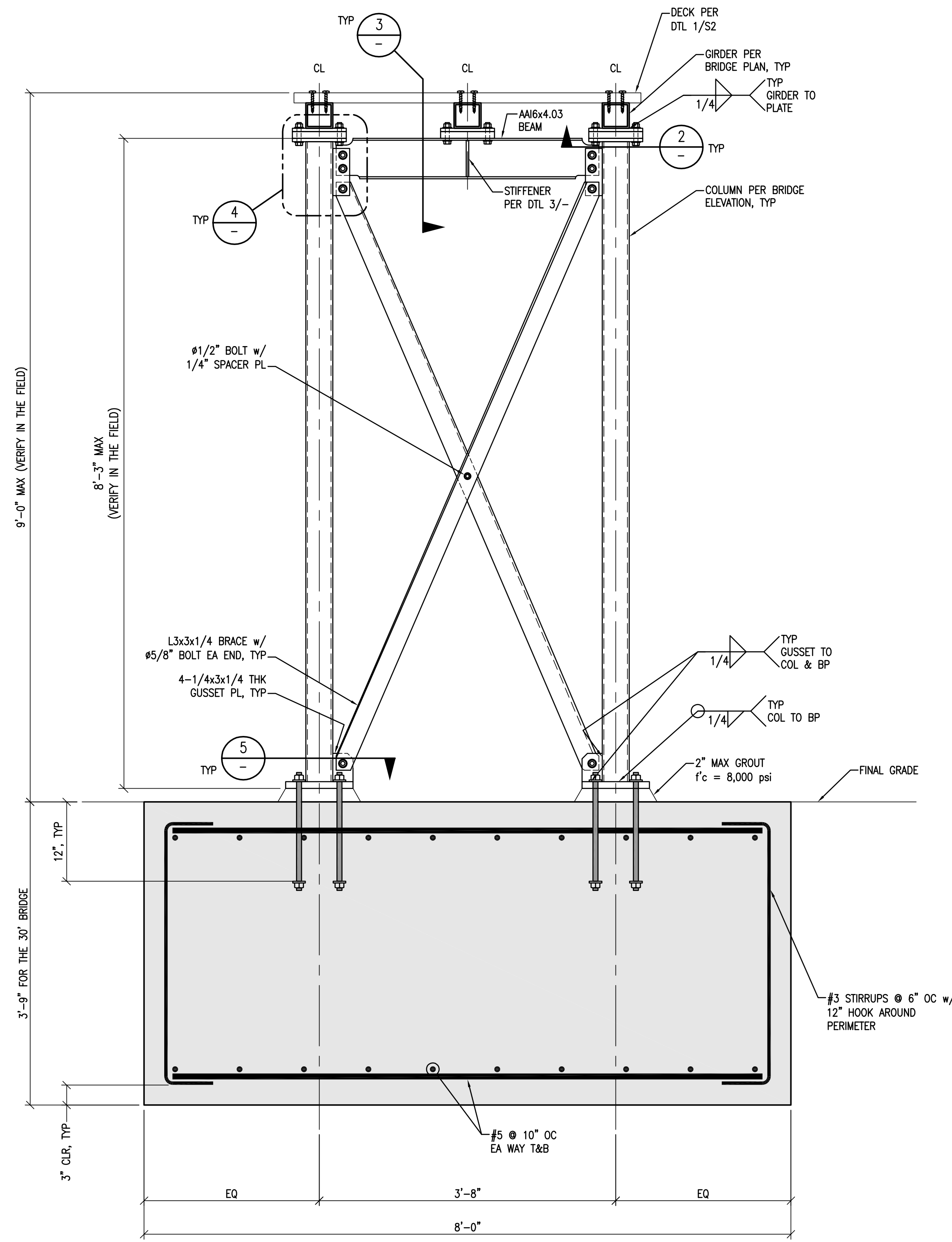
U6044.0002.241

S2.1

REV. #	DATE	BY	ENG. MBT	CHK. ESS



Copyright © 2024
 Vector Structural Engineering, LLC
 This drawing contains proprietary information
 belonging to Vector Structural Engineering, LLC,
 and may be neither wholly nor partially copied or
 reproduced without the prior written permission of
 Vector Structural Engineering, LLC.



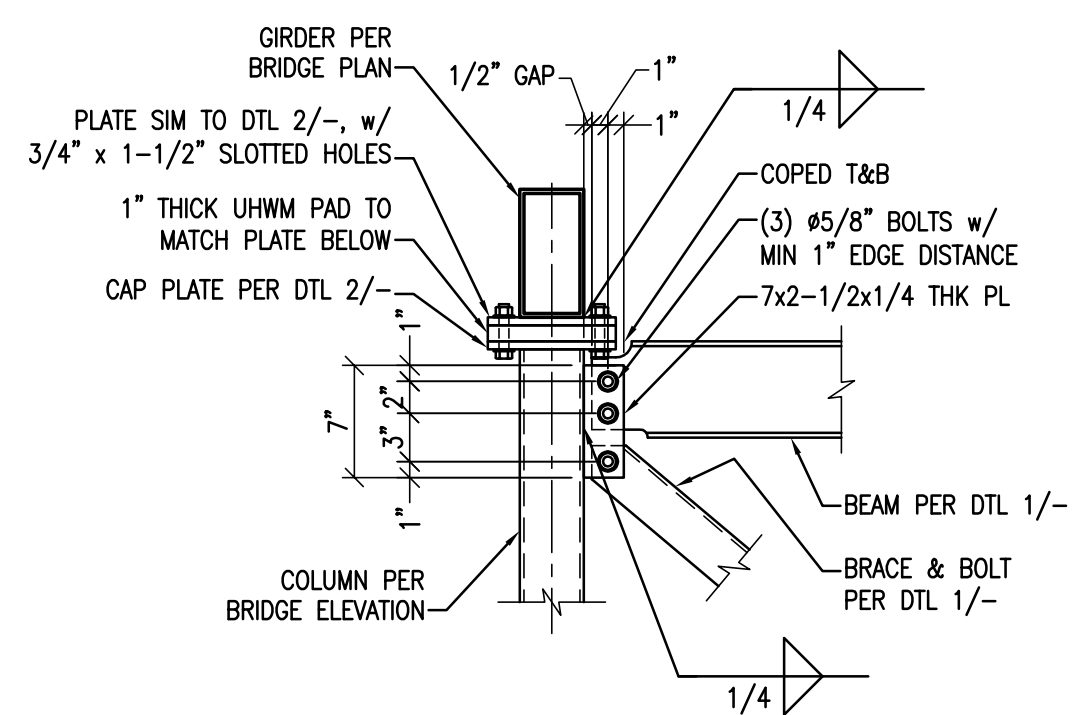
NOTE: PRIOR TO FABRICATION, VERIFY THAT COLUMN DESIGN SHOWN IS COMPATIBLE WITH FINAL GRADING & OTHER SITE CONDITIONS. VECTOR STRUCTURAL ENGINEERING SHALL BE NOTIFIED OF ANY DISCREPANCIES OR INCOMPATIBILITIES PRIOR TO FABRICATION.

NOTES:
-NUTS AND WASHER CAN BE USED UNDER THE COLUMN BASE PLATES TO LIFT AND POSITION THEM. GROUT FILL AROUND THE BASE PER SPECIFICATION.
-OPTIONAL #1/2\"/>

COLUMN SECTION FOR 30' BRIDGE

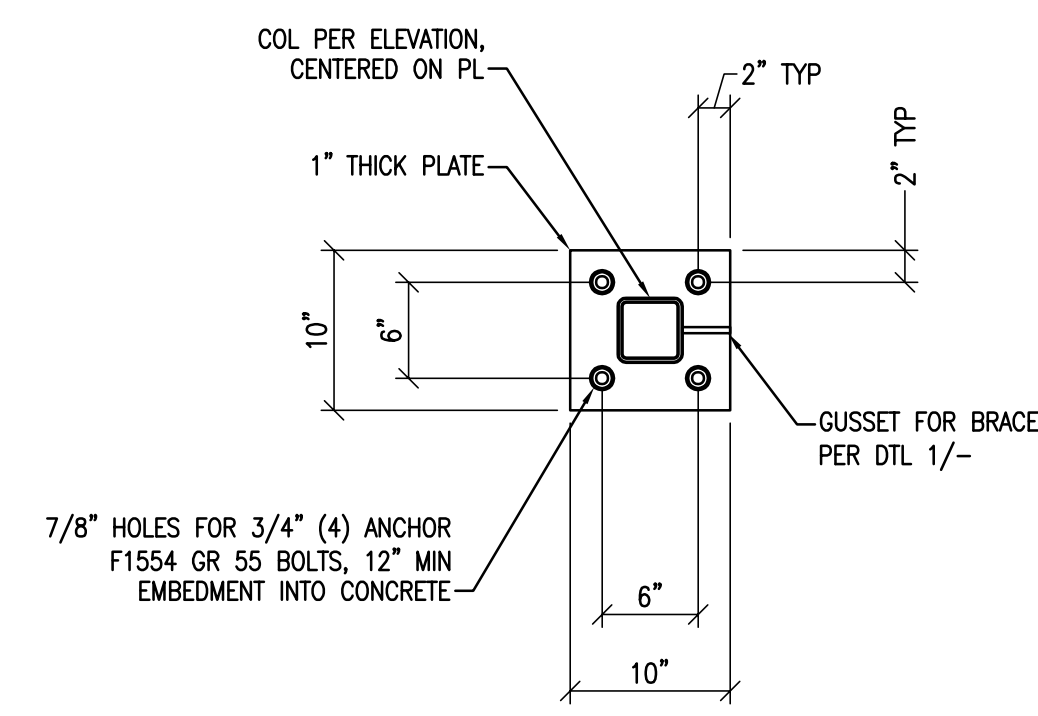
1" = 1'-0"

8



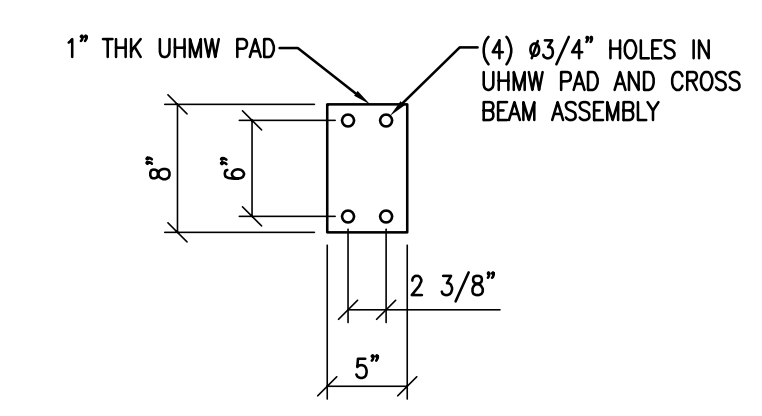
NTS

4



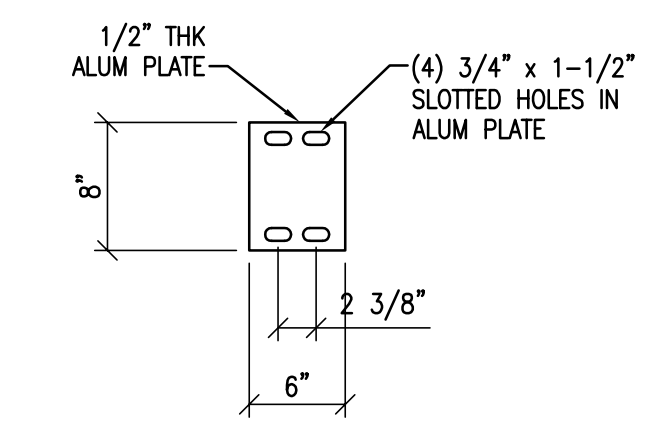
NTS

5



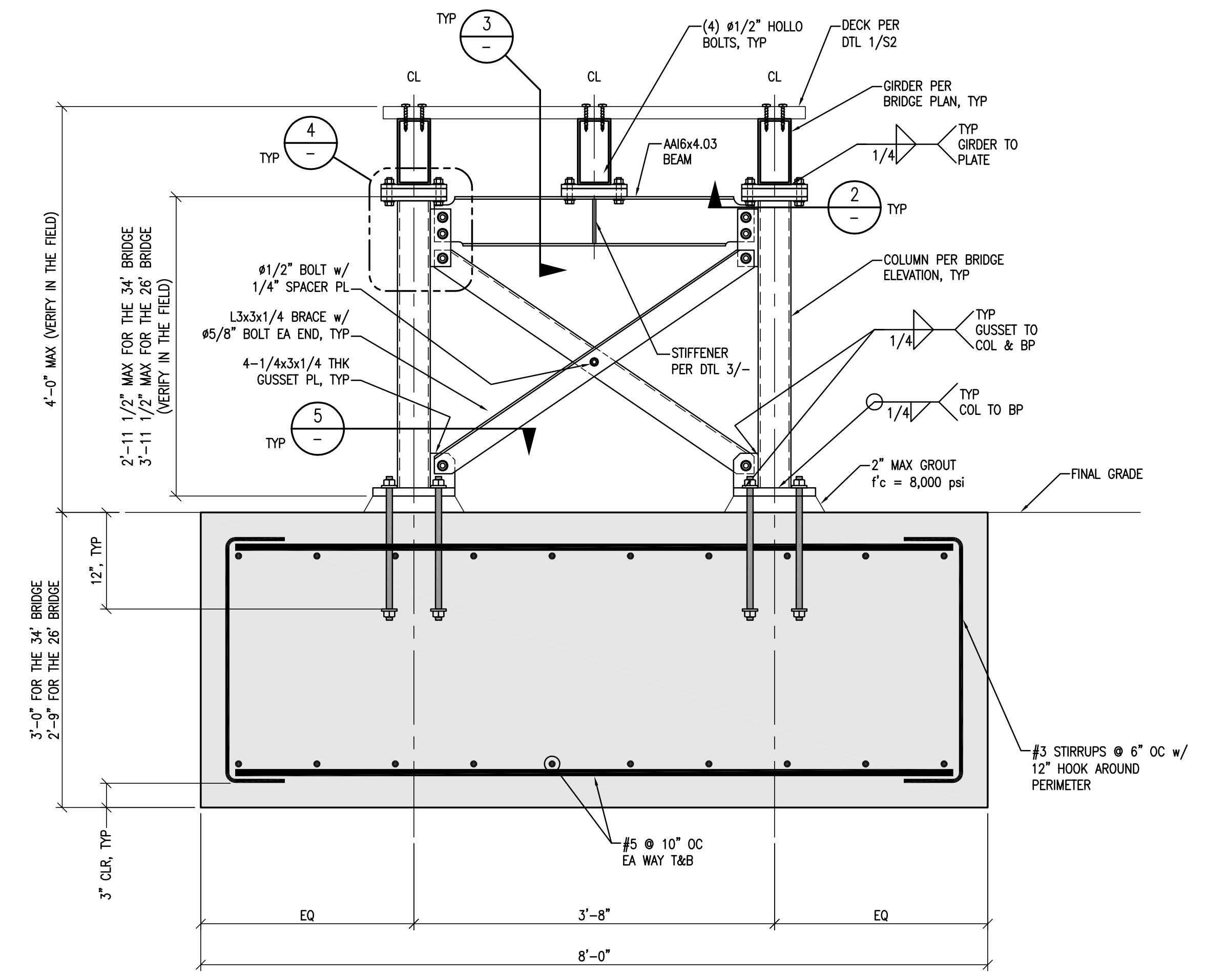
NTS

6



NTS

7



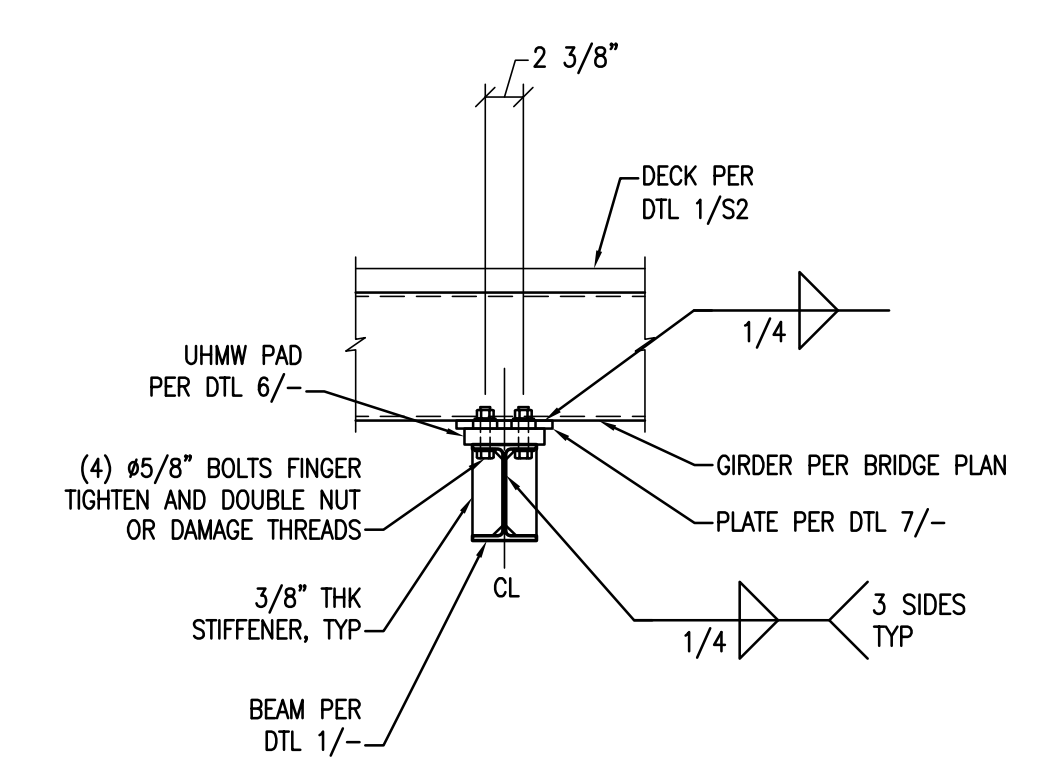
NOTE: PRIOR TO FABRICATION, VERIFY THAT COLUMN DESIGN SHOWN IS COMPATIBLE WITH FINAL GRADING & OTHER SITE CONDITIONS. VECTOR STRUCTURAL ENGINEERING SHALL BE NOTIFIED OF ANY DISCREPANCIES OR INCOMPATIBILITIES PRIOR TO FABRICATION.

NOTES:
-NUTS AND WASHER CAN BE USED UNDER THE COLUMN BASE PLATES TO LIFT AND POSITION THEM. GROUT FILL AROUND THE BASE PER SPECIFICATION.
-OPTIONAL #1/2\"/>

COLUMN SECTION FOR 34' & 26' BRIDGE

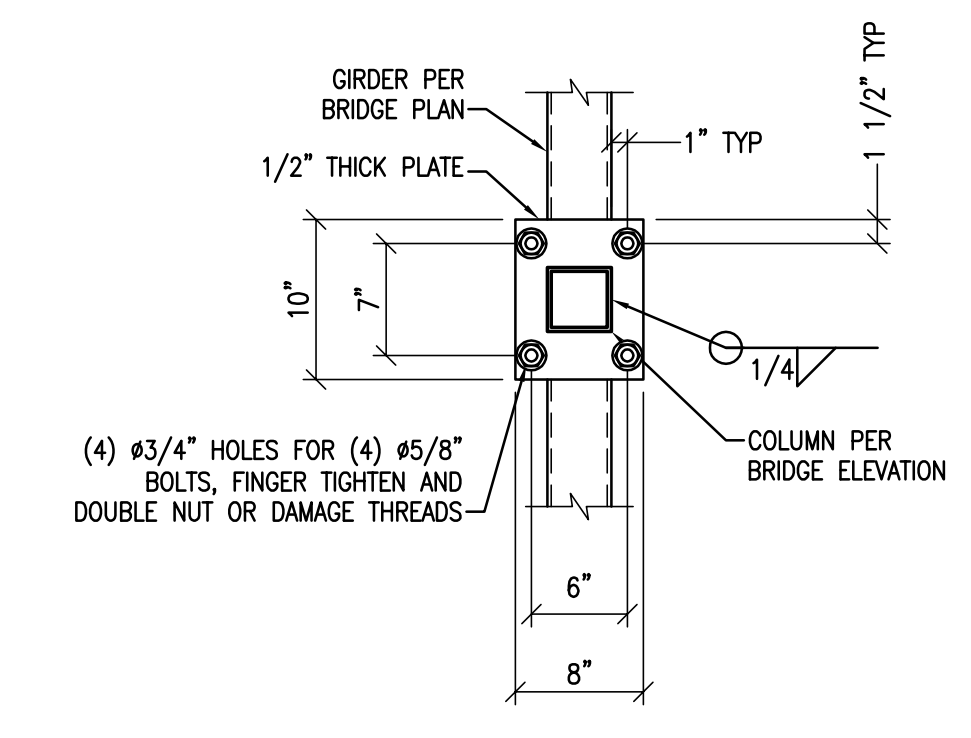
1" = 1'-0"

1



NTS

3



NTS

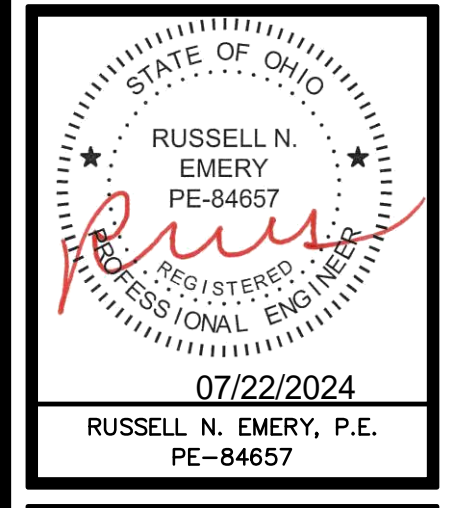
2

REV. #	DATE	BY:	ENG.MBT	CHK.ESS	DESCRIPTION



Copyright © 2024
Vector Structural Engineering, LLC
This drawing contains proprietary information belonging to Vector Structural Engineering, LLC, and may be neither wholly nor partially copied or reproduced without the prior written permission of Vector Structural Engineering, LLC.

GLEN HELEN ASSOCIATION
1B, 24B, 27B, AND 33B BRIDGES
YELLOW SPRINGS, OH 45387
STRUCTURAL DETAILS



U6044.0002.241

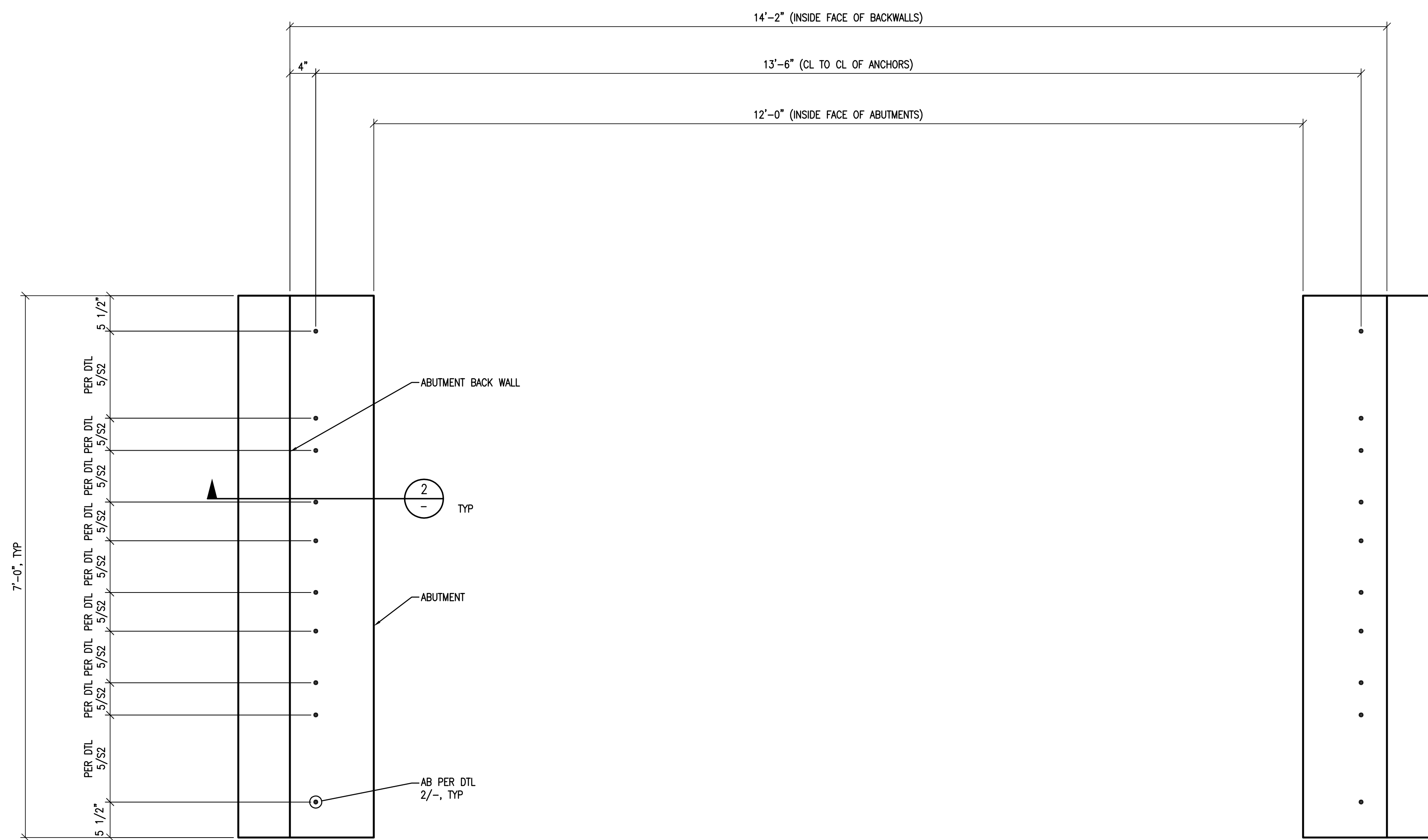
S3



34' BRIDGE ABUTMENT PLAN VIEW

N.T.S.

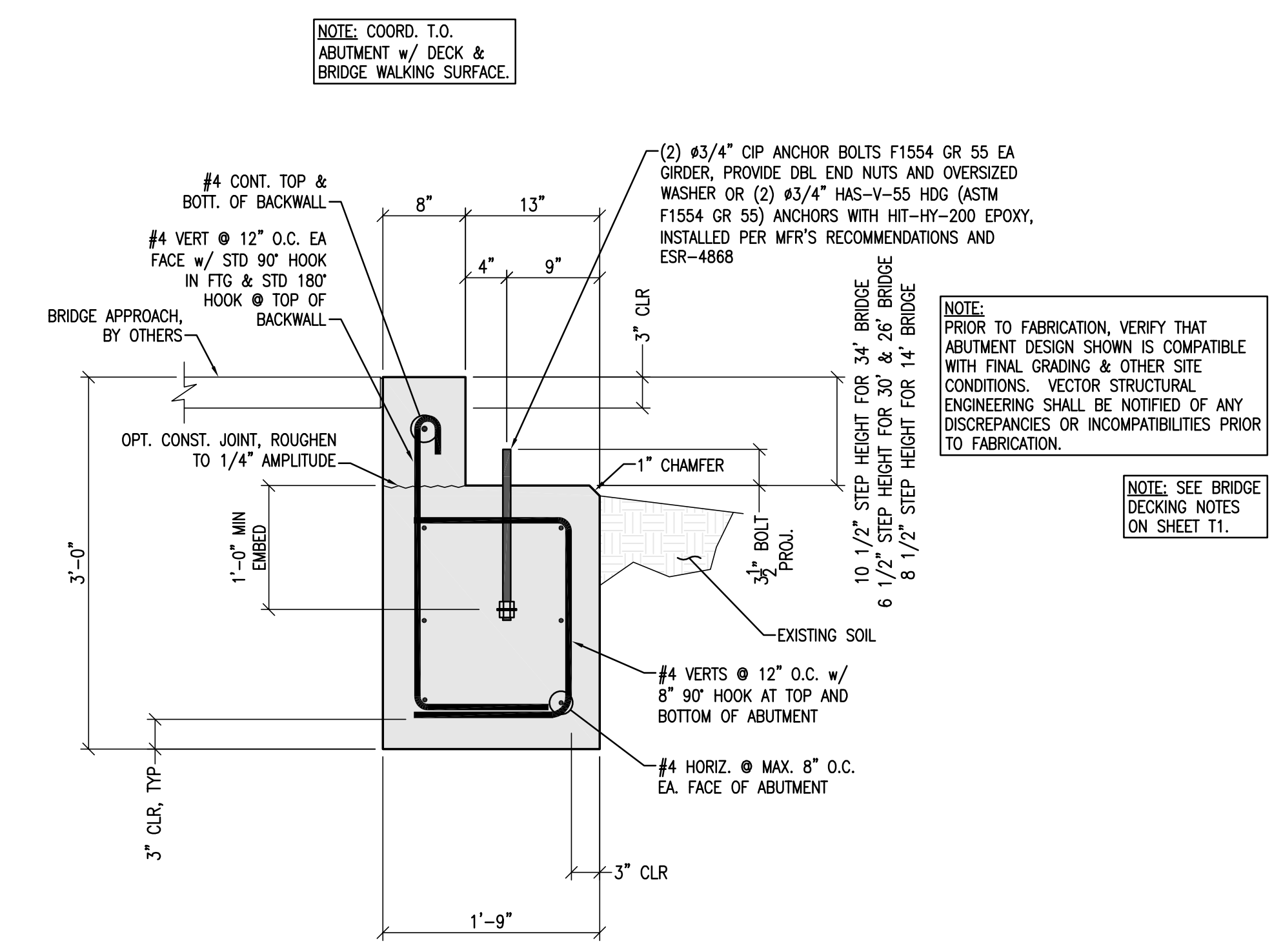
1



14' BRIDGE ABUTMENT PLAN VIEW

N.T.S.

3



ABUTMENT SECTION

N.T.S.

2

REV. #	DATE	BY	ENG. MBT	DWN. DKF	CHK. ESS

VECTOR ENGINEERS
 DRAPER, UTAH
 (801) 990-1775
 WWW.VECTORENGINEERS.COM
 OH FIRM LICENSE NUMBER
 13902

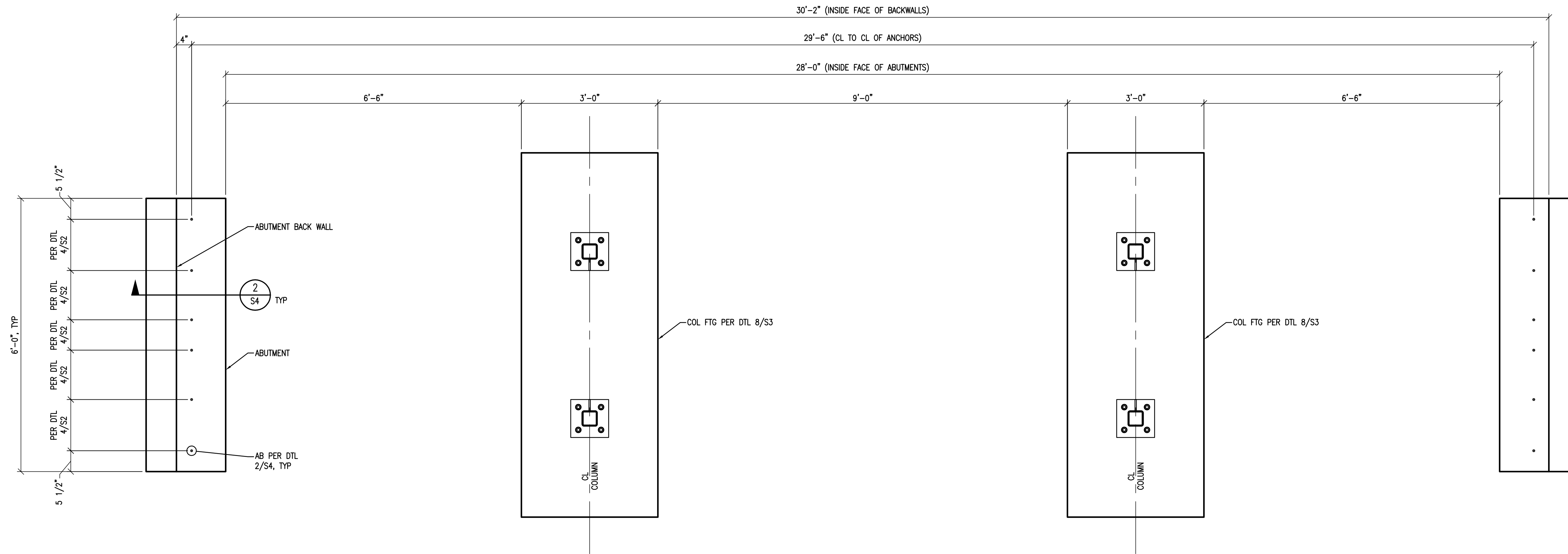
Copyright © 2024
 Vector Structural Engineering, LLC
 This drawing contains proprietary information
 belonging to Vector Structural Engineering, LLC,
 and may be neither wholly nor partially copied or
 reproduced without the prior written permission of
 Vector Structural Engineering, LLC.

GLEN HELEN ASSOCIATION
1B, 24B, 27B, AND 33B BRIDGES
YELLOW SPRINGS, OH 45387
ABUTMENT DETAILS

STATE OF OHIO
 RUSSELL N. EMERY
 PE-84657
 REGISTERED PROFESSIONAL ENGINEER
 07/22/2024
 RUSSELL N. EMERY, P.E.
 PE-84657

U6044.0002.241

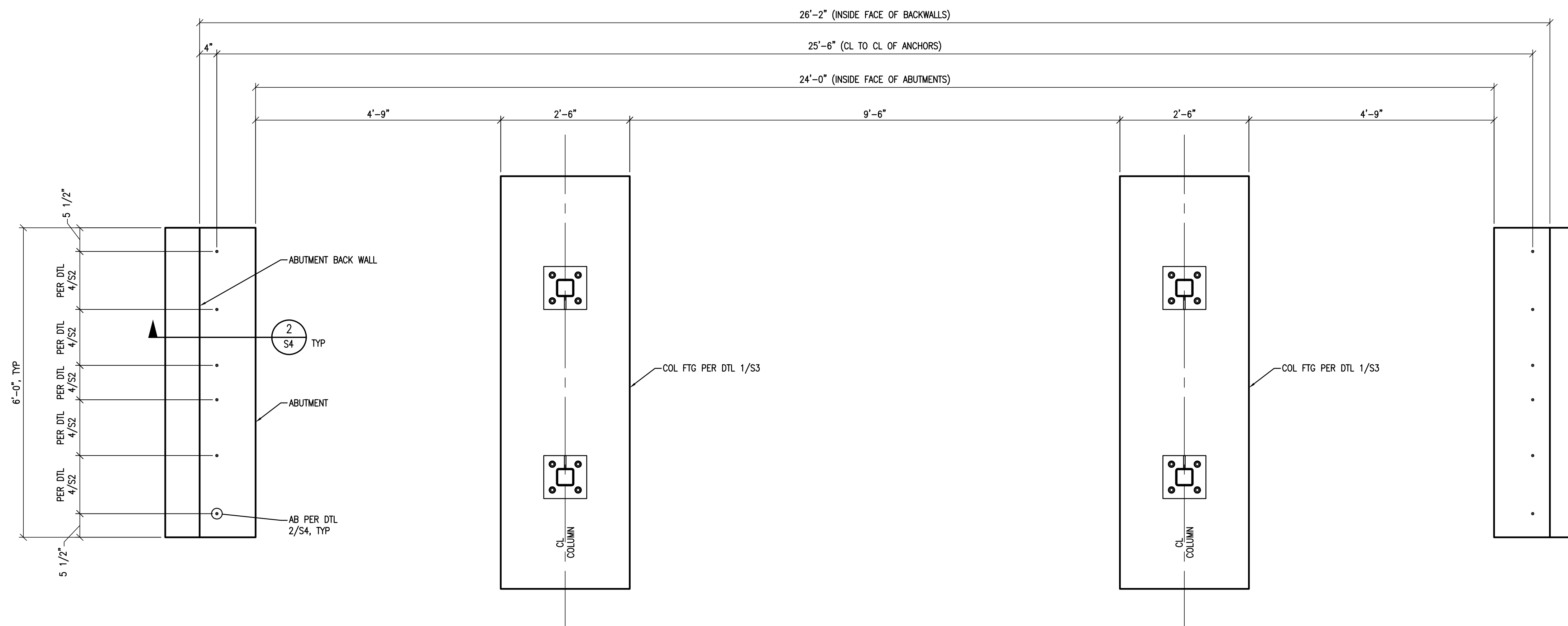
S4



30' BRIDGE ABUTMENT PLAN VIEW

N.T.S.

1

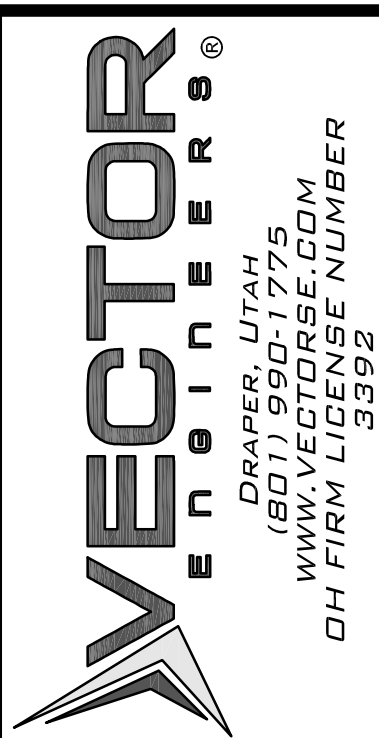


26' BRIDGE ABUTMENT PLAN VIEW

N.T.S.

2

REV. #	DATE	BY	ENG. MBT	DWG. DFK	CHK. ESS



Copyright © 2024
 Vector Structural Engineering, LLC
 This drawing contains proprietary information
 belonging to Vector Structural Engineering, LLC,
 and may be neither wholly nor partially copied or
 reproduced without the prior written permission of
 Vector Structural Engineering, LLC.

GLEN HELEN ASSOCIATION
1B, 24B, 27B, AND 33B BRIDGES
YELLOW SPRINGS, OH 45387
ABUTMENT DETAILS



U6044.0002.241

S4.1