

THESE SERIAL NUMBER PLATES TO BE PRE-INSTALLED AT THE FACTORY W/3/16" DIA. RIVETS.

SEE NOTE 2 FOR BRIDGE SIGN INFORMATION. THE TOP OF THE SIGN MUST BE 5' OFF OF THE GROUND.

SEE NOTE 3 FOR SPEED LIMIT SIGN INFORMATION.

CONCRETE FOUNDATION (BY OTHERS)

35'-0"x4'-0" BRIDGE-ISOMETRIC VIEW

BRIDGE PARTS BILL-OF-MATERIAL (BOM)			
P/N	QTY.	DESCRIPTION	LENGTH
AN17	16	L4XX1/2 FRP ANGLE	0'-6"
B679	2	CBX2 3/16X3/8 FRP CAP BEAM	35'-0"
B688	2	CBX2 3/16X3/8 FRP TOP CHORD BEAM	35'-0"
B689	2	CBX2 3/16X3/8 FRP TOP CHORD BEAM	35'-0"
B696	1	CBX2 3/16X3/8 FRP BOTTOM CHORD BEAM	35'-0"
B697	1	CBX2 3/16X3/8 FRP FLOOR BEAM	35'-0"
B698	1	CBX2 3/16X3/8 FRP BOTTOM CHORD BEAM	35'-0"
B699	1	CBX2 3/16X3/8 FRP BOTTOM CHORD BEAM	35'-0"
B700	1	CBX2 3/16X3/8 FRP BOTTOM CHORD BEAM	35'-0"
BR13	4	SQT82-1/2X2-1/2X1/4 FRP DIAGONAL WEB TUBE	6'-8 1/2"
BR15	12	SQT82-1/2X2-1/2X1/4 FRP OUTRIGGER BRACING	6'-3 3/8"
BR17	10	SQT82-1/2X2-1/2X1/4 FRP DIAGONAL WEB TUBE	6'-10 7/8"
BR78	2	SQT82X2X1/4 FRP HORIZONTAL BRACE	6'-4 3/16"
BR79	2	SQT82X2X1/4 FRP HORIZONTAL BRACE	6'-4 3/16"
BR82	5	SQT82X2X1/4 FRP HORIZONTAL BRACE	6'-9 13/16"
BR83	4	SQT82X2X1/4 FRP HOR. BRACE SPACER	0'-9 3/4"
ETFB_9	2	CBX2 3/16X3/8 FRP BEAM	2'-2 11/16"
ETFB_10	2	CBX2 3/16X3/8 FRP BEAM	2'-0 11/16"
GUST_1	24	PL3/8"x6 1/2"x1/4 FRP GUSSET PLATE	0'-7"
LTB_5	6	CBX2 3/16X3/8 FRP TRANSVERSE BEAM	11'-8"
LTB_6	6	CBX2 3/16X3/8 FRP TRANSVERSE BEAM	11'-8"
MR78	12	C3X1 1/2X1/4 FRP MDRAIL	14'-9 11/16"
MR109	12	C3X1 1/2X1/4 FRP MDRAIL	19'-9 11/16"
P8	2	SQT83X3X1/4 FRP SIGN POST	8'-0"
P16	2	SQT82-1/2X2-1/2X1/4 FRP VERTICAL WEB TUBE	5'-4 1/2"
P17	1	SQT82-1/2X2-1/2X1/4 FRP VERTICAL WEB TUBE	5'-4 1/2"
P18	10	SQT82-1/2X2-1/2X1/4 FRP VERTICAL WEB TUBE	6'-0 1/2"
P19	1	SQT82-1/2X2-1/2X1/4 FRP VERTICAL WEB TUBE	5'-4 1/2"
P20	2	SQT82-1/2X2-1/2X1/4 FRP VERTICAL WEB TUBE	6'-0 1/2"
PL28	2	PL1/2"x10" FRP BASE PLATE	0'-8 7/8"
PL29	4	PL1/2"x10" FRP BASE PLATE	1'-0 1/4"
PL30	2	PL1/2"x5 7/16" FRP SPACER PLATE	0'-4 3/4"
PL31	8	PL1/2"x5 7/16" FRP SPACER PLATE	0'-6"
SP17	4	SQT82-1/2X2-1/2X1/4 FRP SPACER TUBE	0'-8"
SP18	8	SQT82-1/2X2-1/2X1/4 FRP SPACER TUBE	0'-8"
SP19	6	SQT82-1/2X2-1/2X1/4 FRP SPACER TUBE	1'-4"
DECK51	36	3X12 PT SYP WOOD DECKBOARD	4'-5"
DECK66	1	3X12 PT SYP WOOD DECKBOARD	4'-5"
P_BRKT_5	2	L6X4X3/8 A572 GR.50 GALV. ANGLE	0'-4 3/4"
P_BRKT_6	2	L6X4X3/8 A572 GR.50 GALV. ANGLE	0'-4 3/4"
P_BRKT_7	4	L6X4X1/2 A572 GR.50 GALV. ANGLE	0'-6"
P_BRKT_8	4	L6X4X1/2 A572 GR.50 GALV. ANGLE	0'-6"

HARDWARE BOM			
QTY.	DIA.	DESCRIPTION	LENGTH
33	1/2"	BOLT A307 GRADE A-GALV.	0'-3 1/2"
10	1/2"	BOLT A307 GRADE A-GALV.	0'-5 1/2"
24	3/8"	BOLT A307 GRADE A-GALV.	0'-2 1/2"
72	3/8"	BOLT A307 GRADE A-GALV.	0'-4 1/2"
16	3/8"	BOLT A307 GRADE A-GALV.	0'-5"
4	5/8"	BOLT A307 GRADE A-GALV.	0'-3"
176	5/8"	BOLT A307 GRADE A-GALV.	0'-4 1/2"
12	5/8"	BOLT A307 GRADE A-GALV.	0'-4"
16	5/8"	BOLT A307 GRADE A-GALV.	0'-6 1/2"
96	3/8"	BOLT CRGE. A307 GRADE A-GALV.	0'-2"
108	#14	18-8SS SELF DRILLING HEX HEAD SCREW	0'-2 1/2"
222	#14	18-8SS SELF DRILLING FLAT HEAD SCREW	0'-4"
43	1/2"	NUT HEX	-
208	3/8"	NUT HEX	-
208	5/8"	NUT HEX	-
43	1/2"	WASHER PLAIN	-
320	3/8"	WASHER PLAIN	-
416	5/8"	WASHER PLAIN	-
43	1/2"	WASHER SPRING	-
112	3/8"	WASHER SPRING	-
208	5/8"	WASHER SPRING	-

TOTAL DEAD WEIGHT OF 35'-0"x4'-0" BRIDGE IS EQUAL TO: 4,400 LBS. THIS DEAD WEIGHT INCLUDES THE DECKING WEIGHT OF 1,306 LBS.

BRIDGE TO BE PRE-CAMBERED TO 1/2".

FRP STRUCTURAL SHAPES :

FRP STRUCTURAL SHAPES BY BEDFORD REINFORCED PLASTICS, STANDARD GRADE POLYESTER 1-400 RESIN, COLOR TO BE OLIVE GREEN, STANDARD STRUCTURAL SHAPES ARE MANUFACTURED USING A SURFACE VEIL AS U.V. INHIBITOR TO PROTECT AGAINST U.V. DEGRADATION.

FASTENERS :

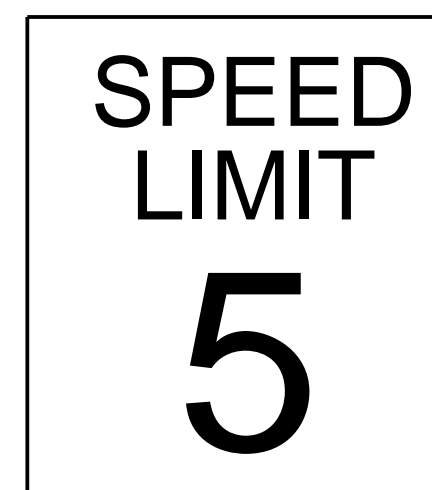
ALL HARDWARE IS A307 HD GRADE A GALVANIZED U.N.O. AT TRUSS WEB/CHORD CONNECTIONS ONLY. TIGHTEN DOWN BOLT ASSEMBLIES WITH A TORQUE WRENCH SET AT A MINIMUM AMOUNT OF 45 FT-LBS. FOR ALL OTHER CONNECTIONS OF THE BRIDGE, TIGHTEN DOWN BOLT ASSEMBLIES TO COMPRESS OR FLATTEN THE SPRING WASHERS. OVERTIGHTENED BOLTS CAN CAUSE DAMAGE TO HOLLOW PARTS.

DECKING :

3X12 PT SYP WOODEN DECKING IS TO BE PROVIDED BY BEDFORD.

NOTES:

- ALL A572 GR.50 STEEL TO BE GALVANIZED.
- POLE-MOUNTED SIGNS TO BE INSTALLED AT EACH END OF BRIDGE THAT READ "PEDESTRIAN, EQUESTRIAN AND ATV TRAFFIC ONLY".
- AN ADDITIONAL SIGN BELOW THE TOP SIGN WILL READ "SPEED LIMIT 5".
- THE VERTICAL TRUSSES ARE NOT RATED TO WITHSTAND LATERAL VEHICULAR IMPACT.



SIGN EXAMPLE

- REVISE AND RESUBMIT
- APPROVED AS NOTED
- APPROVED

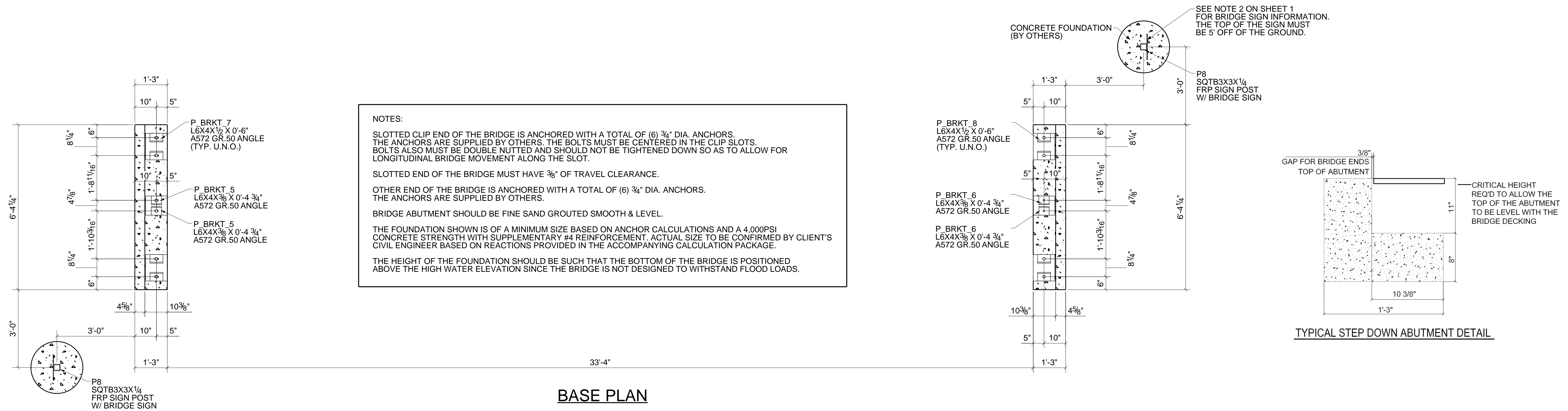
SIGNATURE \_\_\_\_\_ DATE \_\_\_\_\_

1	VAR	08/07/2023	FOR SECOND RELEASE
0	VAR	07/20/2023	FOR FIRST RELEASE
REV.	BY	DATE	DESCRIPTION

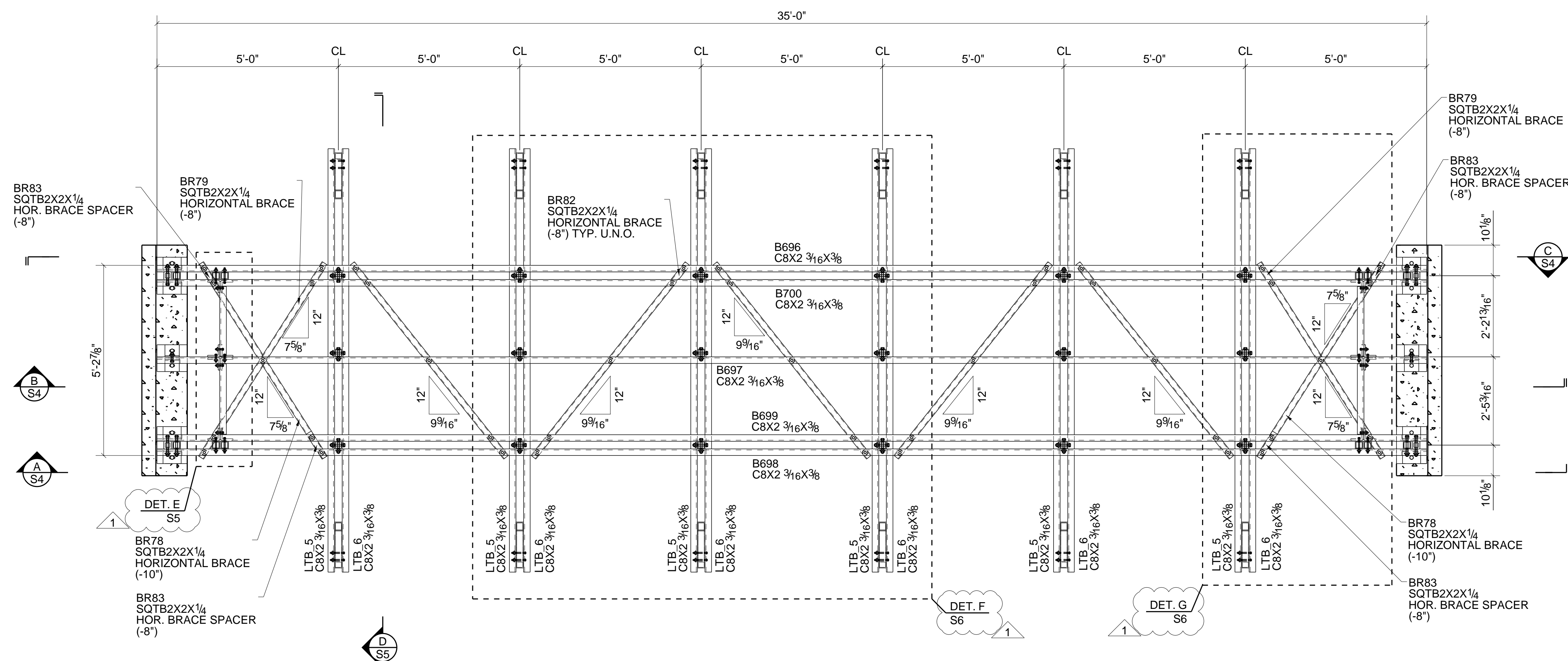
Since 1974

THIS DRAWING IS THE CONFIDENTIAL PROPERTY OF BEDFORD REINFORCED PLASTICS, INC. AND MUST NOT BE MADE PUBLIC OR COPIED, AND IS SUBJECT TO RETURN ON DEMAND. ALL RIGHTS OF INVENTION OR DESIGN ARE RESERVED.

TOLERANCES	DRAWN BY: VAR	TITLE
X/Y: ± 1/16	CHECKED BY: PVR	JOB <b>P35.4.54.GS.WD.GN</b>
.XX: ± .030	DESIGNED BY: CS	
.XXX: ± .010	DATE: 07/20/2023	
ANG: ± 0.5°	REF.	DRAWING NO. S1 SCALE: - REV. 1 D-SIZE SHEET S1 OF S7



**BASE PLAN**



**BOTTOM CHORD PLAN**

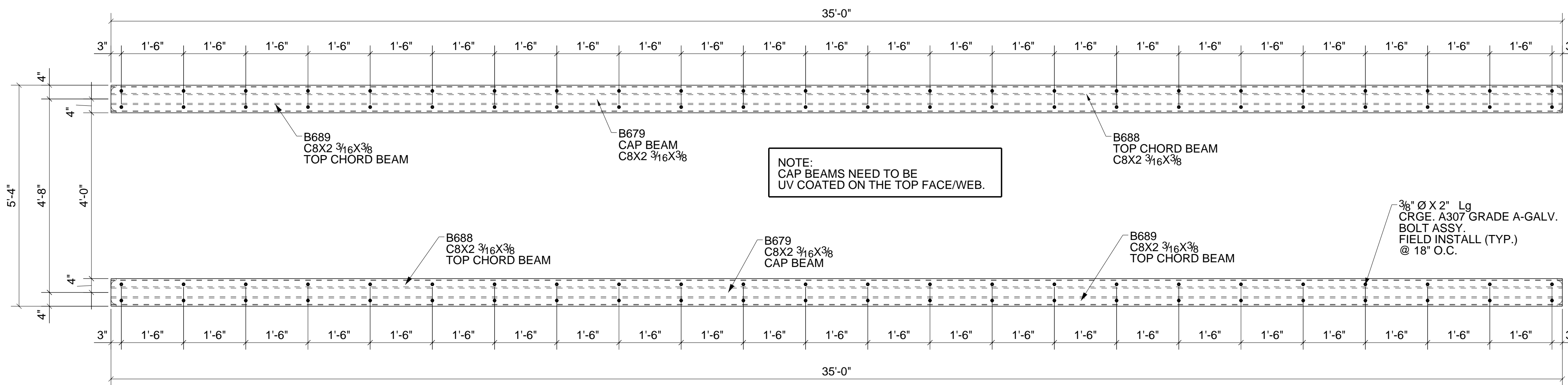


THIS DRAWING IS THE CONFIDENTIAL PROPERTY OF BEDFORD REINFORCED PLASTICS, INC. AND MUST NOT BE MADE PUBLIC OR COPIED, AND IS SUBJECT TO RETURN ON DEMAND. ALL RIGHTS OF INVENTION OR DESIGN ARE RESERVED.

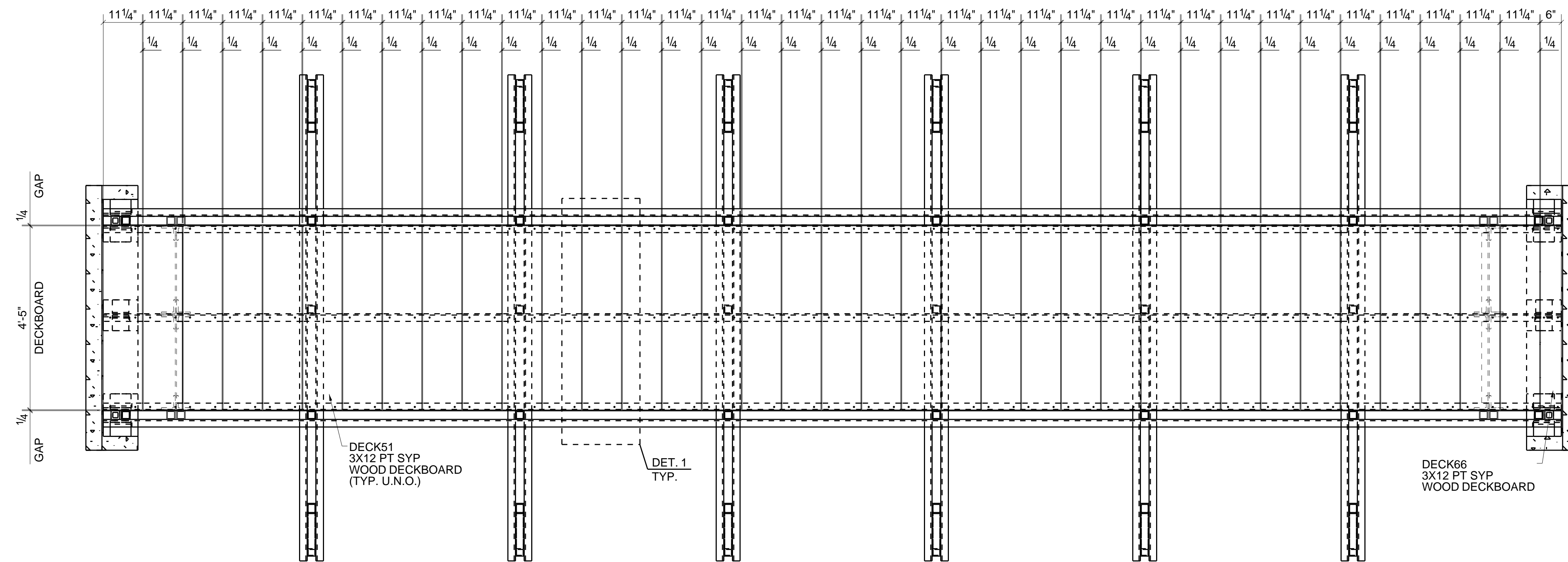
TOLERANCES	DRAWN BY:	TITLE
X/Y: ± 1/16	VAR	
.XX: ± .030	CHECKED BY:	
	PVR	
	DESIGNED BY:	JOB
	CS	P35.4.54.GS.WD.GN
	DATE:	DRAWING NO.
	07/20/2023	S2
	REF.	SCALE
		REV
		1
		SHEET S2 OF S7

REV.	BY	DATE	DESCRIPTION
1	VAR	08/07/2023	FOR SECOND RELEASE
0	VAR	07/20/2023	FOR FIRST RELEASE

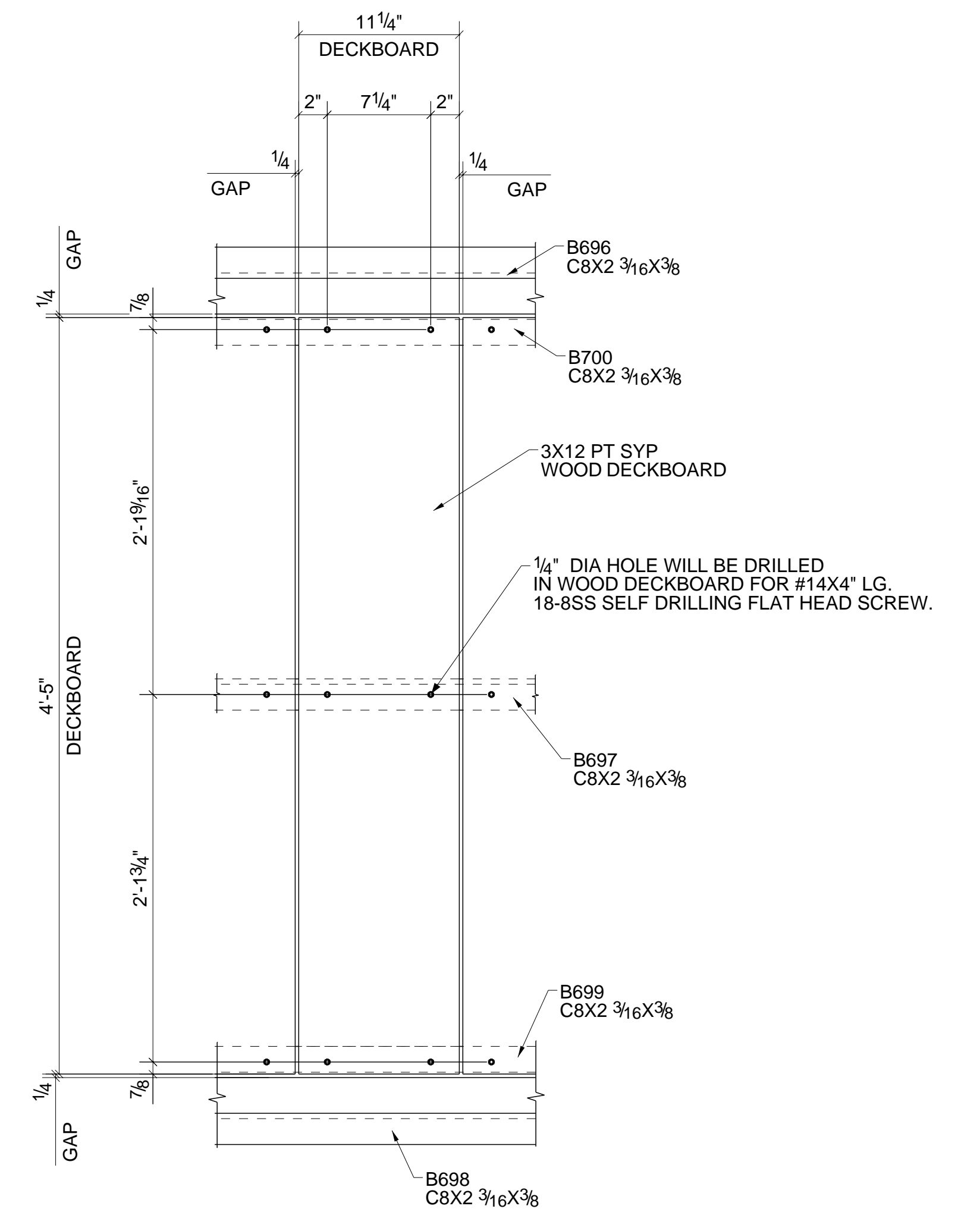
.XXX: ± .010	ANG: ± 0.5°
--------------	-------------



TOP CHORD PLAN



DECKING PLAN



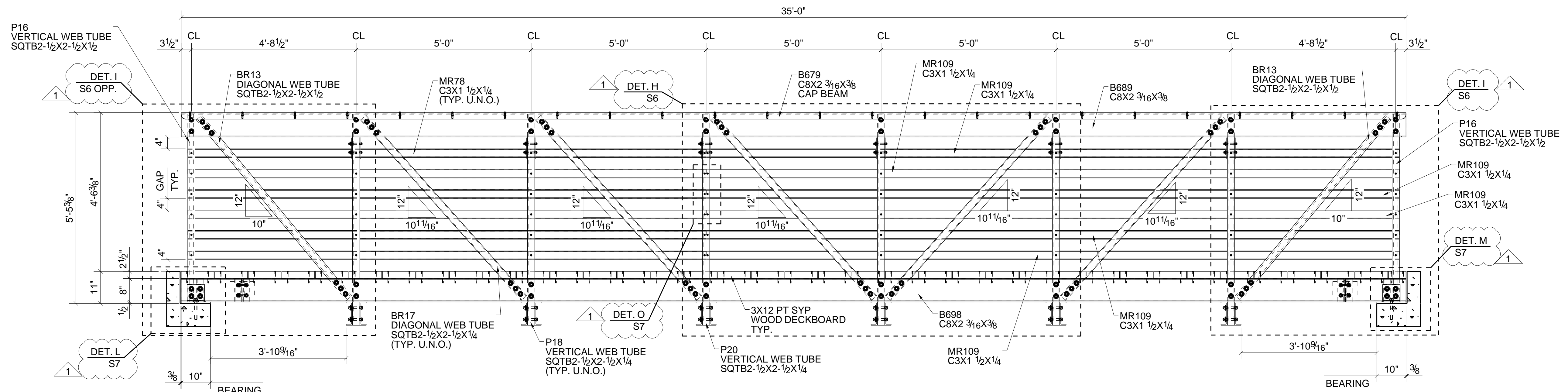
DETAIL 1  
TYPICAL 3X12 PT SYP WOODEN DECKBOARD DETAIL



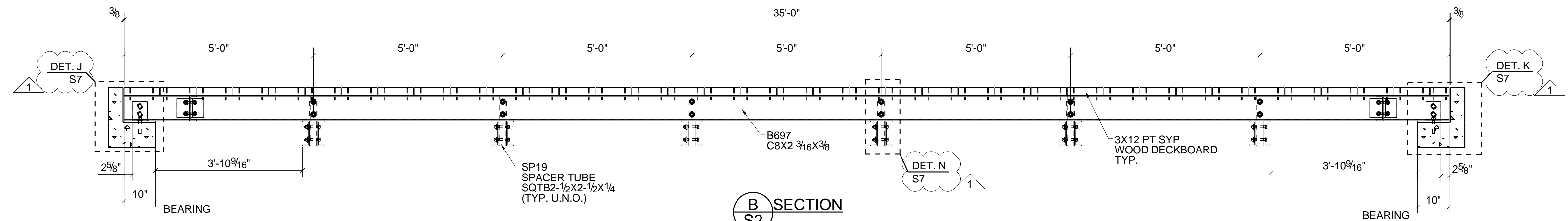
THIS DRAWING IS THE CONFIDENTIAL PROPERTY OF BEDFORD REINFORCED PLASTICS, INC. AND MUST NOT BE MADE PUBLIC OR COPIED, AND IS SUBJECT TO RETURN ON DEMAND. ALL RIGHTS OF INVENTION OR DESIGN ARE RESERVED.

TOLERANCES	DRAWN BY:	TITLE
X/Y: ± 1/16	VAR	
.XX: ± .030	CHECKED BY:	
.XXX: ± .010	PVR	
ANG: ± 0.5°	DESIGNED BY:	
	CS	JOB
	DATE:	P35.4.54.GS.WD.GN
	07/20/2023	DRAWING NO.
	REF.	S3
		SCALE
		REV
		1
		SHEET S3 OF S7

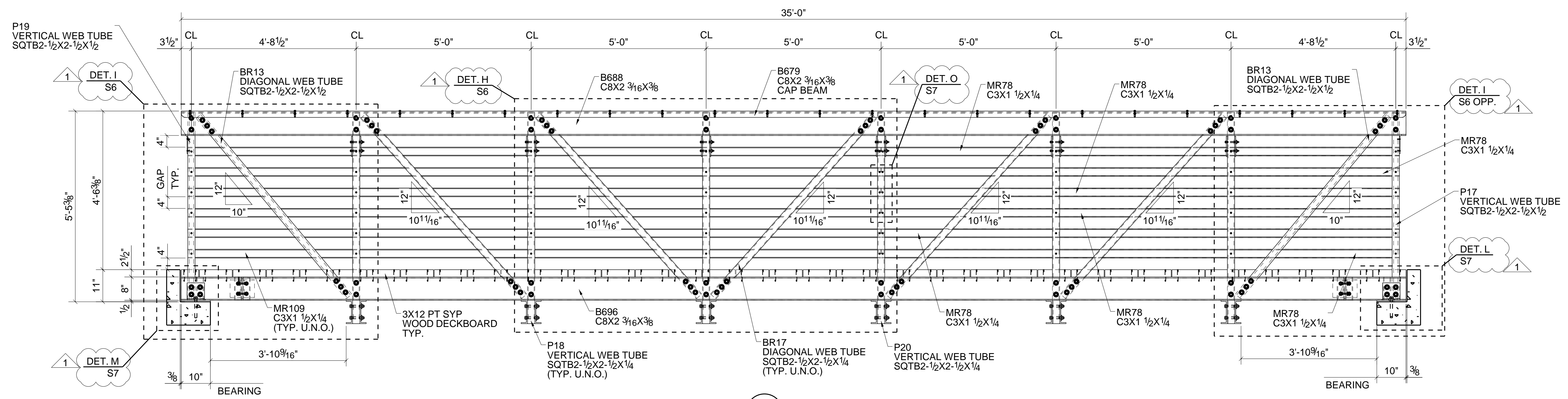
REV.	BY	DATE	DESCRIPTION
1	VAR	08/07/2023	FOR SECOND RELEASE
0	VAR	07/20/2023	FOR FIRST RELEASE



**A SECTION**  
S2



**B SECTION**  
S2



**C SECTION**  
S2

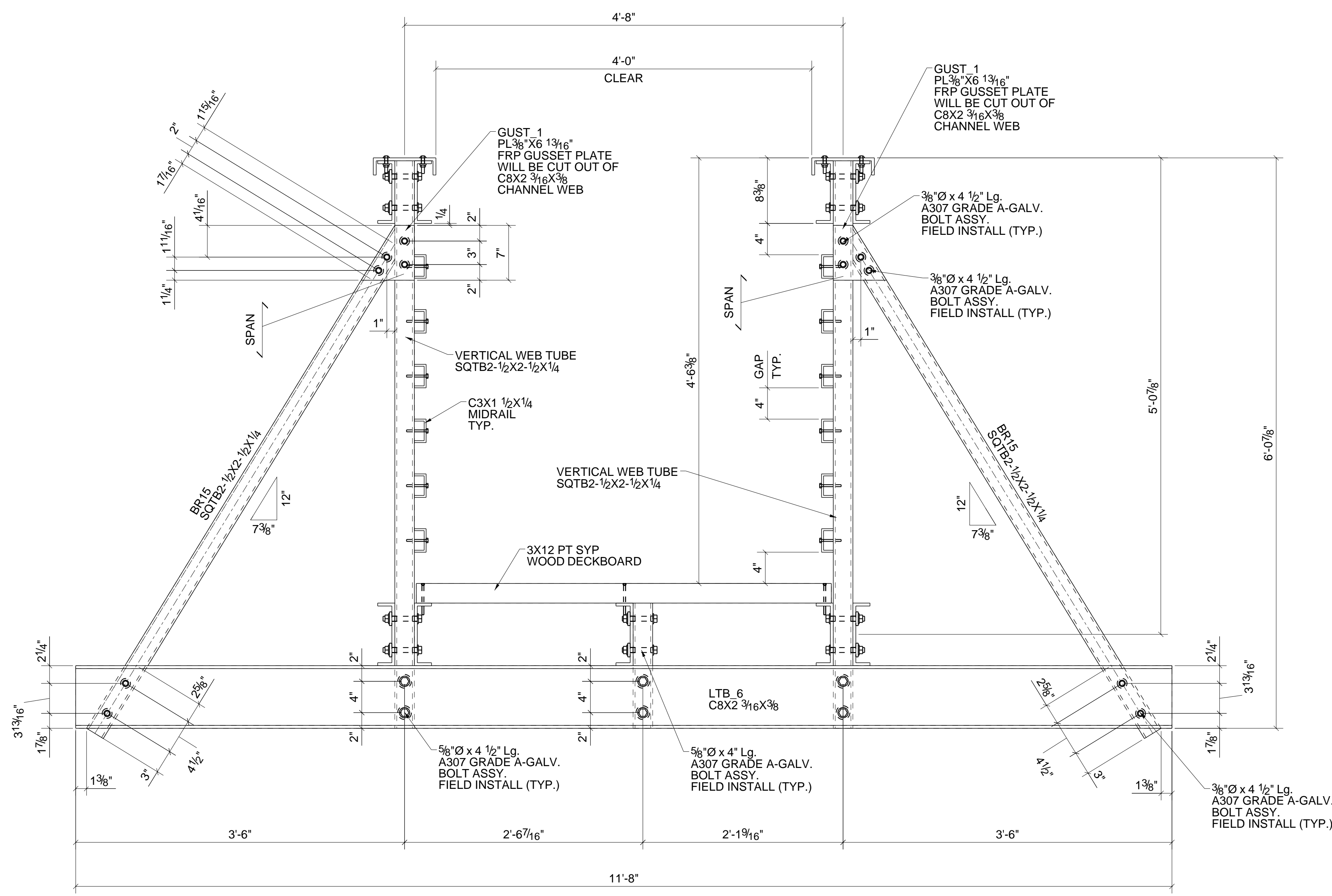


THIS DRAWING IS THE CONFIDENTIAL PROPERTY OF BEDFORD REINFORCED PLASTICS, INC. AND MUST NOT BE MADE PUBLIC OR COPIED, AND IS SUBJECT TO RETURN ON DEMAND. ALL RIGHTS OF INVENTION OR DESIGN ARE RESERVED.

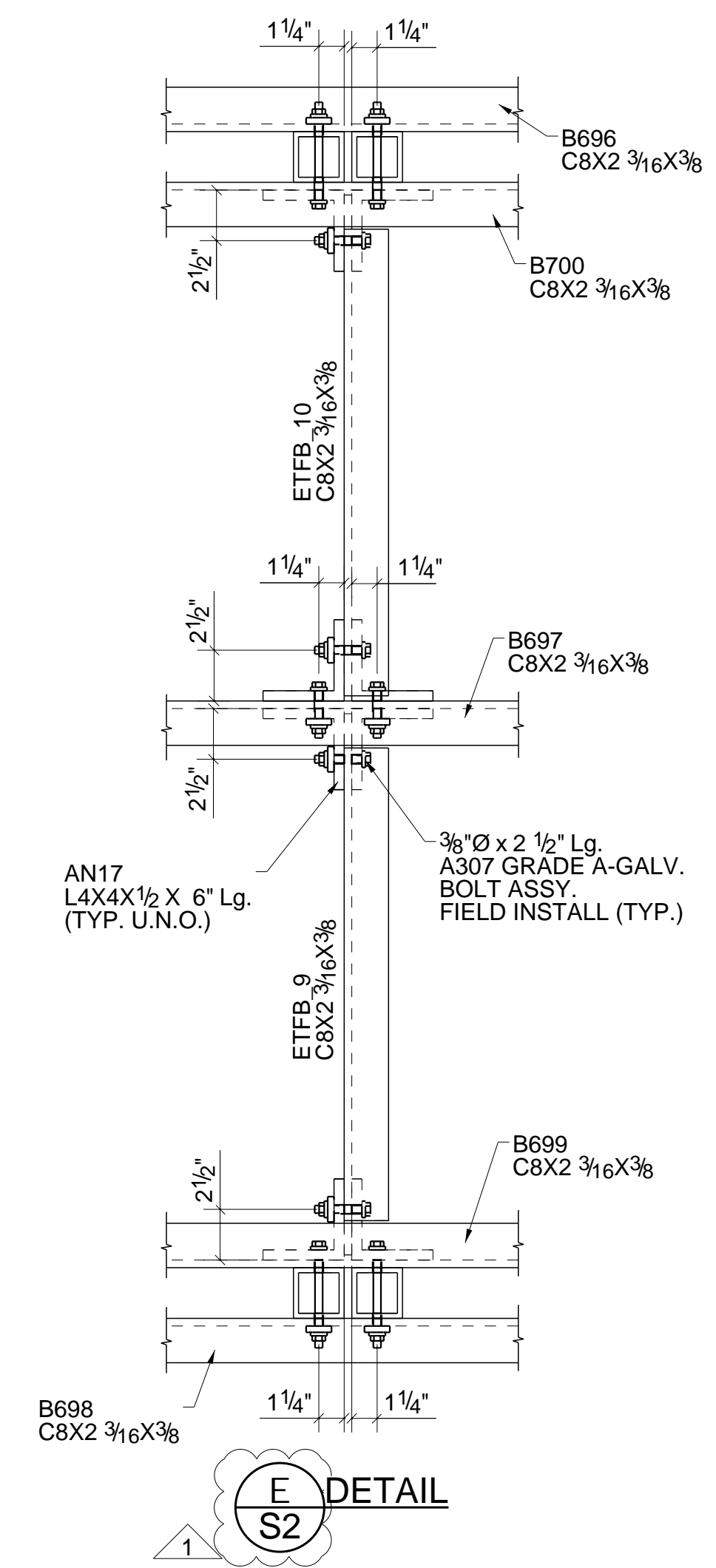
TOLERANCES		DRAWN BY: VAR	TITLE
X/Y: ± 1/16		CHECKED BY: PVR	
.XX: ± .030		DESIGNED BY: CS	JOB P35.4.54.GS.WD.GN
.XXX: ± .010		DATE: 07/20/2023	DRAWING NO. S4
ANG: ± 0.5°		REF.	D-SIZE
		REV. 1	SHEET S4 OF S7

1	VAR	08/07/2023	FOR SECOND RELEASE
0	VAR	07/20/2023	FOR FIRST RELEASE
REV.	BY	DATE	DESCRIPTION

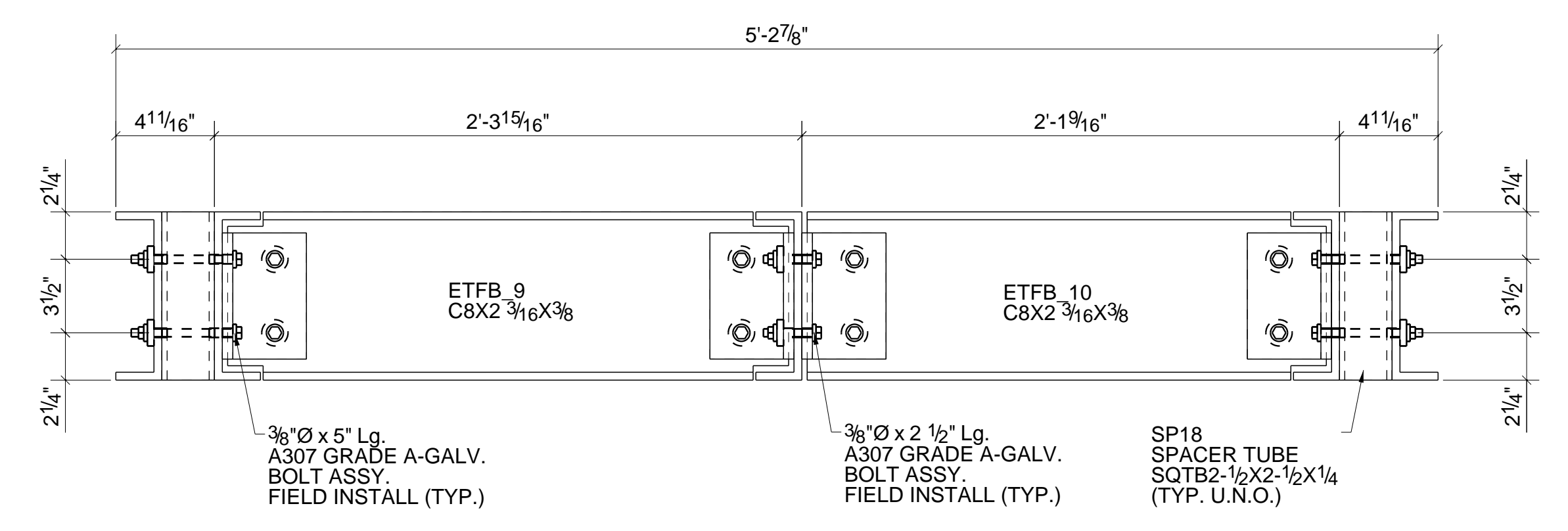
Tens Structures



**D SECTION**



**E DETAIL**



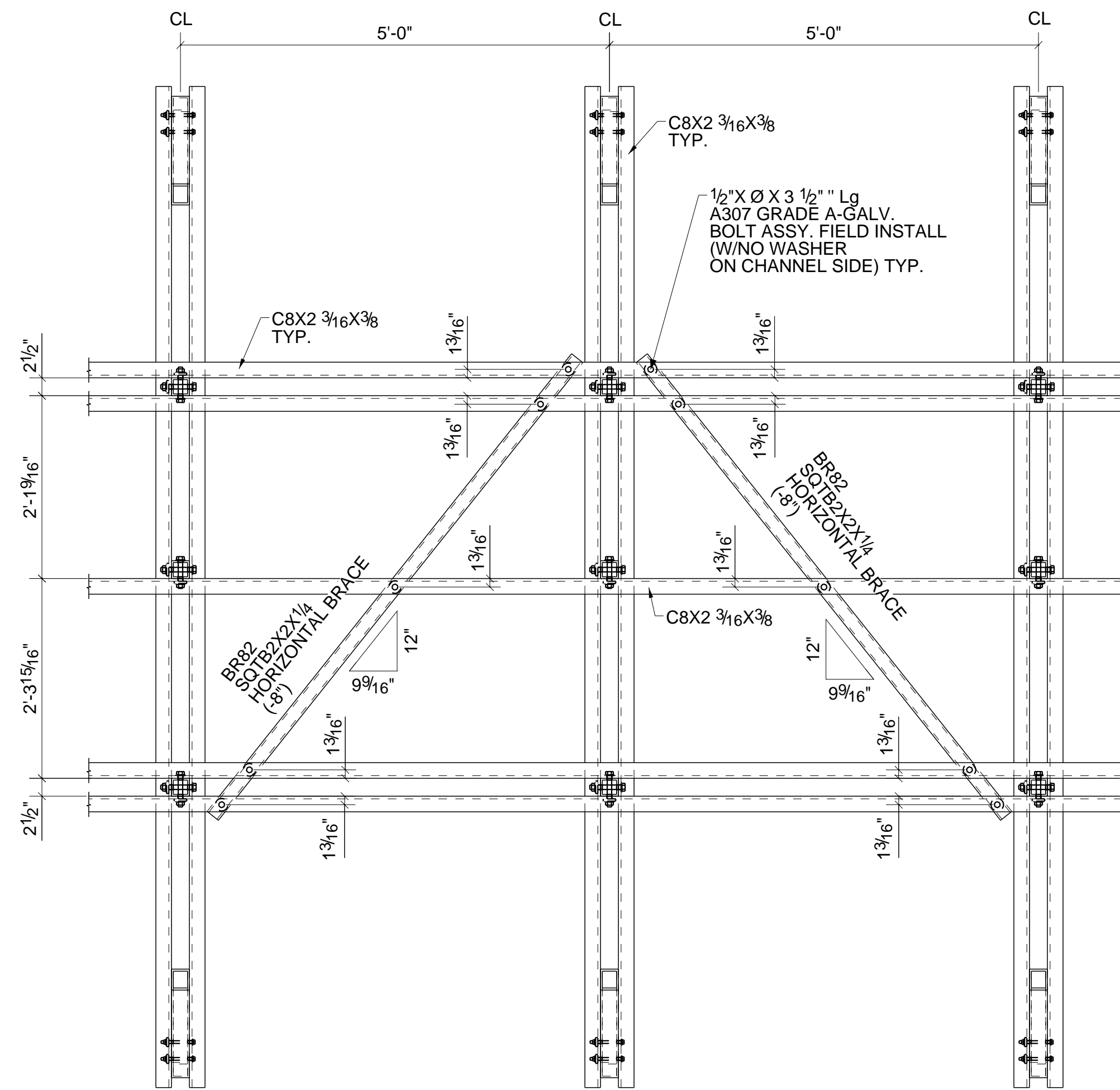
**SIDE VIEW**



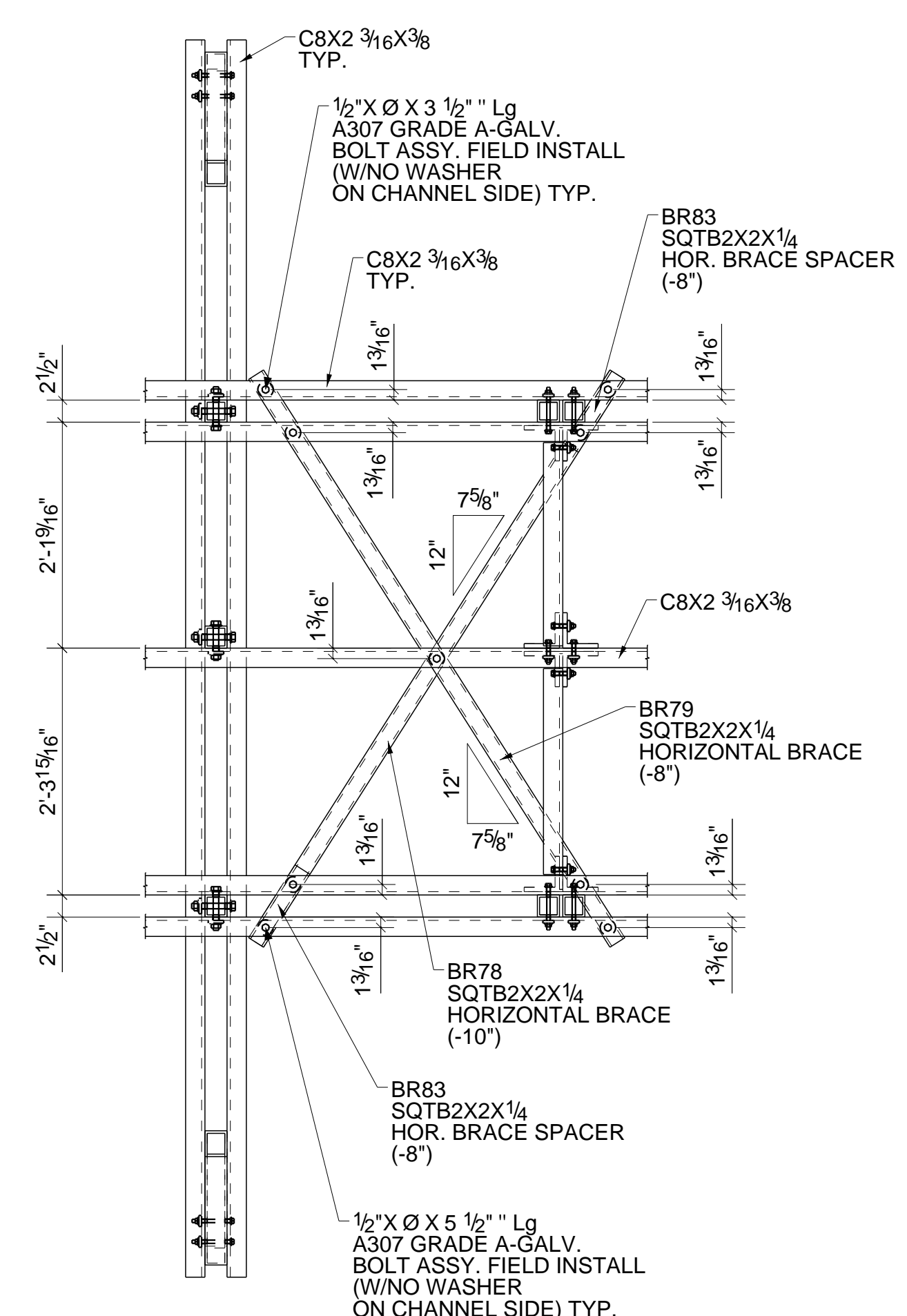
THIS DRAWING IS THE CONFIDENTIAL PROPERTY OF BEDFORD REINFORCED PLASTICS, INC. AND MUST NOT BE MADE PUBLIC OR COPIED, AND IS SUBJECT TO RETURN ON DEMAND. ALL RIGHTS OF INVENTION OR DESIGN ARE RESERVED.

TOLERANCES		DRAWN BY: VAR	TITLE
X/Y:	± 1/16	CHECKED BY: PVR	JOB <b>P35.4.54.GS.WD.GN</b>
.XX:	± .030	DESIGNED BY: CS	
.XXX:	± .010	DATE: 07/20/2023	DRAWING NO. <b>SS</b>
ANG:	± 0.5°	REF:	SCALE -
			REV. 1
			SHEET S5 OF S7

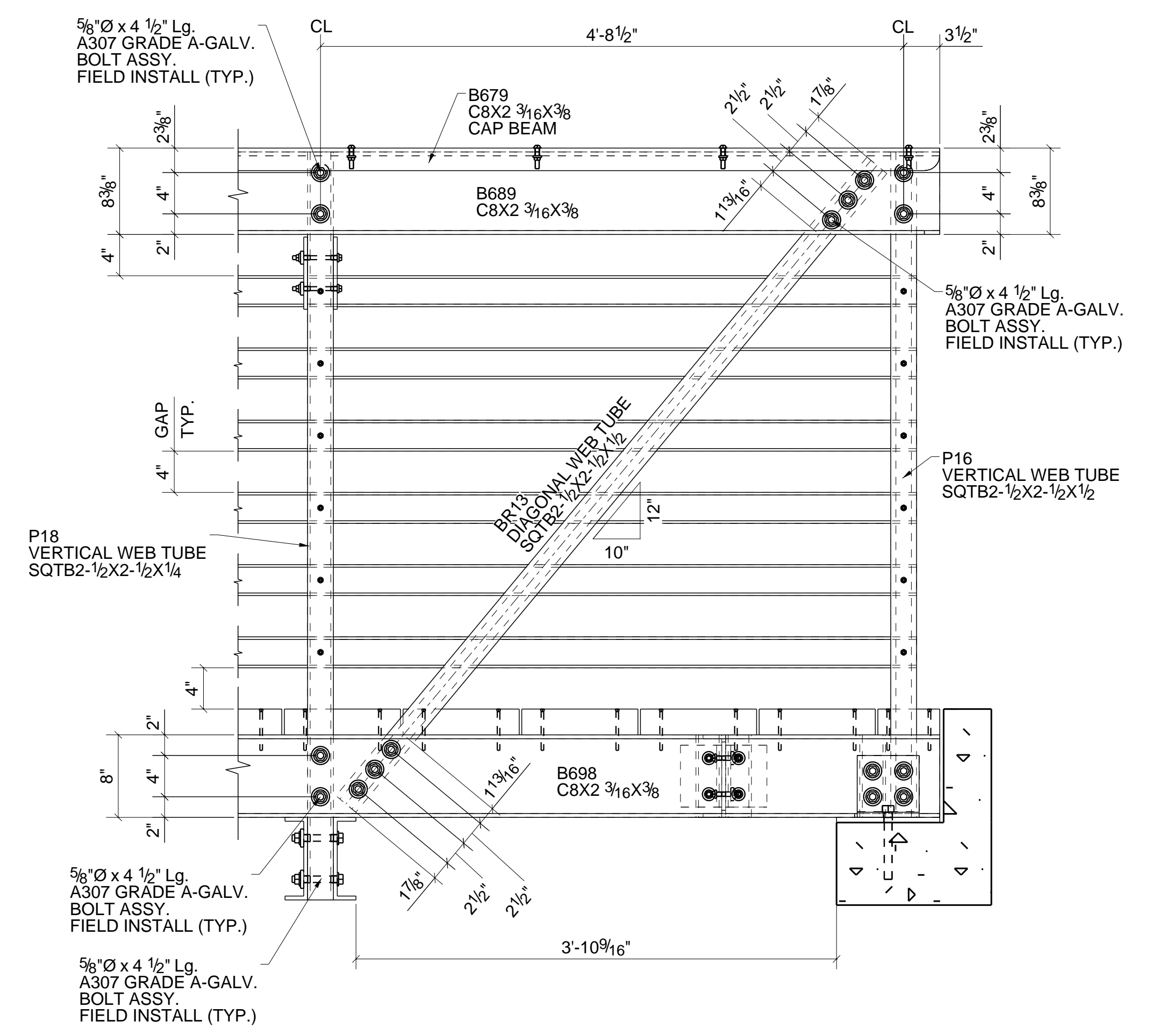
1	VAR	08/07/2023	FOR SECOND RELEASE
0	VAR	07/20/2023	FOR FIRST RELEASE
REV.	BY	DATE	DESCRIPTION



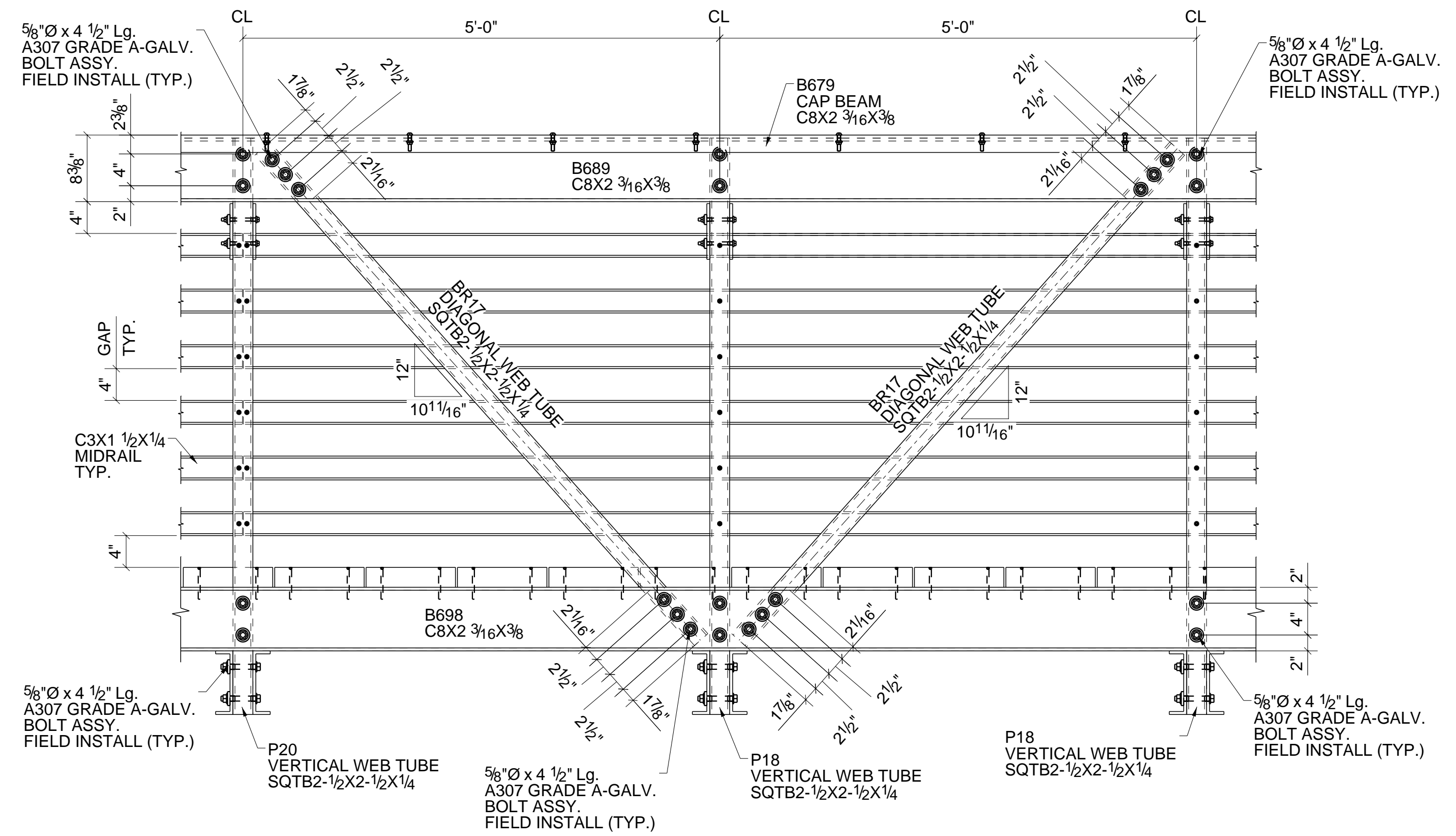
**F**  
S2 FOR SQT B2X2X1/4 HORIZONTAL BRACE




**G**  
S2 FOR SQT B2X2X1/4 HORIZONTAL END CROSS BRACE



**I**  
S4 FOR SQT B2-1/2X2-1/2X1/2 END DIAGONAL WEB TUBE



**H**  
S4 FOR SQT B2-1/2X2-1/2X1/4 DIAGONAL WEB TUBE



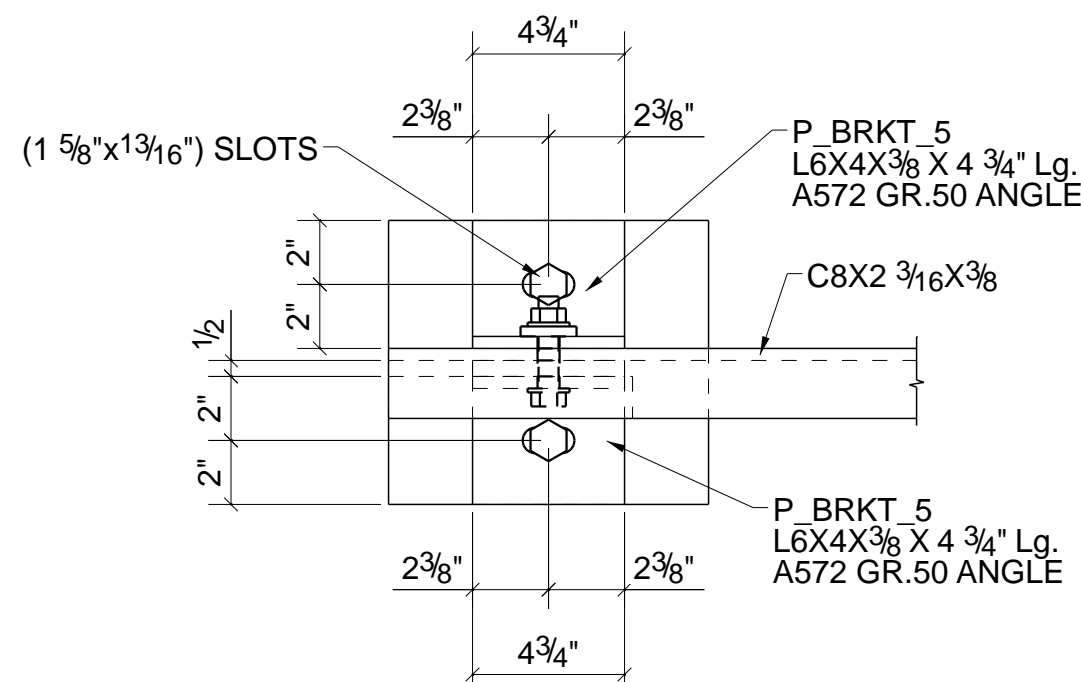
Since 1974

THIS DRAWING IS THE CONFIDENTIAL PROPERTY OF BEDFORD REINFORCED PLASTICS, INC. AND MUST NOT BE MADE PUBLIC OR COPIED, AND IS SUBJECT TO RETURN ON DEMAND. ALL RIGHTS OF INVENTION OR DESIGN ARE RESERVED.

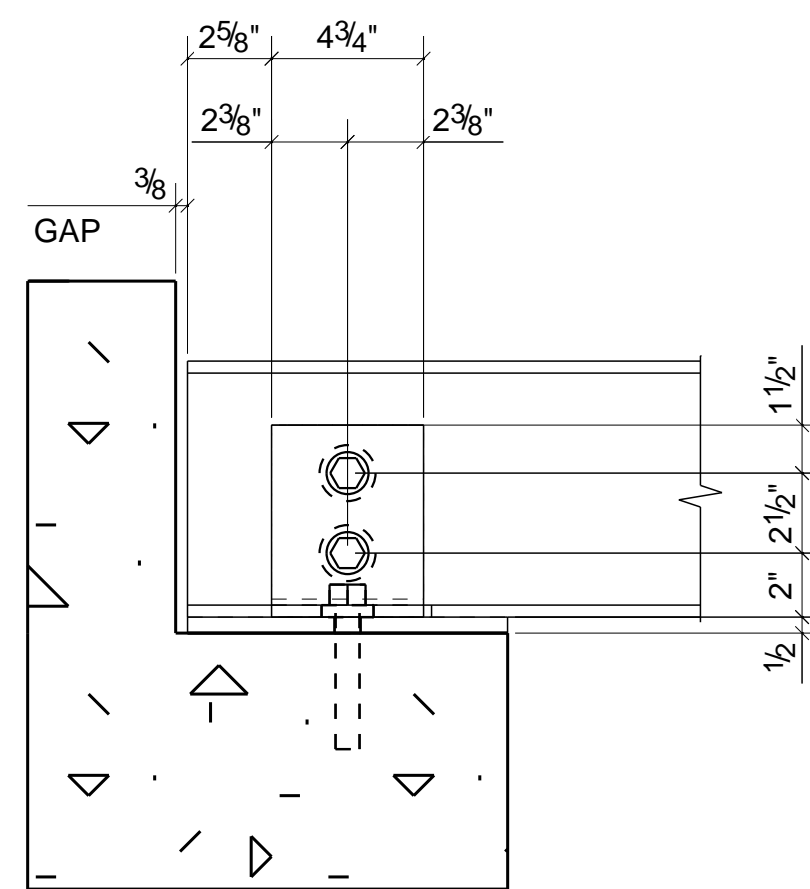
TOLERANCES	DRAWN BY: VAR	TITLE
X/Y: ± 1/16	CHECKED BY: PVR	
.XX: ± .030	DESIGNED BY: CS	JOB: P35.4.54.GS.WD.GN
.XXX: ± .010	DATE: 07/20/2023	DRAWING NO.: D-SIZE
ANG: ± 0.5°	REF.	SCALE: REV. 1 SHEET S6 OF S7

1	VAR	08/07/2023	FOR SECOND RELEASE
0	VAR	07/20/2023	FOR FIRST RELEASE
REV.	BY	DATE	DESCRIPTION

TRENK STRUCTURE

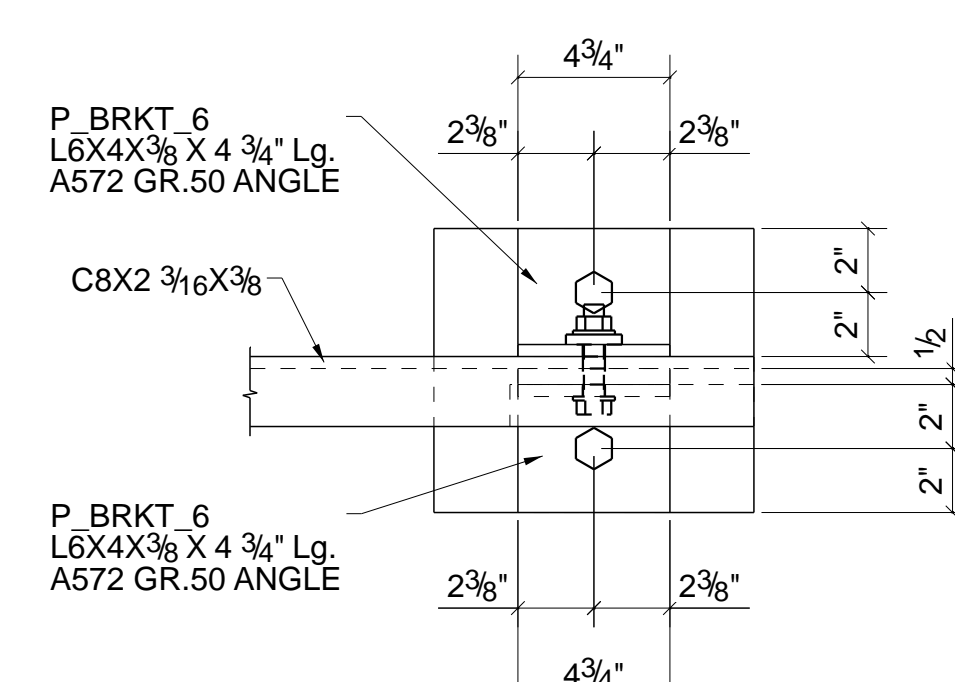


PLAN VIEW

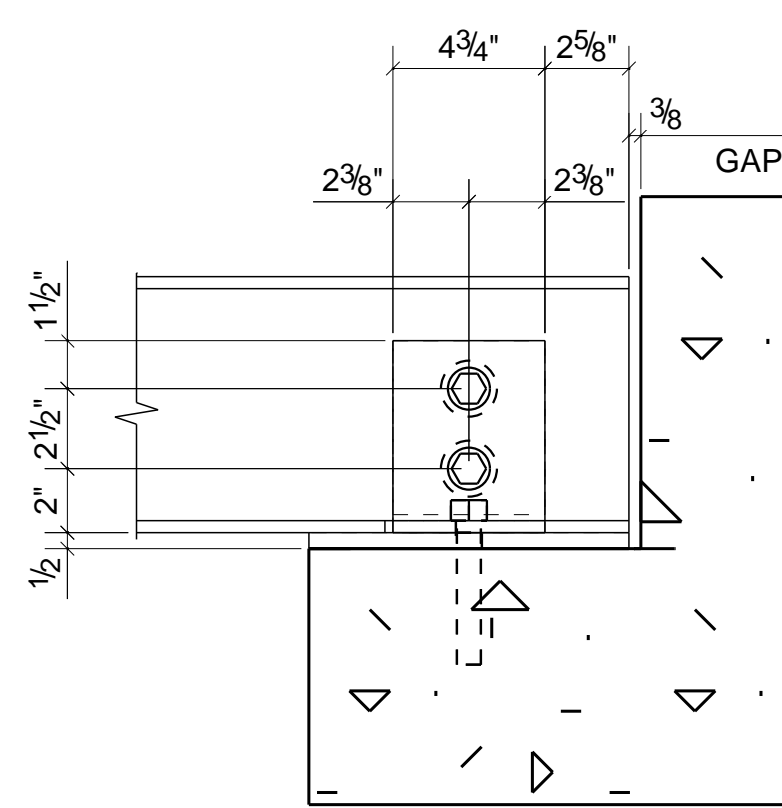


SIDE VIEW

**J**  
S4 BASE CLIP FOR C8X2 3/16X3/8 FLOOR BEAM

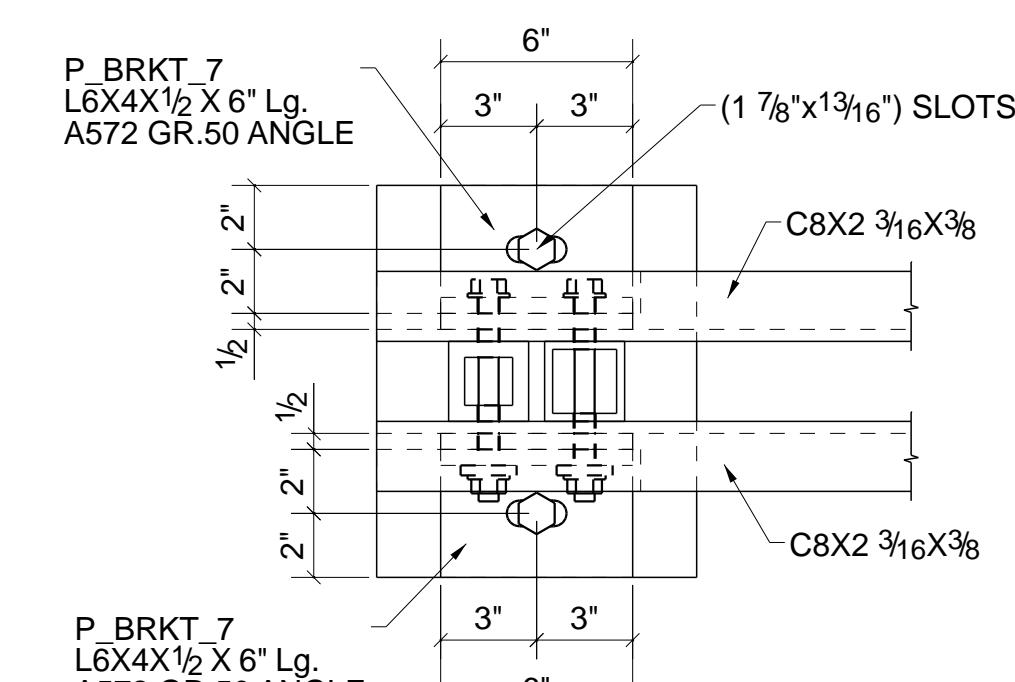


PLAN VIEW

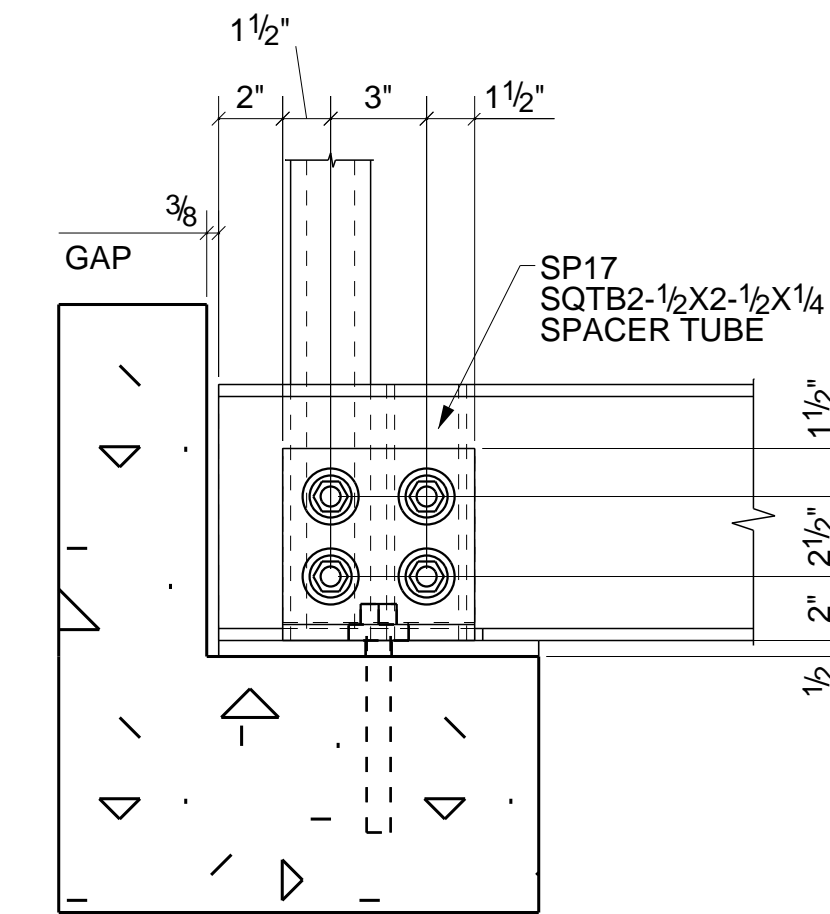


SIDE VIEW

**K**  
S4 BASE CLIP FOR C8X2 3/16X3/8 FLOOR BEAM

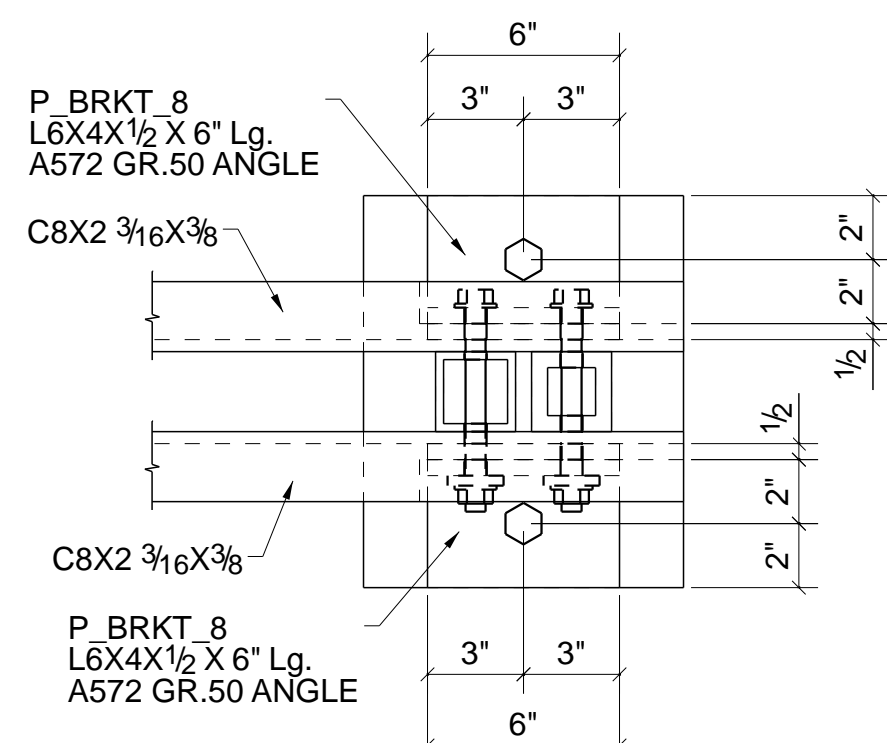


PLAN VIEW

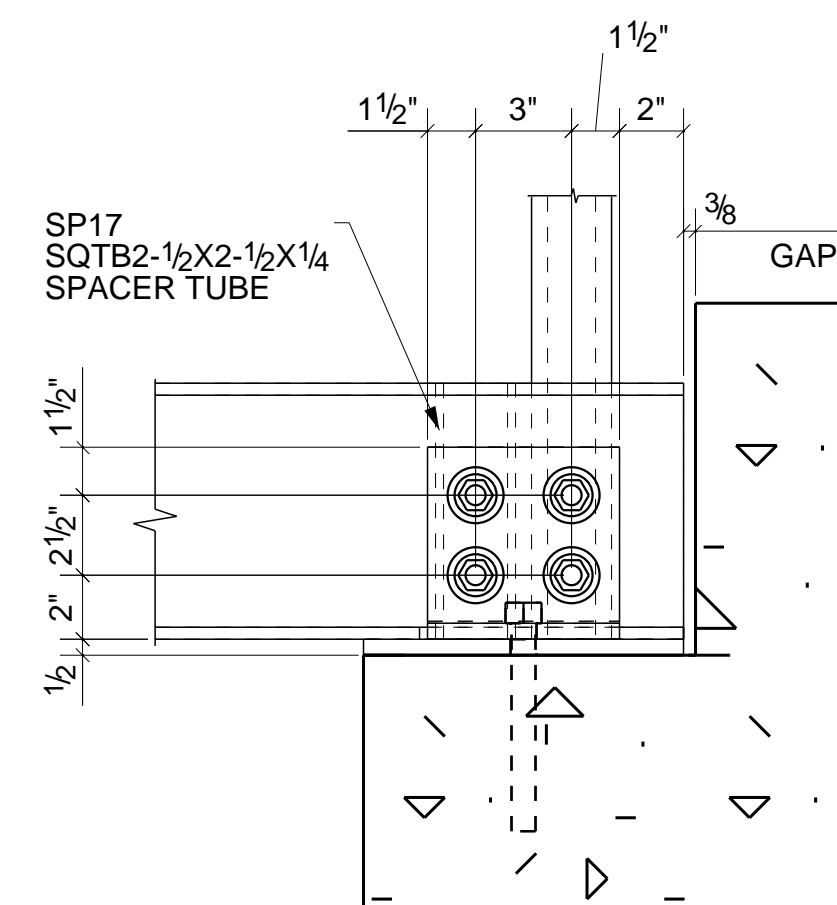


SIDE VIEW

**L**  
S4 BASE CLIP FOR C8X2 3/16X3/8 BOTTOM CHORD BEAMS

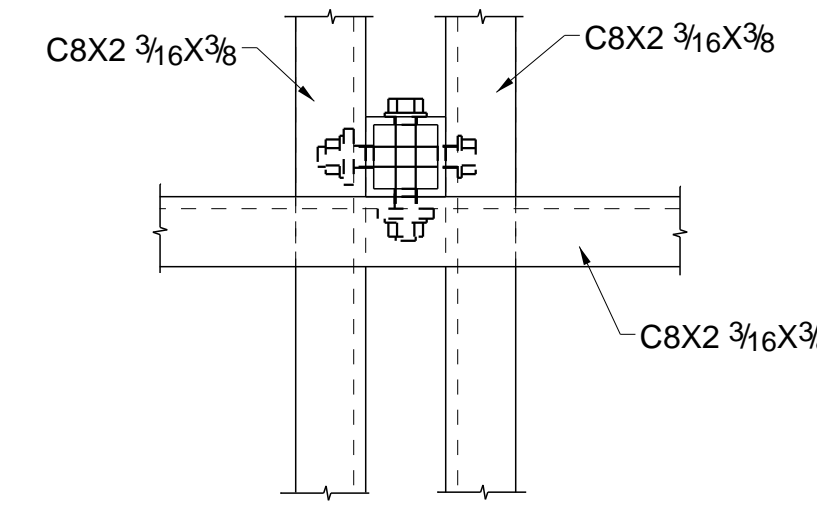


PLAN VIEW

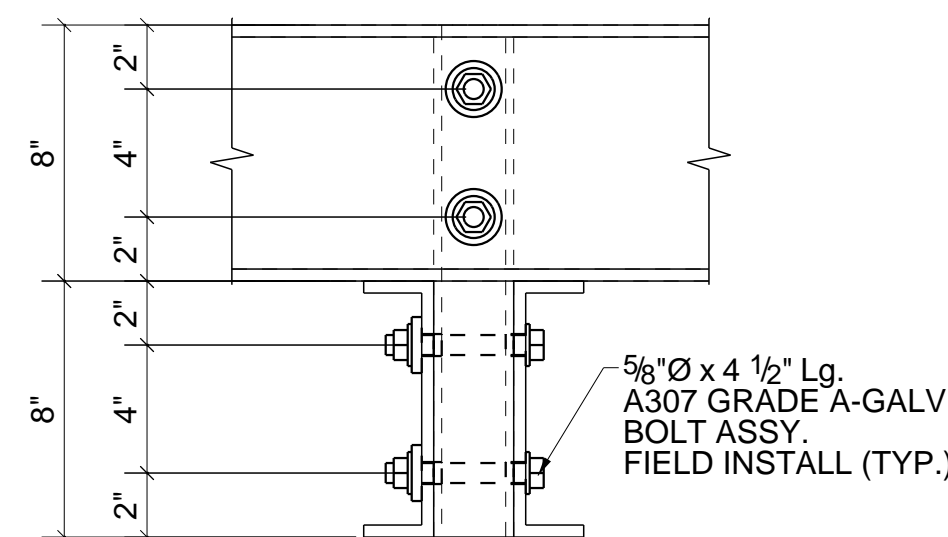


SIDE VIEW

**M**  
S4 BASE CLIP FOR C8X2 3/16X3/8 BOTTOM CHORD BEAMS

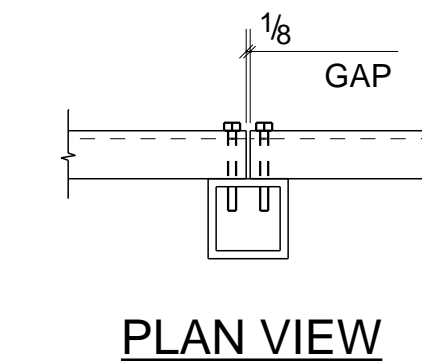


PLAN VIEW

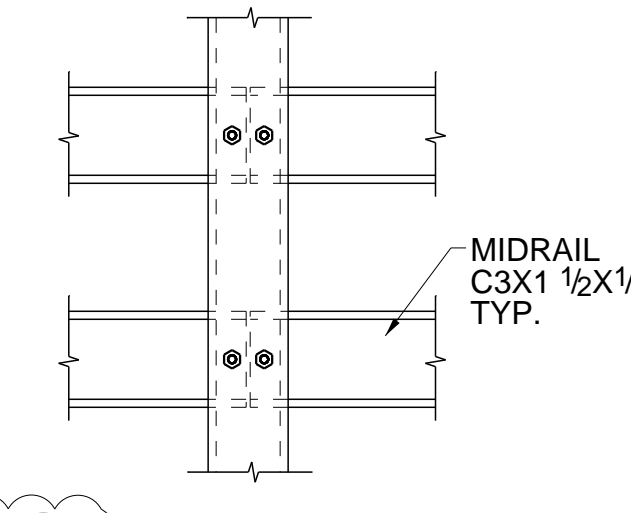


SIDE VIEW

**N**  
S4 CONNECTION FOR FLOOR BEAMS TO TRANSVERSE BEAMS

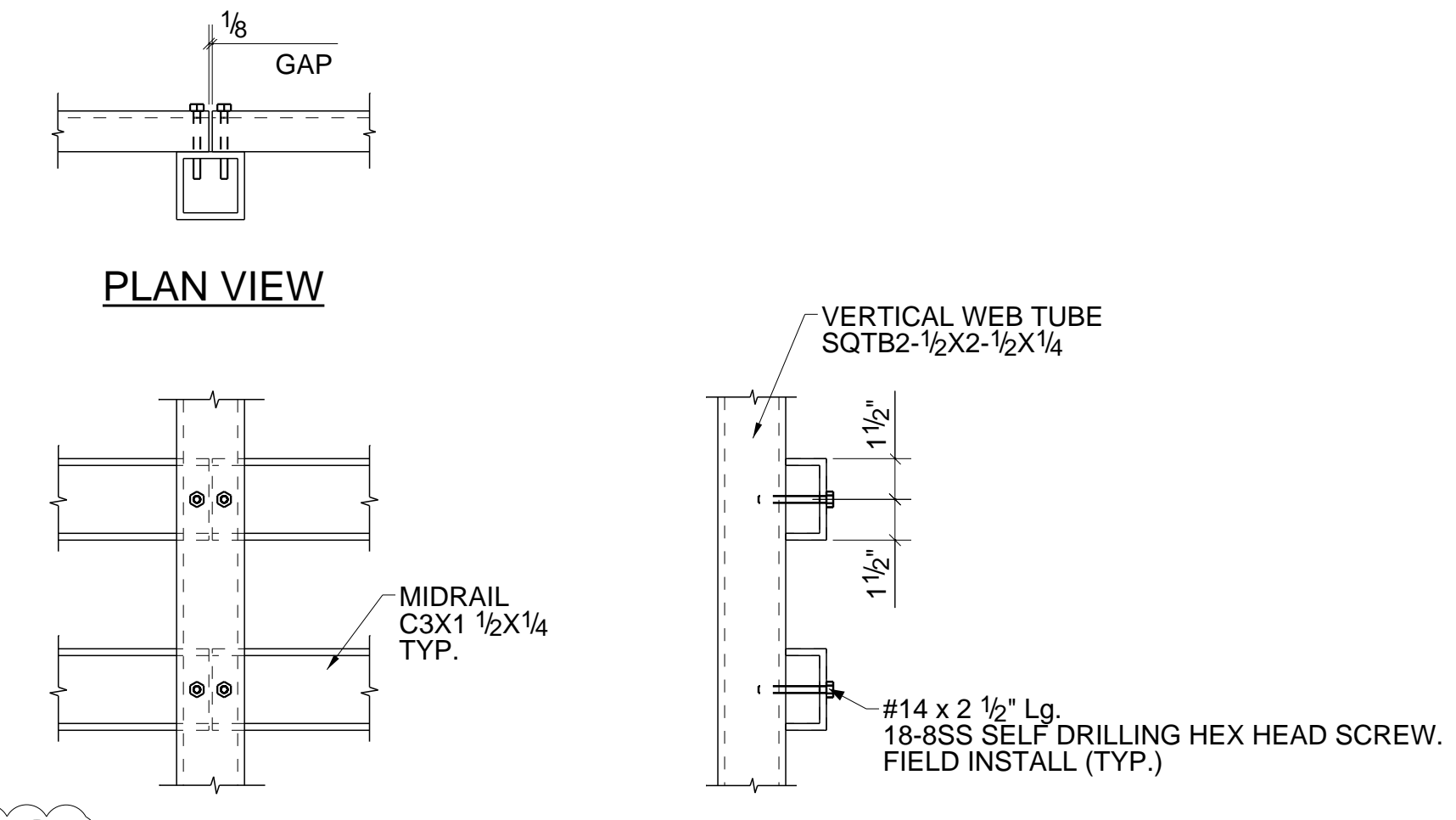
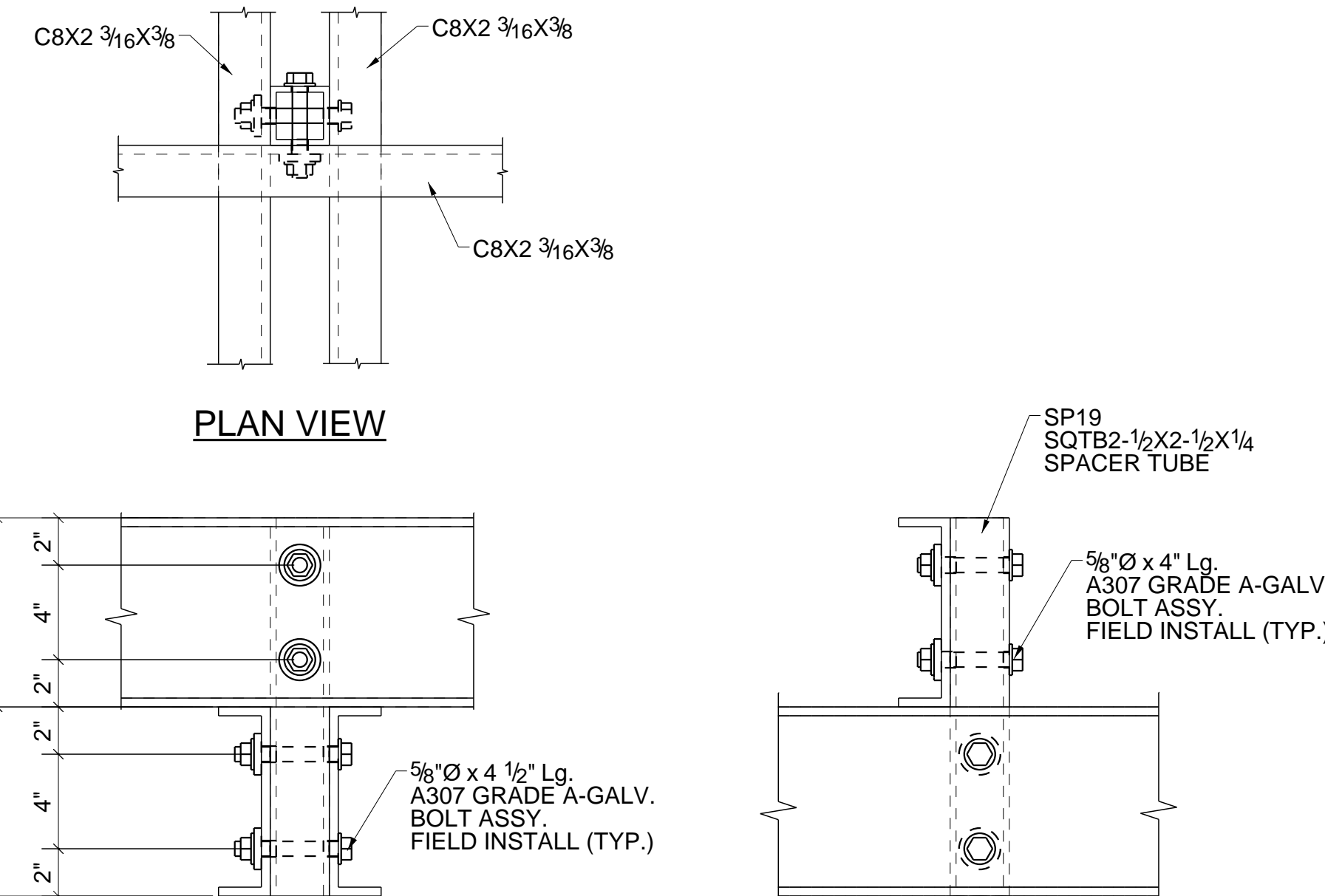
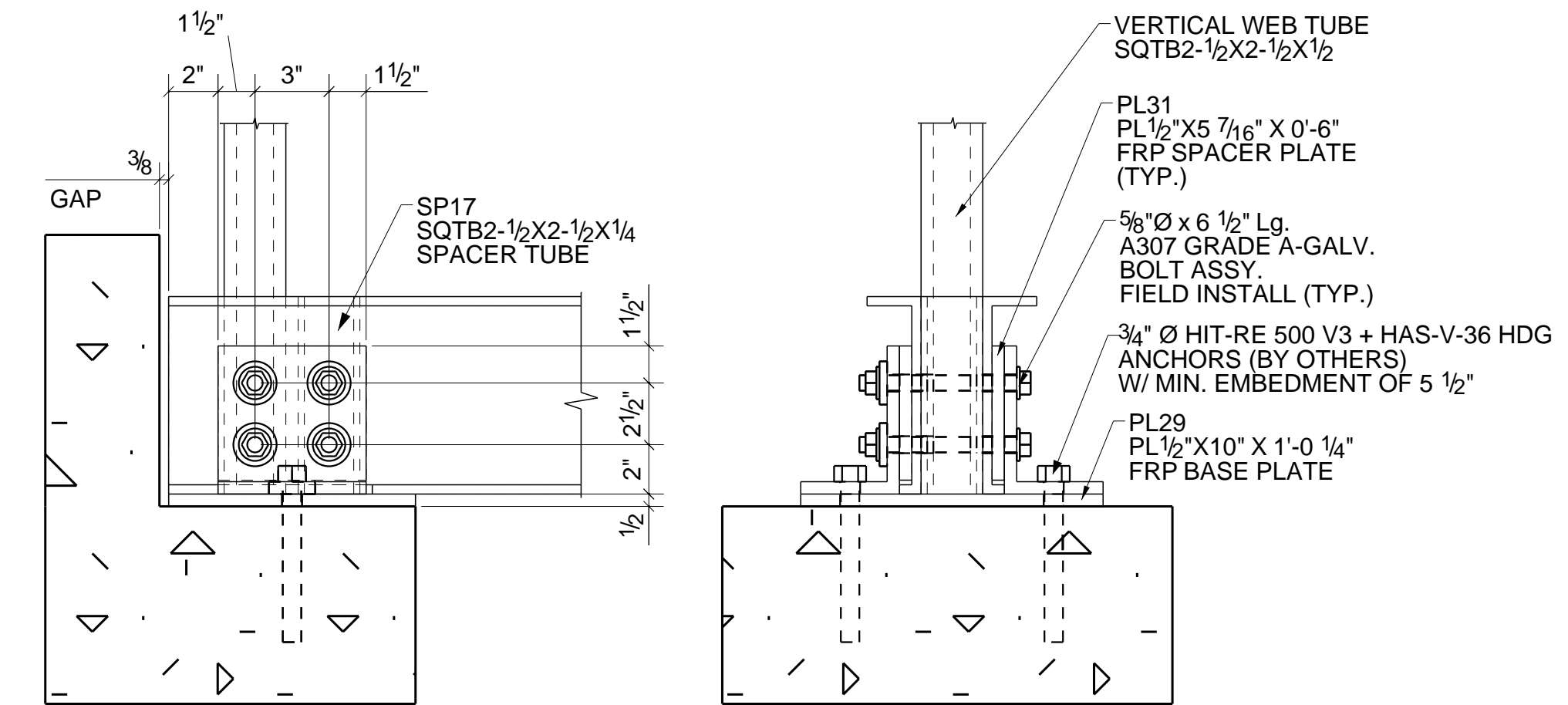
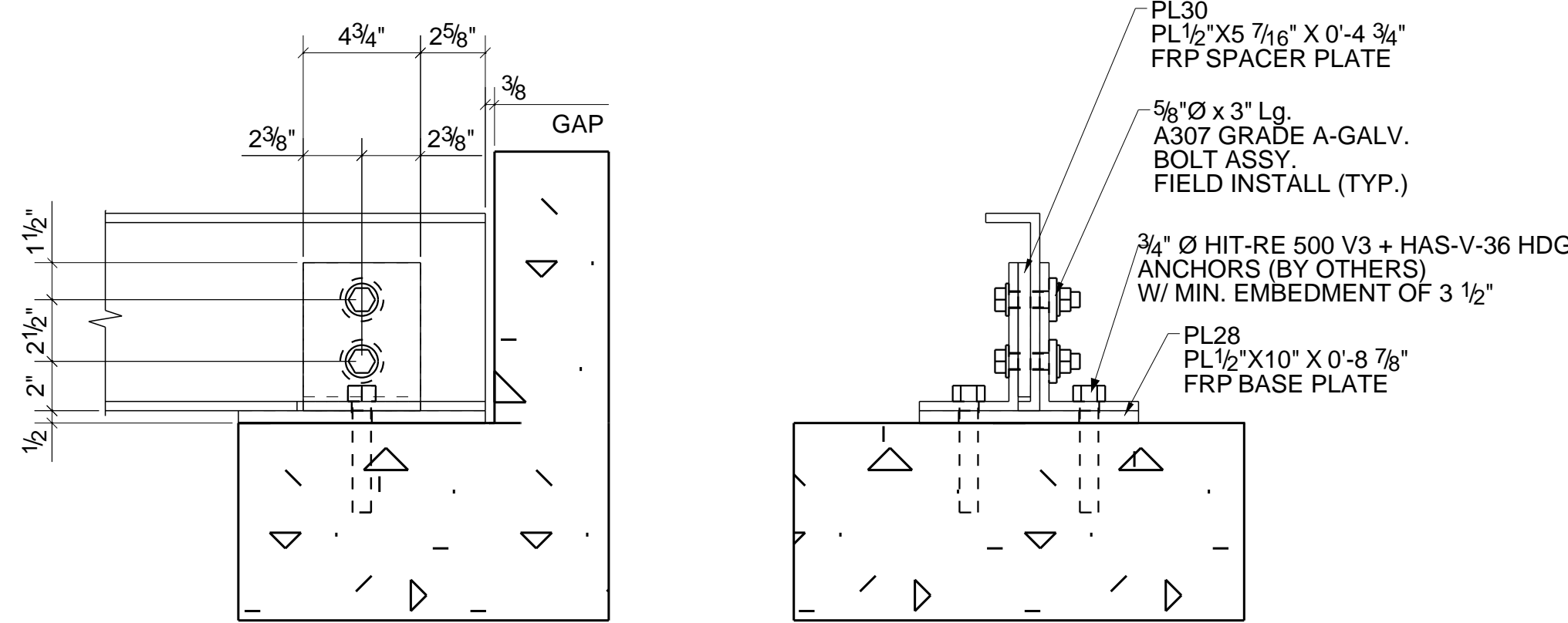
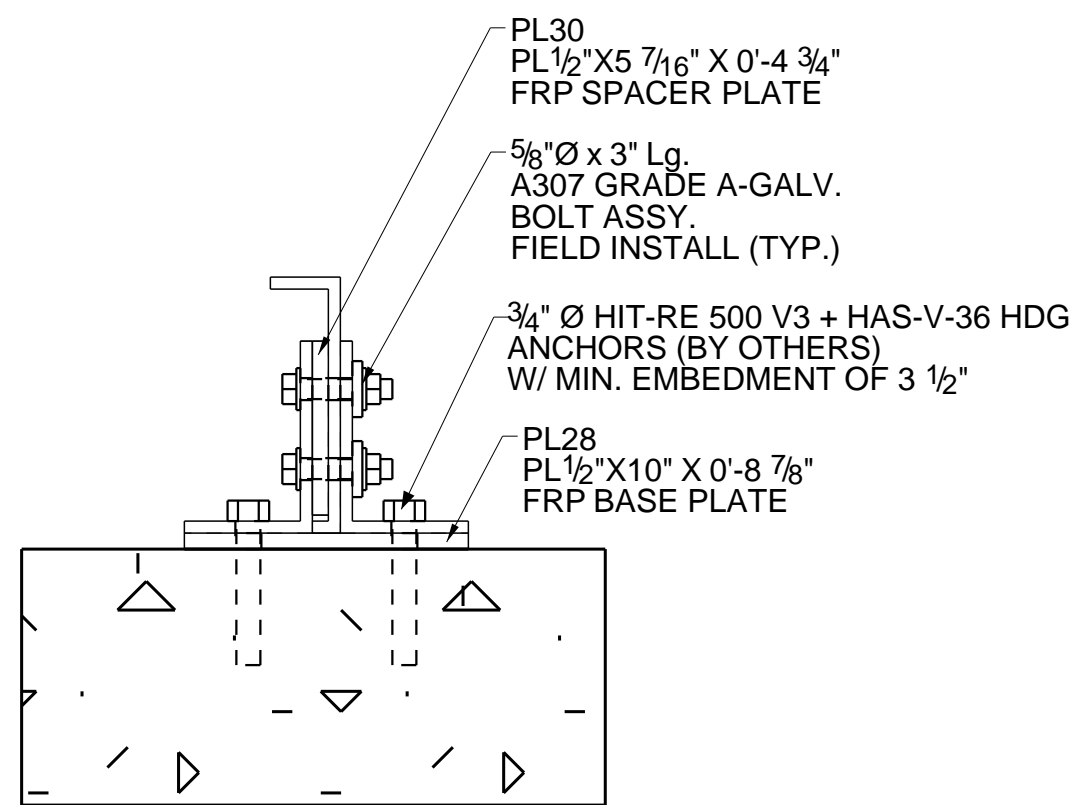


PLAN VIEW



SIDE VIEW

**O**  
S4 MID RAIL SPLICE



THIS DRAWING IS THE CONFIDENTIAL PROPERTY OF BEDFORD REINFORCED PLASTICS, INC. AND MUST NOT BE MADE PUBLIC OR COPIED, AND IS SUBJECT TO RETURN ON DEMAND. ALL RIGHTS OF INVENTION OR DESIGN ARE RESERVED.

TOLERANCES	DRAWN BY:	TITLE
X/Y: ± 1/16	VAR	
.XX: ± .030	CHECKED BY:	
	PVR	
	DESIGNED BY:	JOB
	CS	P35.4.54.GS.WD.GN
	DATE:	DRAWING NO.
	07/20/2023	S7
	REF.	SCALE
		D-SIZE
		REV
		1
		SHEET S7 OF S7

REV.	VAR	DATE	DESCRIPTION
1	VAR	08/07/2023	FOR SECOND RELEASE
0	VAR	07/20/2023	FOR FIRST RELEASE

TOLERANCES
.XXX: ± .010
ANG: ± 0.5°