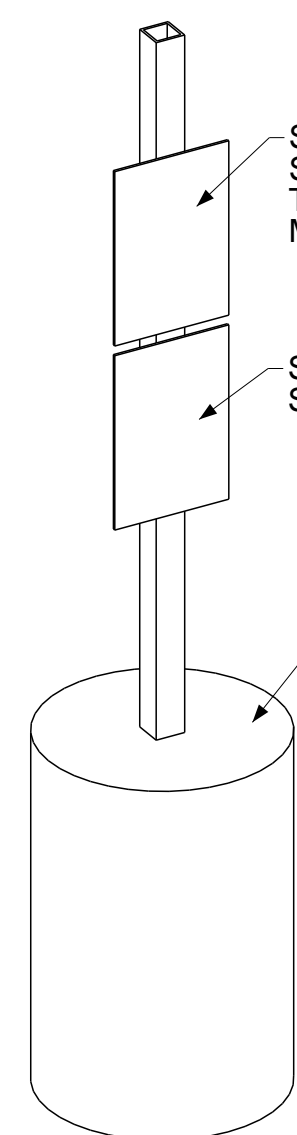


30'-0" x 4'-0" BRIDGE-ISOMETRIC VIEW

THESE SERIAL NUMBER PLATES TO BE PRE-INSTALLED AT THE FACTORY W/3/16" DIA. RIVETS.



SEE NOTE 2 FOR BRIDGE SIGN INFORMATION. THE TOP OF THE SIGN MUST BE 5' OFF OF THE GROUND.

SEE NOTE 3 FOR SPEED LIMIT SIGN INFORMATION.

CONCRETE FOUNDATION (BY OTHERS)

TOTAL DEAD WEIGHT OF EACH 30'-0" x 4'-0" BRIDGE IS EQUAL TO: 3,795 LBS. THIS DEAD WEIGHT INCLUDES THE DECKING WEIGHT OF 1,145 LBS.

BRIDGE TO BE PRE-CAMBERED TO 1/2".

FRP STRUCTURAL SHAPES :

FRP STRUCTURAL SHAPES BY BEDFORD REINFORCED PLASTICS. STANDARD GRADE POLYESTER 1-400 RESIN. COLOR TO BE OLIVE GREEN. STANDARD STRUCTURAL SHAPES ARE MANUFACTURED USING A SURFACE VEIL AS U.V. INHIBITOR TO PROTECT AGAINST U.V. DEGRADATION.

FASTENERS :

ALL HARDWARE IS A307 HD GRADE A GALVANIZED U.N.O. AT TRUSS WEB/CHORD CONNECTIONS ONLY. TIGHTEN DOWN BOLT ASSEMBLIES WITH A TORQUE WRENCH SET AT A MINIMUM AMOUNT OF 45 FT-LBS. FOR ALL OTHER CONNECTIONS OF THE BRIDGE. TIGHTEN DOWN BOLT ASSEMBLIES TO COMPRESS OR FLATTEN THE SPRING WASHERS. OVERTIGHTENED BOLTS CAN CAUSE DAMAGE TO HOLLOW PARTS.

DECKING :

3x12 PT SYP WOODEN DECKING IS TO BE PROVIDED BY BEDFORD.

NOTES:

- ALL A572 GR.50 STEEL TO BE GALVANIZED.
- POLE-MOUNTED SIGNS TO BE INSTALLED AT EACH END OF BRIDGE THAT READ "PEDESTRIAN, EQUESTRIAN AND ATV TRAFFIC ONLY".
- AN ADDITIONAL SIGN BELOW THE TOP SIGN WILL READ "SPEED LIMIT 5".
- THE VERTICAL TRUSSES ARE NOT RATED TO WITHSTAND LATERAL VEHICULAR IMPACT.

PEDESTRIAN,  
EQUESTRIAN AND  
ATV TRAFFIC ONLY

SPEED  
LIMIT  
5

SIGN EXAMPLE

- REVISE AND RESUBMIT
- APPROVED AS NOTED
- APPROVED

SIGNATURE \_\_\_\_\_ DATE \_\_\_\_\_

BRIDGE PARTS BILL-OF-MATERIAL (BOM)

P/N	QTY.	DESCRIPTION	LENGTH
AN17	16	L4X4X1/2 FRP ANGLE	0'-6"
B278	2	CBK2 3/16X3/8 FRP TOP CHORD BEAM	30'-0"
B279	2	CBK2 3/16X3/8 FRP CAP BEAM	30'-0"
B280	1	CBK2 3/16X3/8 FRP BOTTOM CHORD BEAM	30'-0"
B281	1	CBK2 3/16X3/8 FRP FLOOR BEAM	30'-0"
B282	1	CBK2 3/16X3/8 FRP BOTTOM CHORD BEAM	30'-0"
B283	2	CBK2 3/16X3/8 FRP TOP CHORD BEAM	30'-0"
B284	1	CBK2 3/16X3/8 FRP BOTTOM CHORD BEAM	30'-0"
B285	1	CBK2 3/16X3/8 FRP BOTTOM CHORD BEAM	30'-0"
BR13	4	SQT82-1/2X2-1/2X1/2 FRP DIAGONAL WEB TUBE	6'-8 1/2"
BR14	2	SQT82X2X1/4 FRP HORIZONTAL BRACE	6'-5 13/16"
BR15	10	SQT82-1/2X2-1/2X1/4 FRP OUTRIGGER BRACING	6'-3 3/8"
BR17	8	SQT82-1/2X2-1/2X1/4 FRP DIAGONAL WEB TUBE	6'-10 7/8"
BR82	4	SQT82X2X1/4 FRP HORIZONTAL BRACE	6'-9 13/16"
ETFB_9	2	CBK2 3/16X3/8 FRP BEAM	2'-2 11/16"
ETFB_10	2	CBK2 3/16X3/8 FRP BEAM	2'-0 11/16"
GUST_1	20	PL3/8"X6 13/16" FRP GUSSET PLATE	0'-7"
LTB_5	5	CBK2 3/16X3/8 FRP TRANSVERSE BEAM	11'-8"
LTB_6	5	CBK2 3/16X3/8 FRP TRANSVERSE BEAM	11'-8"
MR78	24	CX1 1/2X1/4 FRP MDRAIL	14'-9 11/16"
P8	2	SQT83X3X1/4 FRP SIGN POST	8'-0"
P16	2	SQT82-1/2X2-1/2X1/2 FRP VERTICAL WEB TUBE	5'-4 1/2"
P17	1	SQT82-1/2X2-1/2X1/2 FRP VERTICAL WEB TUBE	5'-4 1/2"
P18	8	SQT82-1/2X2-1/2X1/4 FRP VERTICAL WEB TUBE	6'-0 1/2"
P19	1	SQT82-1/2X2-1/2X1/2 FRP VERTICAL WEB TUBE	5'-4 1/2"
P20	2	SQT82-1/2X2-1/2X1/4 FRP VERTICAL WEB TUBE	6'-0 1/2"
PL28	2	PL1/2"X10" FRP BASE PLATE	0'-8 7/8"
PL29	4	PL1/2"X10" FRP BASE PLATE	1'-0 1/4"
PL30	2	PL1/2"X5 7/16" FRP SPACER PLATE	0'-4 3/4"
PL31	8	PL1/2"X5 7/16" FRP SPACER PLATE	0'-6"
SP17	4	SQT82-1/2X2-1/2X1/4 FRP SPACER TUBE	0'-8"
SP18	8	SQT82-1/2X2-1/2X1/4 FRP SPACER TUBE	0'-8"
SP19	5	SQT82-1/2X2-1/2X1/4 FRP SPACER TUBE	1'-4"
DECK36	2	3X12 PT SYP WOOD DECKBOARD	4'-5"
DECK51	30	3X12 PT SYP WOOD DECKBOARD	4'-5"
P_BRKT_5	2	L6X4X3/8 A572 GR.50 GALV. ANGLE	0'-4 3/4"
P_BRKT_6	2	L6X4X3/8 A572 GR.50 GALV. ANGLE	0'-4 3/4"
P_BRKT_7	4	L6X4X1/2 A572 GR.50 GALV. ANGLE	0'-6"
P_BRKT_8	4	L6X4X1/2 A572 GR.50 GALV. ANGLE	0'-6"

HARDWARE BOM

QTY.	DIA.	DESCRIPTION	LENGTH
30	1/2"	BOLT A307 GRADE A-GALV.	0'-3 1/2"
24	3/8"	BOLT A307 GRADE A-GALV.	0'-2 1/2"
60	3/8"	BOLT A307 GRADE A-GALV.	0'-4 1/2"
16	3/8"	BOLT A307 GRADE A-GALV.	0'-5"
4	5/8"	BOLT A307 GRADE A-GALV.	0'-3"
150	5/8"	BOLT A307 GRADE A-GALV.	0'-4 1/2"
10	5/8"	BOLT A307 GRADE A-GALV.	0'-4"
16	5/8"	BOLT A307 GRADE A-GALV.	0'-6 1/2"
80	3/8"	BOLT CRGE. A307 GRADE A-GALV.	0'-2"
96	#14	18-8SS SELF DRILLING HEX HEAD SCREW	0'-2 1/2"
192	#14	18-8SS SELF DRILLING FLAT HEADED SCREW	0'-4"
30	1/2"	NUT HEX	-
180	3/8"	NUT HEX	-
180	5/8"	NUT HEX	-
30	1/2"	WASHER PLAIN	-
280	3/8"	WASHER PLAIN	-
360	5/8"	WASHER PLAIN	-
30	1/2"	WASHER SPRING	-
100	3/8"	WASHER SPRING	-
180	5/8"	WASHER SPRING	-

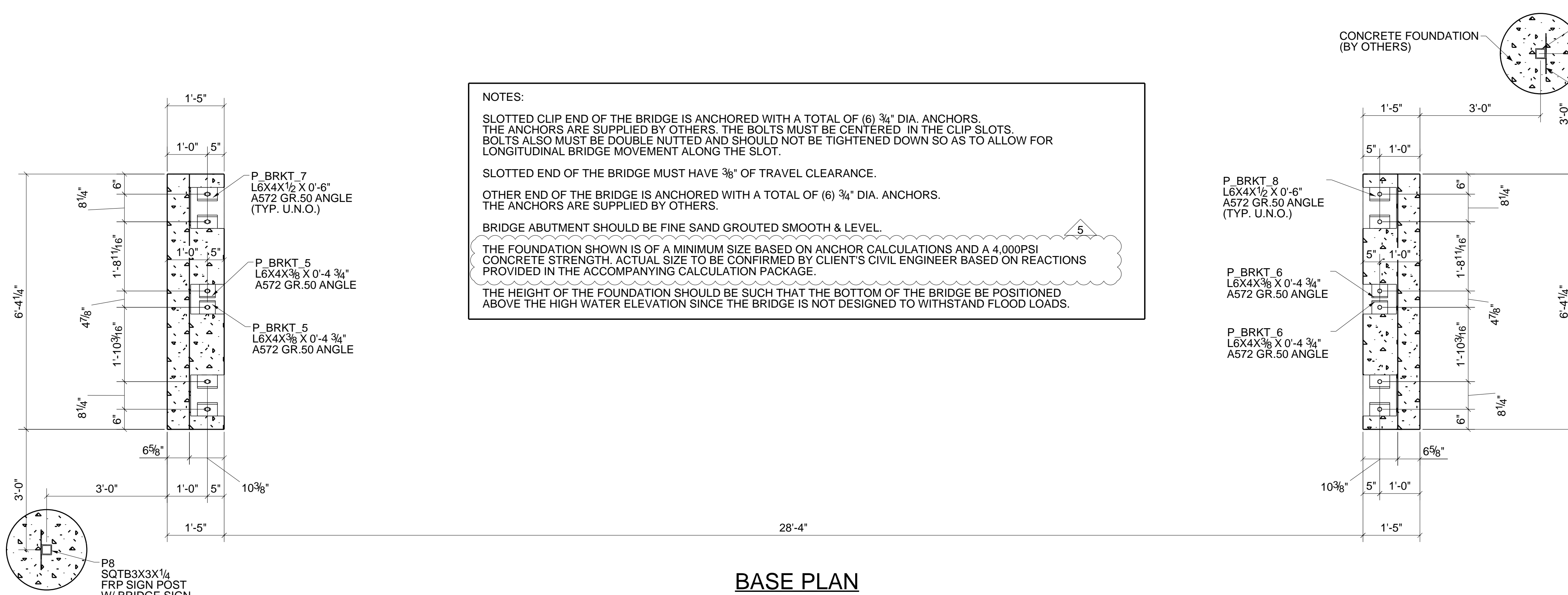


THIS DRAWING IS THE CONFIDENTIAL PROPERTY OF BEDFORD REINFORCED PLASTICS, INC. AND MUST NOT BE MADE PUBLIC OR COPIED, AND IS SUBJECT TO RETURN ON DEMAND. ALL RIGHTS OF INVENTION OR DESIGN ARE RESERVED.

TOLERANCES	DRAWN	TITLE
X/Y: ± 1/16	CHECKED SKE	JOB P30.4.54.GS.WD.GN
.XX: ± .030	PVR	
.XXX: ± .010	APPROVED	
ANG: ± 0.5°	DATE: 06/12/2023	DRAWING NO. S1
	REF.	SCALE D-SIZE
		REV. 5

REV.	BY	DATE	DESCRIPTION	REV.	BY	DATE	DESCRIPTION
5	SKE	06/12/2023	FOR SIXTH RELEASE	4	SKE	06/09/2023	FOR FIFTH RELEASE
3	BSH	05/10/2023	FOR FOURTH RELEASE	2	VAR	04/19/2023	FOR THIRD RELEASE
1	VAR	02/14/2023	FOR SECOND RELEASE	0	VAR	02/02/2023	FOR FIRST RELEASE

T-TRUSS STRUCTURE



**NOTES:**

SLOTTED CLIP END OF THE BRIDGE IS ANCHORED WITH A TOTAL OF (6) 3/4" DIA. ANCHORS. THE ANCHORS ARE SUPPLIED BY OTHERS. THE BOLTS MUST BE CENTERED IN THE SLOT SLOTS. BOLTS ALSO MUST BE DOUBLE NUTTED AND SHOULD NOT BE TIGHTENED DOWN SO AS TO ALLOW FOR LONGITUDINAL BRIDGE MOVEMENT ALONG THE SLOT.

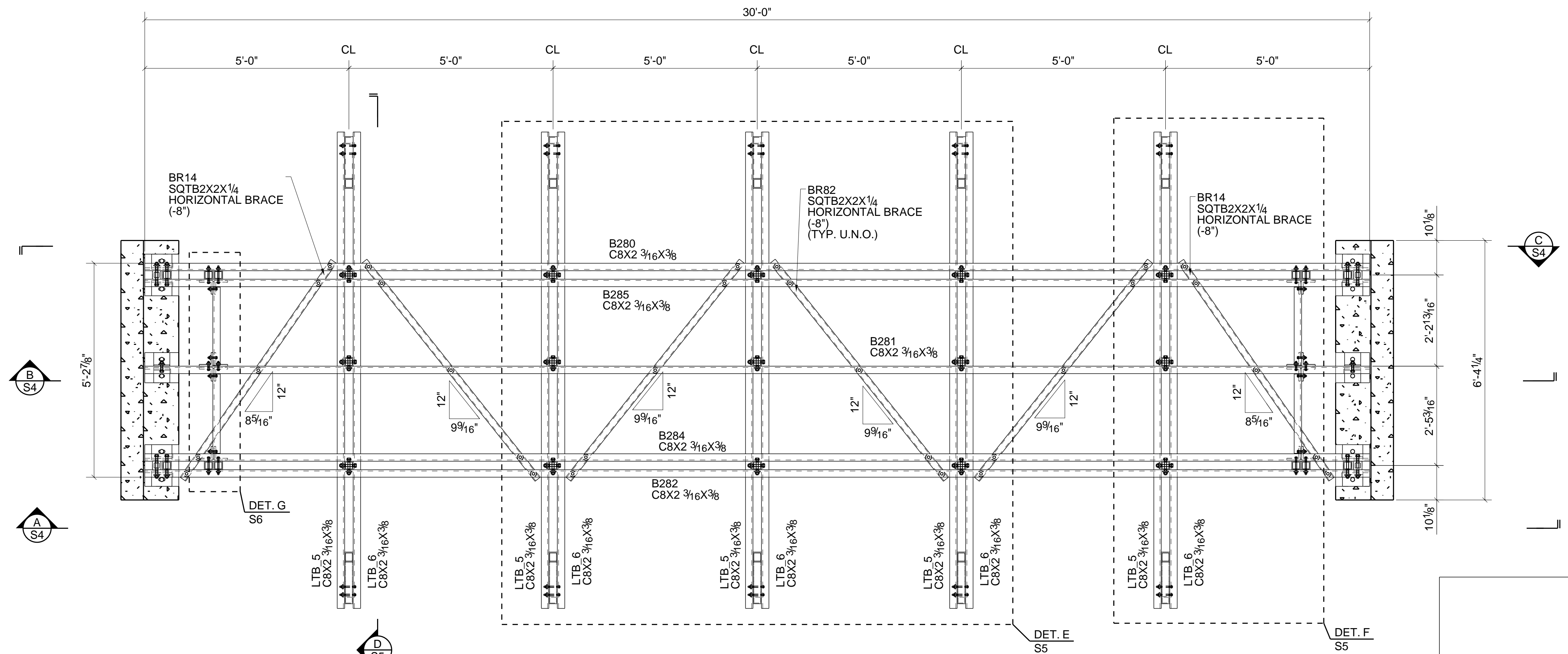
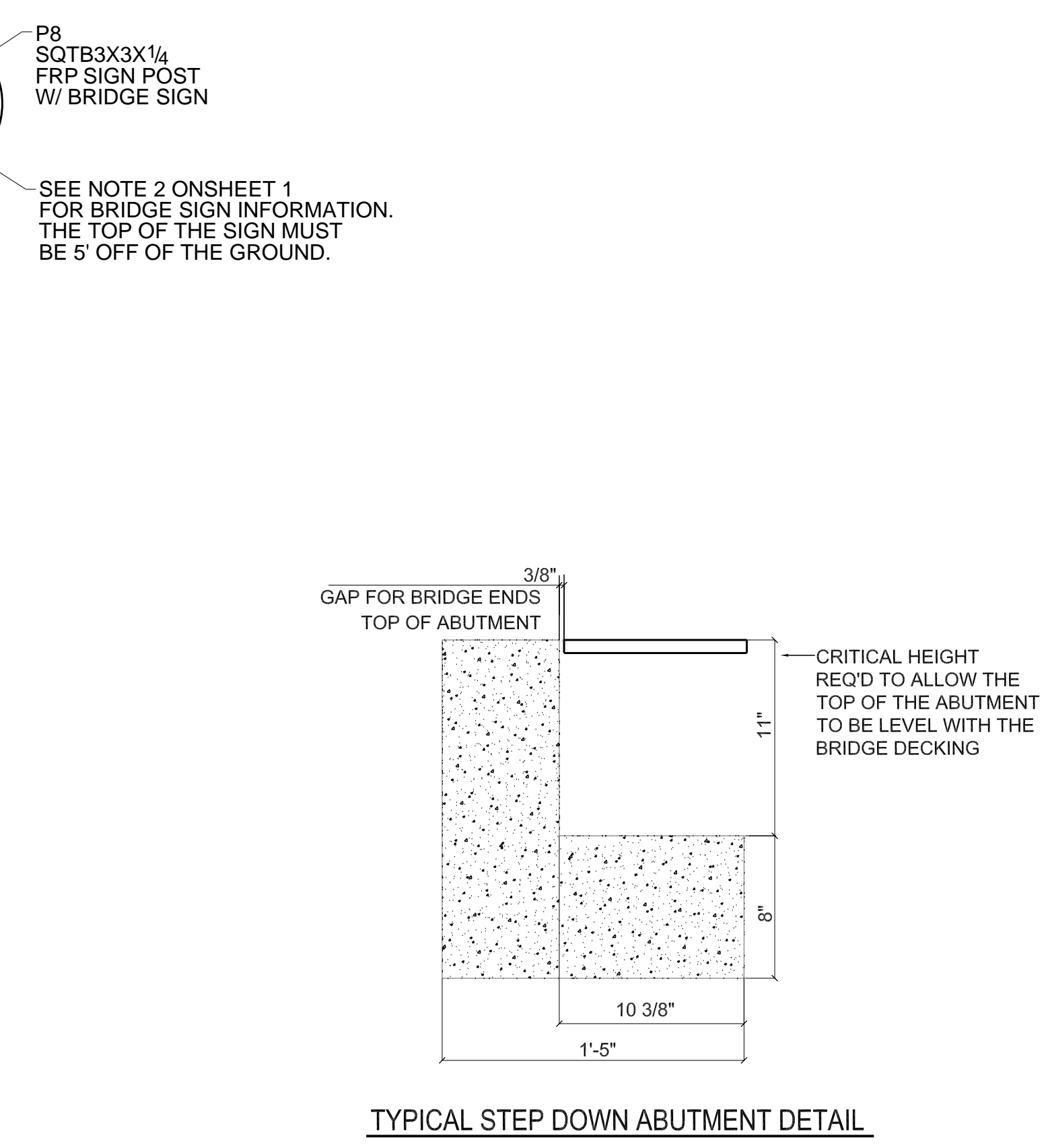
SLOTTED END OF THE BRIDGE MUST HAVE 3/8" OF TRAVEL CLEARANCE.

OTHER END OF THE BRIDGE IS ANCHORED WITH A TOTAL OF (6) 3/4" DIA. ANCHORS. THE ANCHORS ARE SUPPLIED BY OTHERS.

BRIDGE ABUTMENT SHOULD BE FINE SAND GROUTED SMOOTH & LEVEL.

THE FOUNDATION SHOWN IS OF A MINIMUM SIZE BASED ON ANCHOR CALCULATIONS AND A 4,000PSI CONCRETE STRENGTH. ACTUAL SIZE TO BE CONFIRMED BY CLIENT'S CIVIL ENGINEER BASED ON REACTIONS PROVIDED IN THE ACCOMPANYING CALCULATION PACKAGE.

THE HEIGHT OF THE FOUNDATION SHOULD BE SUCH THAT THE BOTTOM OF THE BRIDGE BE POSITIONED ABOVE THE HIGH WATER ELEVATION SINCE THE BRIDGE IS NOT DESIGNED TO WITHSTAND FLOOD LOADS.



Since 1974

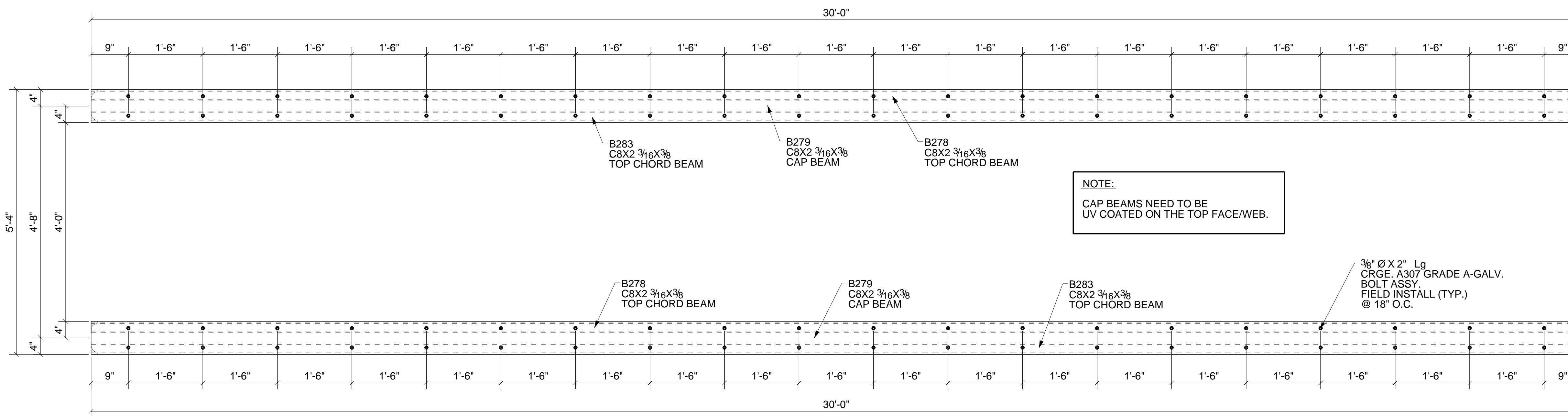
THIS DRAWING IS THE CONFIDENTIAL PROPERTY OF BEDFORD REINFORCED PLASTICS, INC. AND MUST NOT BE MADE PUBLIC OR COPIED, AND IS SUBJECT TO RETURN ON DEMAND. ALL RIGHTS OF INVENTION OR DESIGN ARE RESERVED.

TOLERANCES	DRAWN	SKE	TITLE
X/Y: ± 1/16	CHECKED	PVR	
.XX: ± .030	APPROVED		JOB
.XXX: ± .010	DATE:	06/12/2023	DRAWING NO. S2
ANG: ± 0.5°	REF.		SCALE
			REV. 5

P30.4.54.GS.WD.GN  
D-SIZE  
SHEET S2 OF S7

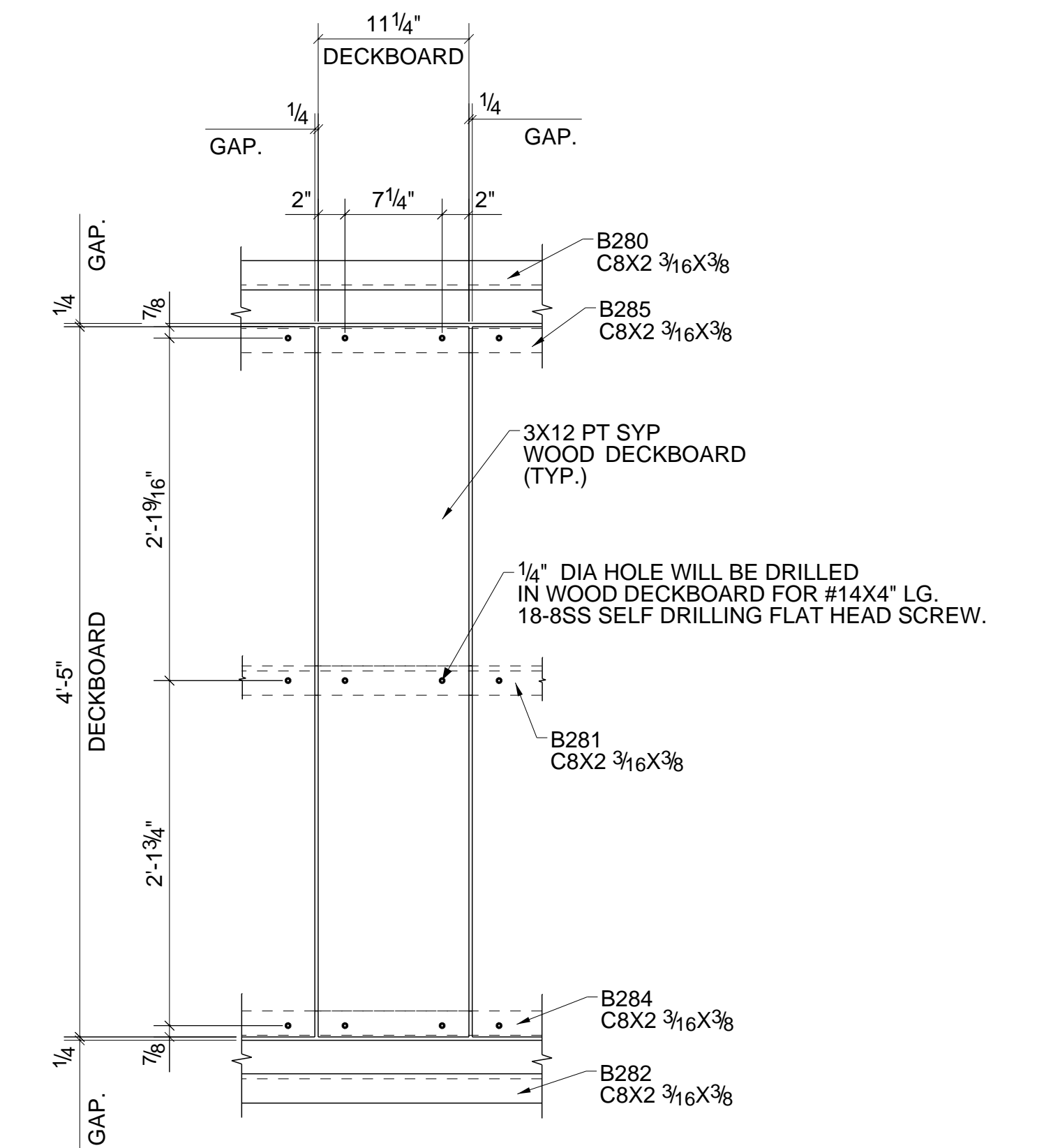
5	SKE	06/12/2023	FOR SIXTH RELEASE	4	SKE	06/09/2023	FOR FIFTH RELEASE
3	BSH	05/10/2023	FOR FOURTH RELEASE	2	VAR	04/19/2023	FOR THIRD RELEASE
1	VAR	02/14/2023	FOR SECOND RELEASE	0	VAR	02/02/2023	FOR FIRST RELEASE
REV.	BY	DATE	DESCRIPTION	REV.	BY	DATE	DESCRIPTION

Terra Structures

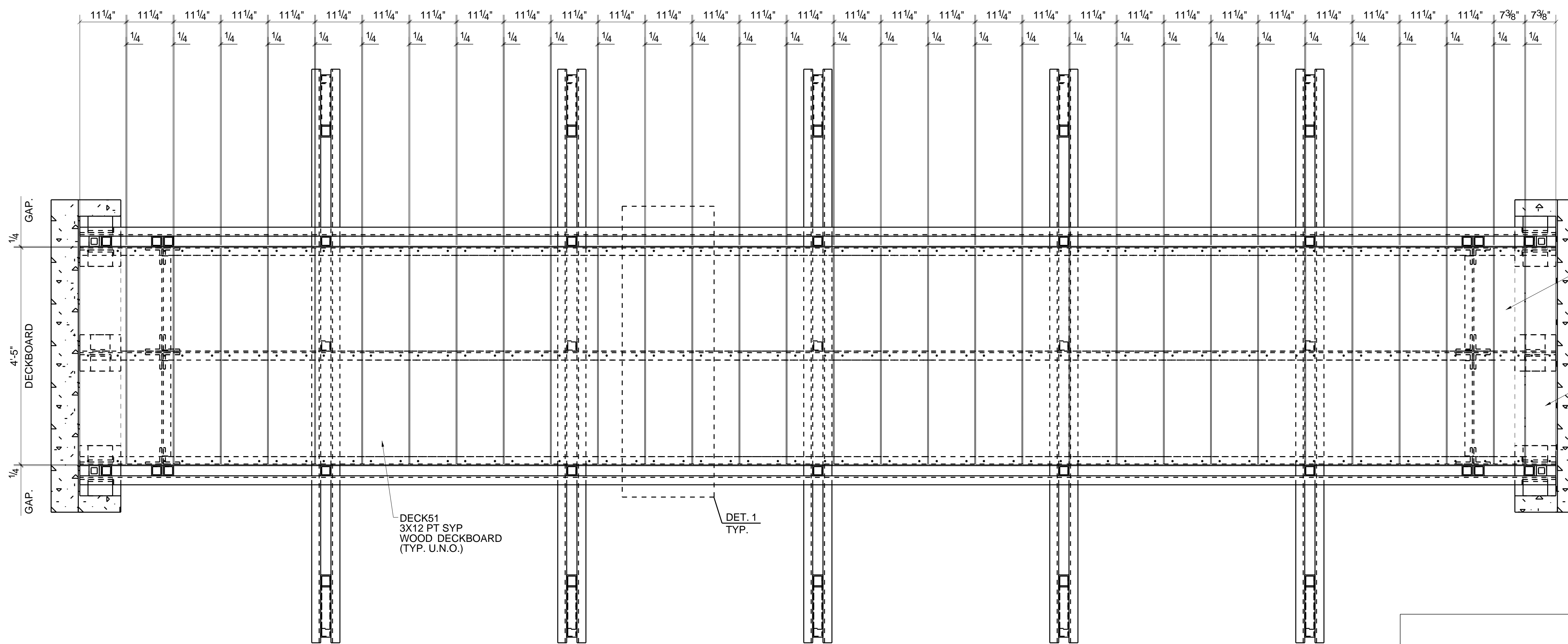


TOP CHORD PLAN

NOTE:  
CAP BEAMS NEED TO BE  
UV COATED ON THE TOP FACE/WEB.



DETAIL 1  
TYPICAL 3X12 PT SYP WOODEN DECKBOARD DETAIL



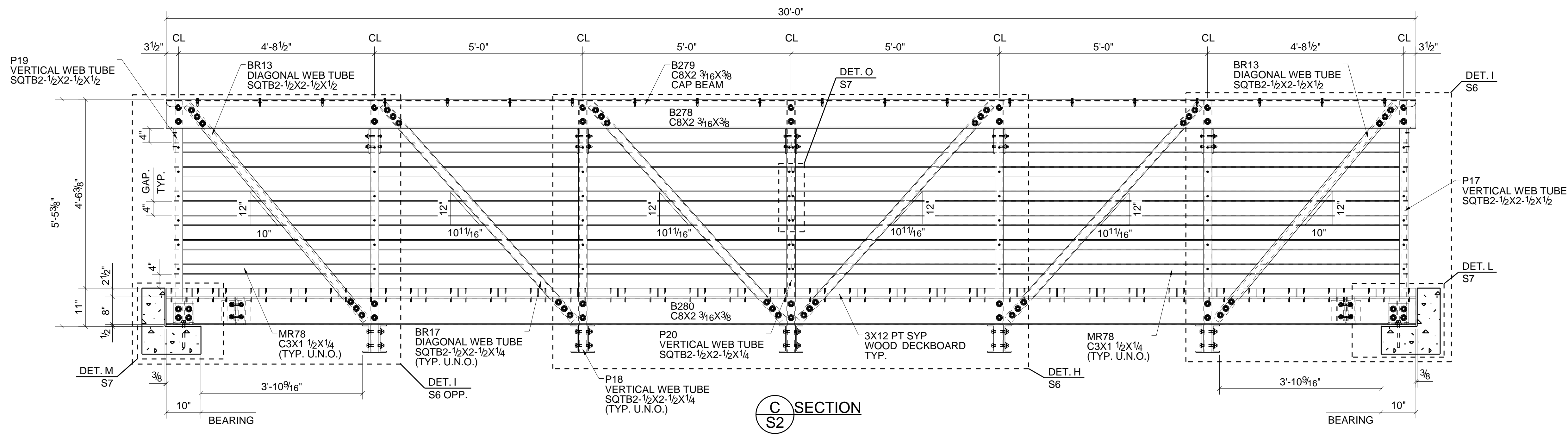
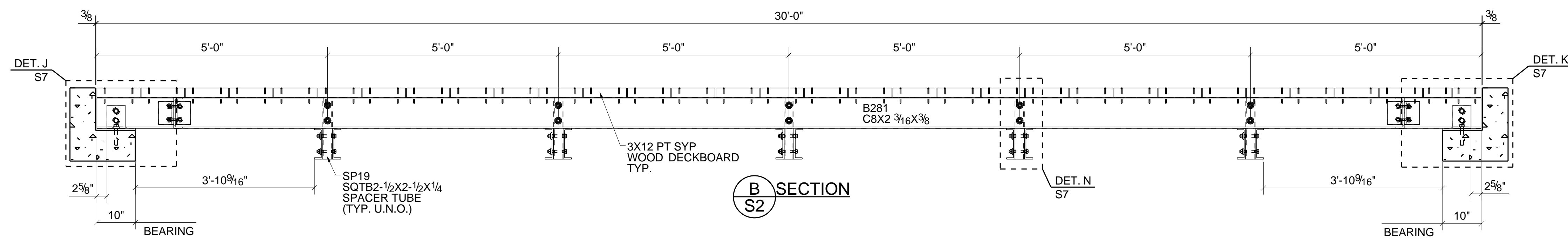
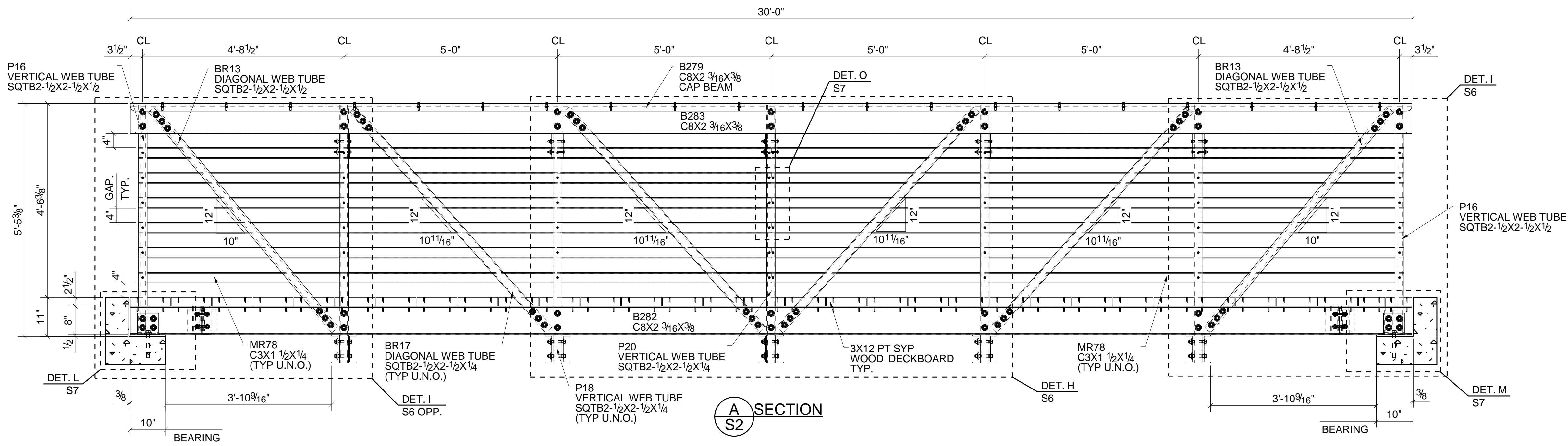
DECKING PLAN



THIS DRAWING IS THE CONFIDENTIAL PROPERTY OF BEDFORD REINFORCED PLASTICS, INC. AND MUST NOT BE MADE PUBLIC OR COPIED, AND IS SUBJECT TO RETURN ON DEMAND. ALL RIGHTS OF INVENTION OR DESIGN ARE RESERVED.

TOLERANCES	DRAWN	TITLE
X/Y: ± 1/16	SKE	
.XX: ± .030	CHECKED	
.XXX: ± .010	PVR	
ANG: ± 0.5°	APPROVED	
	DATE: 06/12/2023	DRAWING NO. S3
	REF.	SCALE
		JOB: P30.4.54.GS.WD.GN
		D-SIZE
		REV. 5
		SHEET S3 OF S7

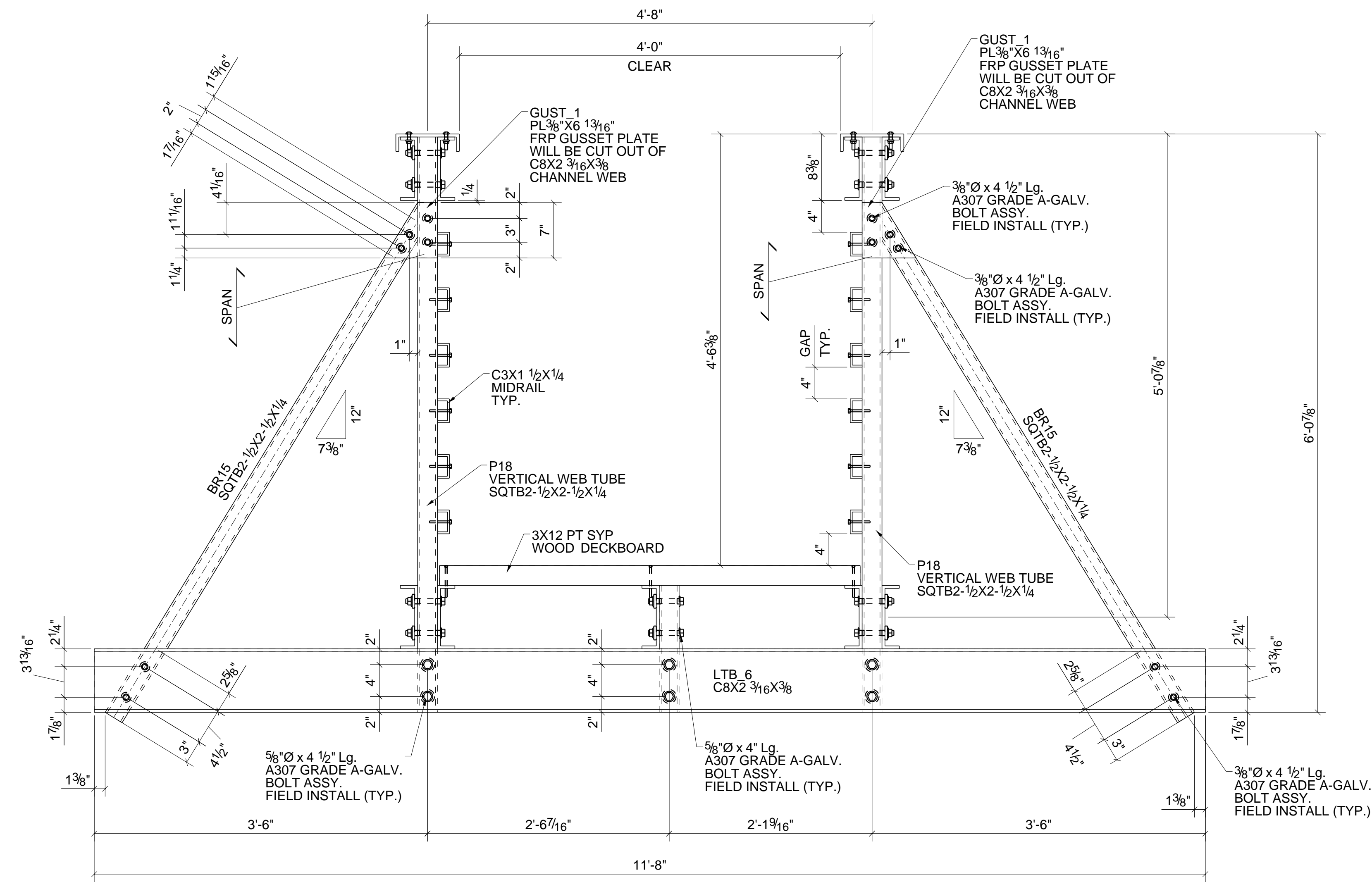
REV.	BY	DATE	DESCRIPTION	REV.	BY	DATE	DESCRIPTION
5	SKE	06/12/2023	FOR SIXTH RELEASE	4	SKE	06/09/2023	FOR FIFTH RELEASE
3	BSH	05/10/2023	FOR FOURTH RELEASE	2	VAR	04/19/2023	FOR THIRD RELEASE
1	VAR	02/14/2023	FOR SECOND RELEASE	0	VAR	02/02/2023	FOR FIRST RELEASE



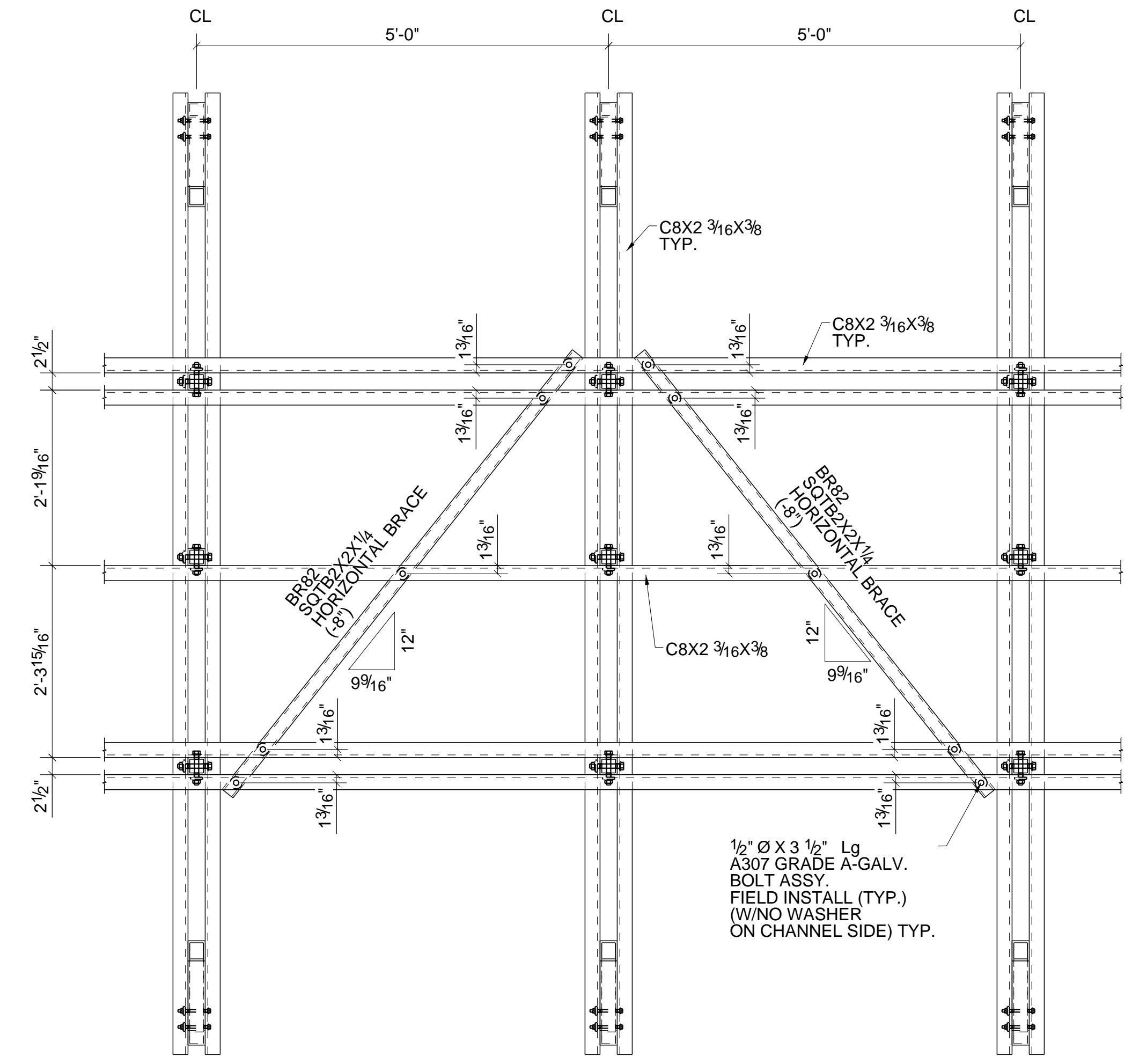
THIS DRAWING IS THE CONFIDENTIAL PROPERTY OF BEDFORD REINFORCED PLASTICS, INC. AND MUST NOT BE MADE PUBLIC OR COPIED, AND IS SUBJECT TO RETURN ON DEMAND. ALL RIGHTS OF INVENTION OR DESIGN ARE RESERVED.

TOLERANCES	DRAWN	TITLE
X/Y: ± 1/16	SKE	
.XX: ± .030	CHECKED	
.XXX: ± .010	PVR	
ANG: ± 0.5°	APPROVED	
	DATE: 06/12/2023	DRAWING NO. S4
	REF.	SCALE
		JOB P30.4.54.GS.WD.GN
		D-SIZE
		REV. 5 SHEET S4 OF S7

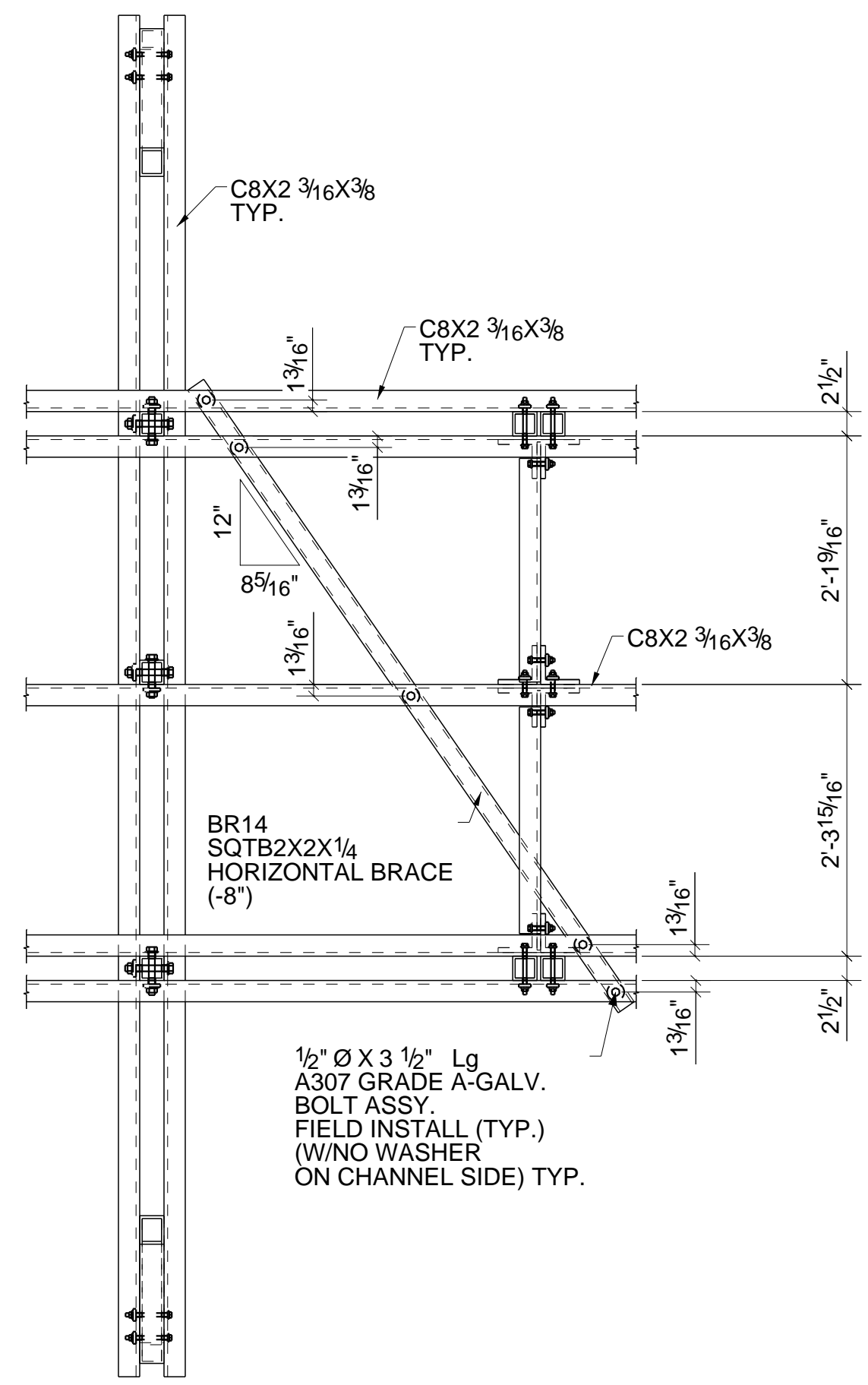
REV.	BY	DATE	DESCRIPTION	REV.	BY	DATE	DESCRIPTION
5	SKE	06/12/2023	FOR SIXTH RELEASE	4	SKE	06/09/2023	FOR FIFTH RELEASE
3	BSH	05/10/2023	FOR FOURTH RELEASE	2	VAR	04/19/2023	FOR THIRD RELEASE
1	VAR	02/14/2023	FOR SECOND RELEASE	0	VAR	02/02/2023	FOR FIRST RELEASE



**D SECTION**  
S2



**E DETAIL**  
S2 FOR SQT B2X2X1/4 HORIZONTAL BRACE



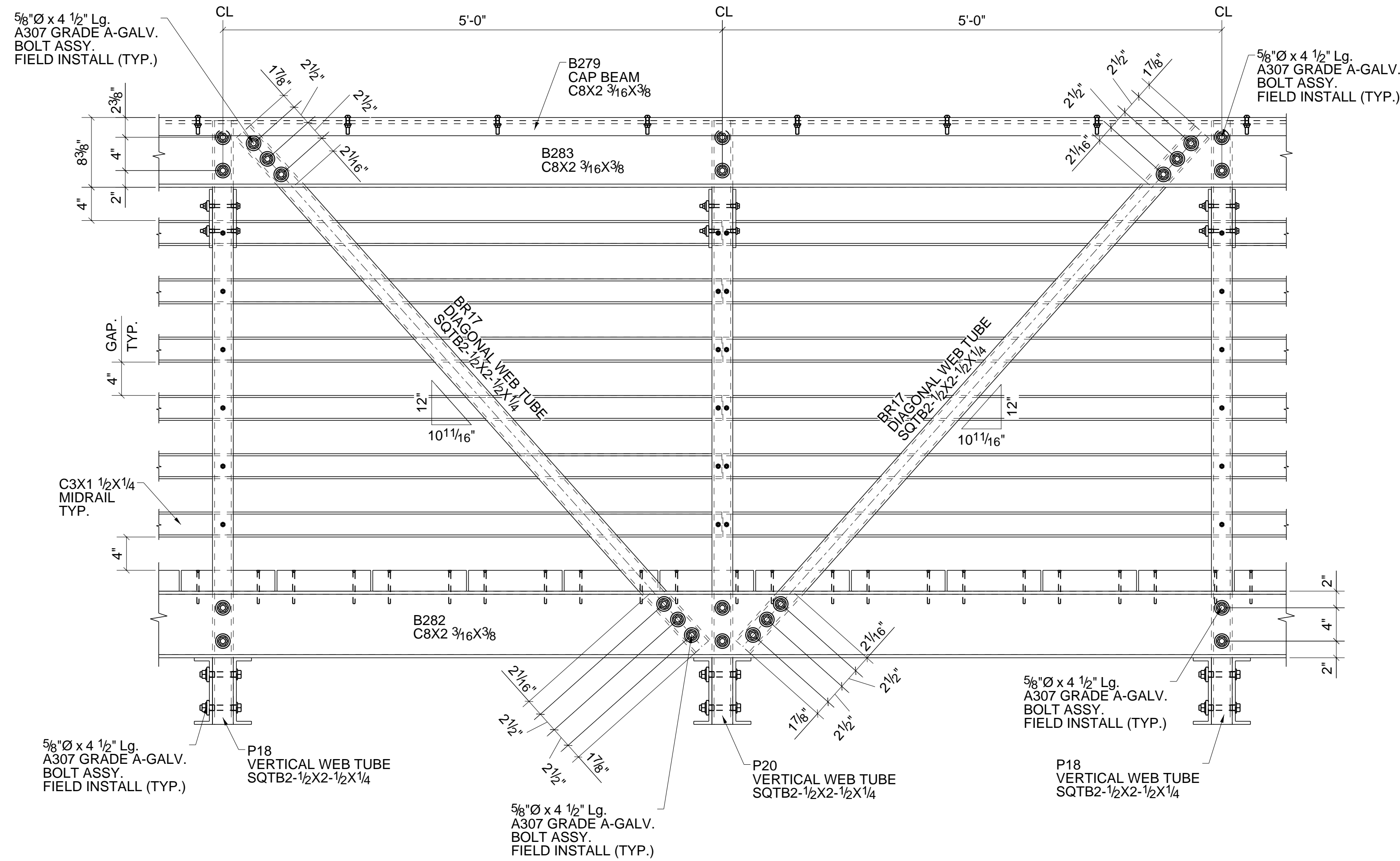
**F DETAIL**  
S2 FOR SQT B2X2X1/4 END HORIZONTAL BRACE



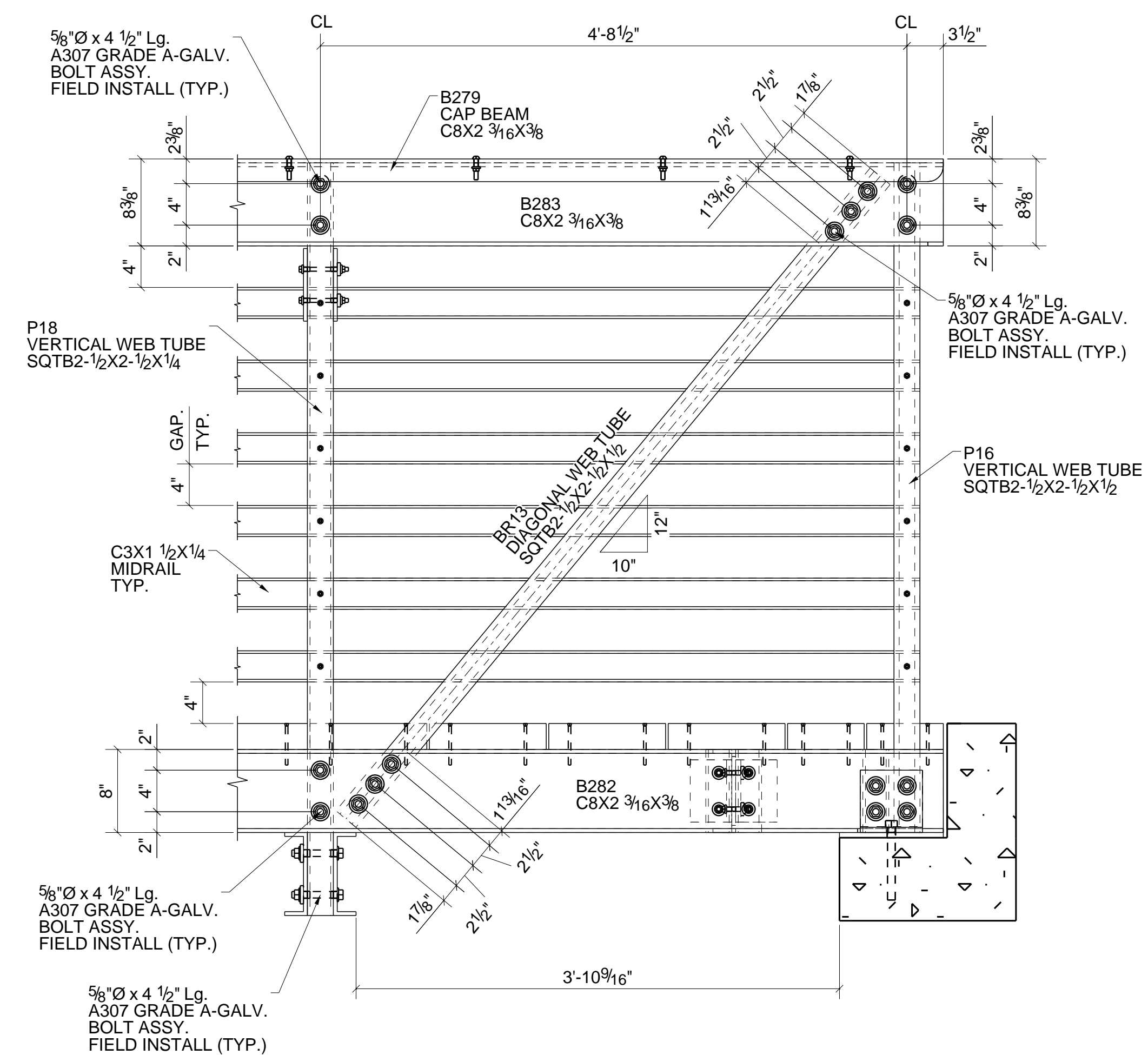
THIS DRAWING IS THE CONFIDENTIAL PROPERTY OF BEDFORD REINFORCED PLASTICS, INC. AND MUST NOT BE MADE PUBLIC OR COPIED, AND IS SUBJECT TO RETURN ON DEMAND. ALL RIGHTS OF INVENTION OR DESIGN ARE RESERVED.

TOLERANCES	DRAWN	TITLE
X/Y: ± 1/16	SKE	
.XX: ± .030	CHECKED	
.XXX: ± .010	PVR	
ANG: ± 0.5°	APPROVED	
	DATE: 06/12/2023	JOB: P30.4.54.GS.WD.GN
	REF.	DRAWING NO. SS D-SIZE
		SCALE
		REV. 5 SHEET S5 OF S7

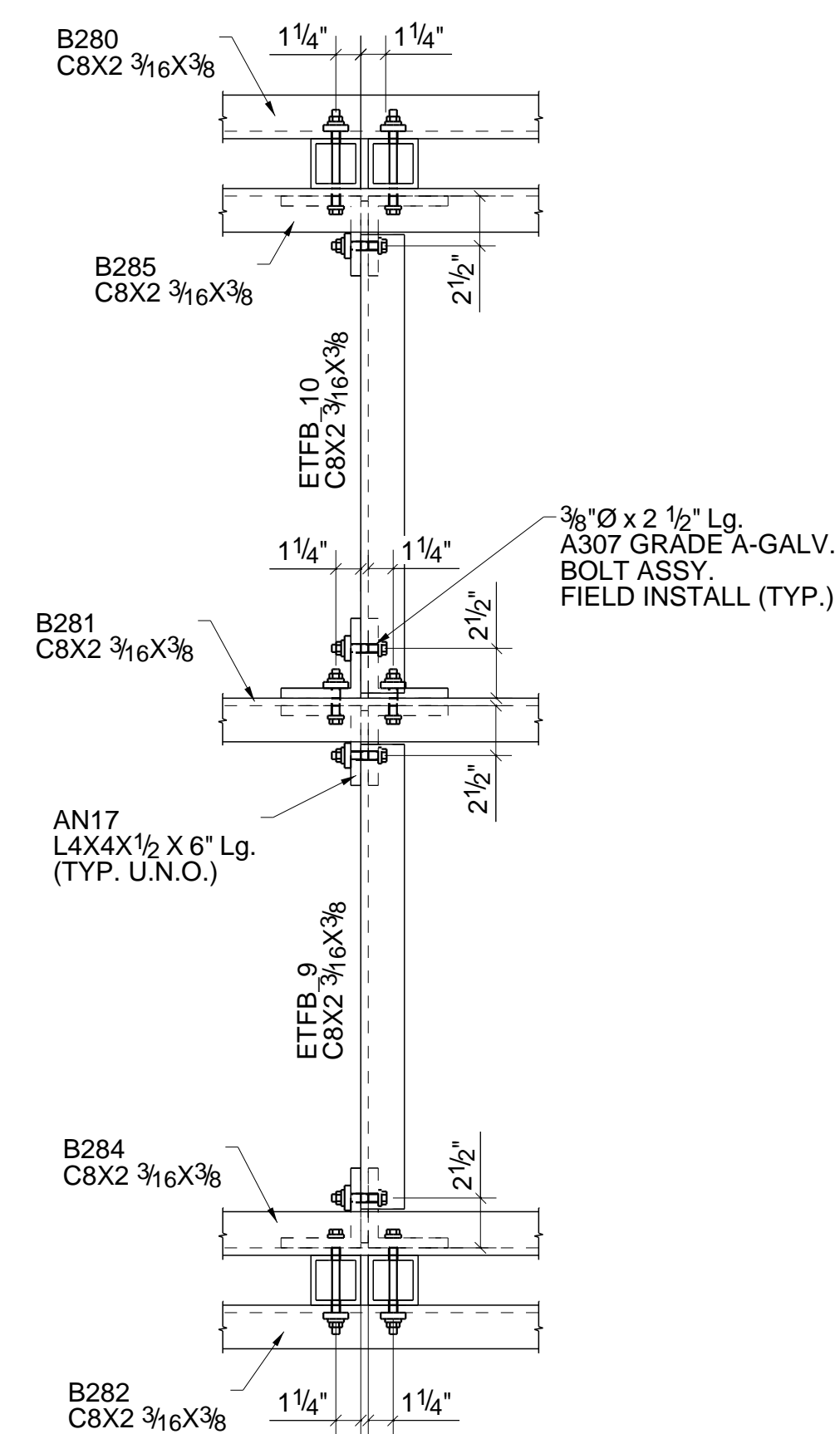
REV.	BY	DATE	DESCRIPTION	REV.	BY	DATE	DESCRIPTION
5	SKE	06/12/2023	FOR SIXTH RELEASE	4	SKE	06/09/2023	FOR FIFTH RELEASE
3	BSH	05/10/2023	FOR FOURTH RELEASE	2	VAR	04/19/2023	FOR THIRD RELEASE
1	VAR	02/14/2023	FOR SECOND RELEASE	0	VAR	02/02/2023	FOR FIRST RELEASE



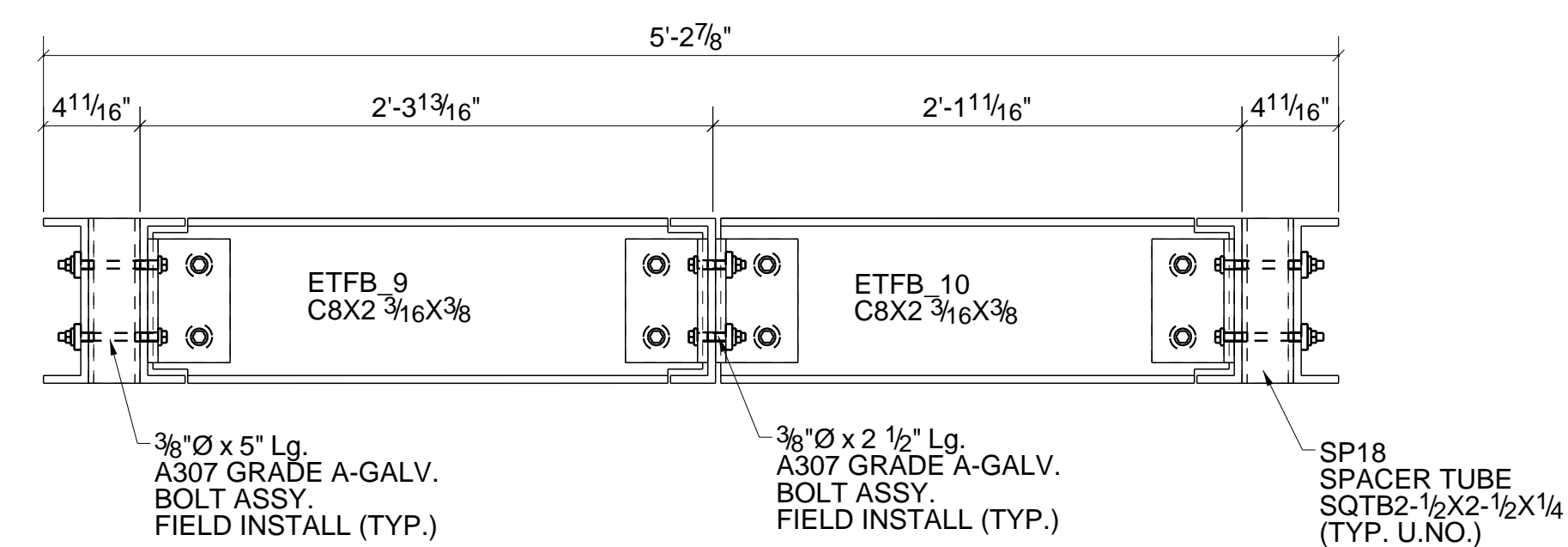
**H**  
S4 DETAIL  
FOR SSQT2-1/2X2-1/2X1/4 DIAGONAL WEB TUBE



**I**  
S4 DETAIL  
FOR SSQT2-1/2X2-1/2X1/4 END DIAGONAL WEB TUBE



**G**  
S2 DETAIL

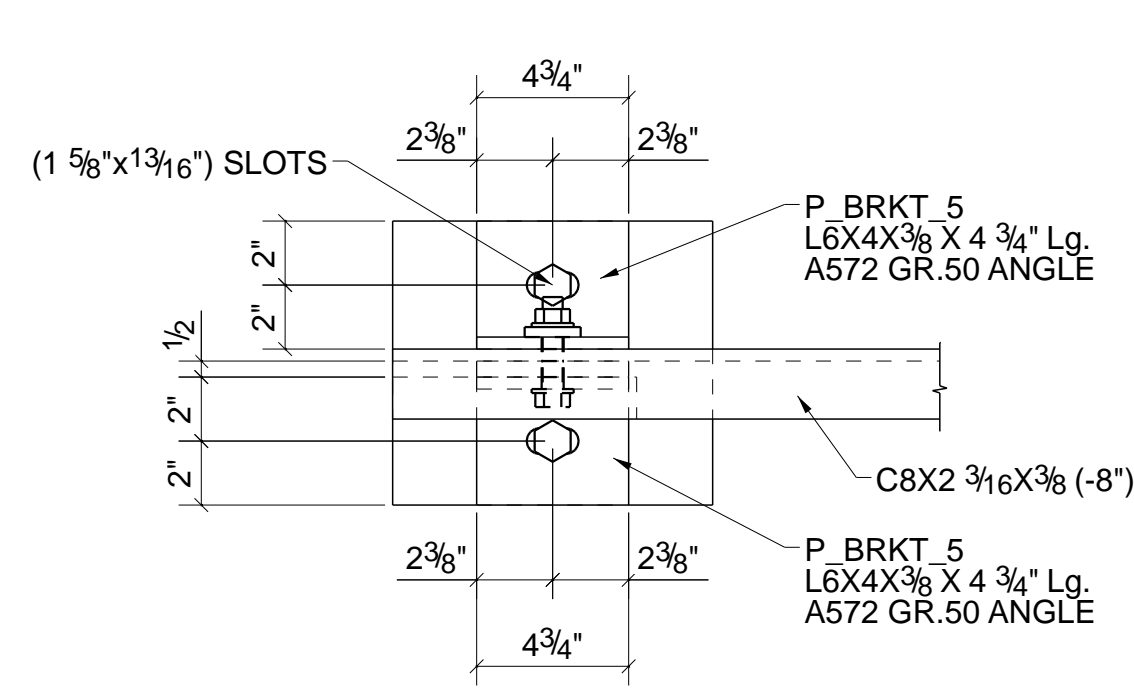


SIDE VIEW

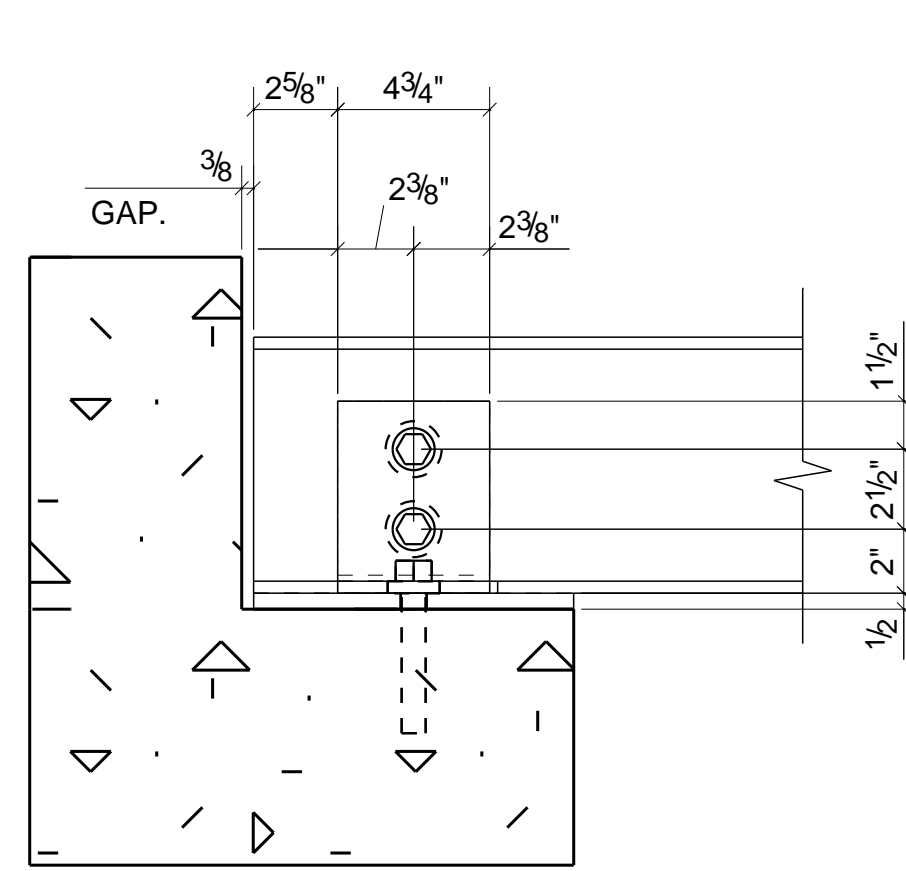
THIS DRAWING IS THE CONFIDENTIAL PROPERTY OF BEDFORD REINFORCED PLASTICS, INC. AND MUST NOT BE MADE PUBLIC OR COPIED, AND IS SUBJECT TO RETURN ON DEMAND. ALL RIGHTS OF INVENTION OR DESIGN ARE RESERVED.

TOLERANCES	DRAWN	SKE	TITLE
X/Y: ± 1/16	CHECKED	PVR	
.XX: ± .030	APPROVED		JOB
			P30.4.54.GS.WD.GN
	DATE:	06/12/2023	DRAWING NO.
	REF.		S6
			D-SIZE
ANG: ± 0.5°			SCALE
			REV. 5
			SHEET S6 OF 57

5	SKE	06/12/2023	FOR SIXTH RELEASE	4	SKE	06/09/2023	FOR FIFTH RELEASE
3	BSH	05/10/2023	FOR FOURTH RELEASE	2	VAR	04/19/2023	FOR THIRD RELEASE
1	VAR	02/14/2023	FOR SECOND RELEASE	0	VAR	02/02/2023	FOR FIRST RELEASE
REV.	BY	DATE	DESCRIPTION	REV.	BY	DATE	DESCRIPTION

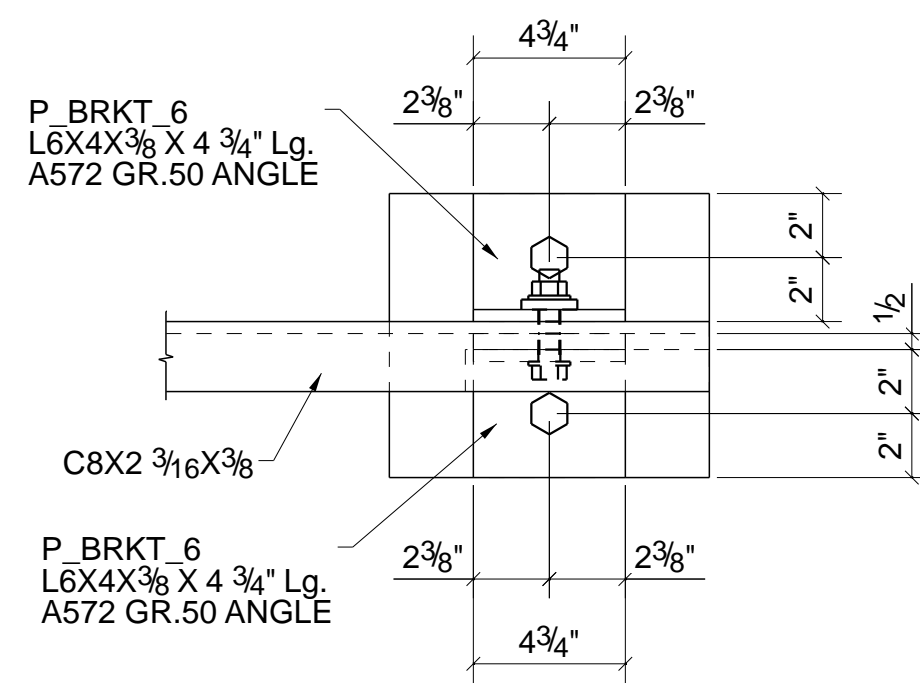


PLAN VIEW

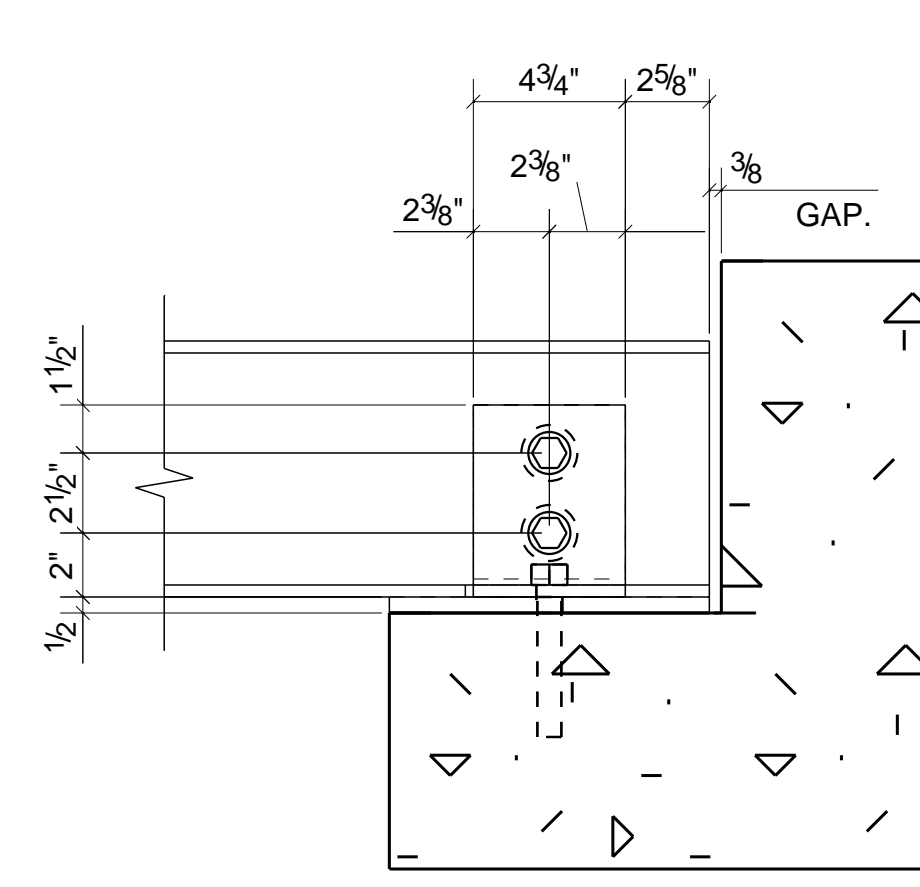


SIDE VIEW

**J**  
S4 BASE CLIP FOR C8X2 3/16X3/8 FLOOR BEAM

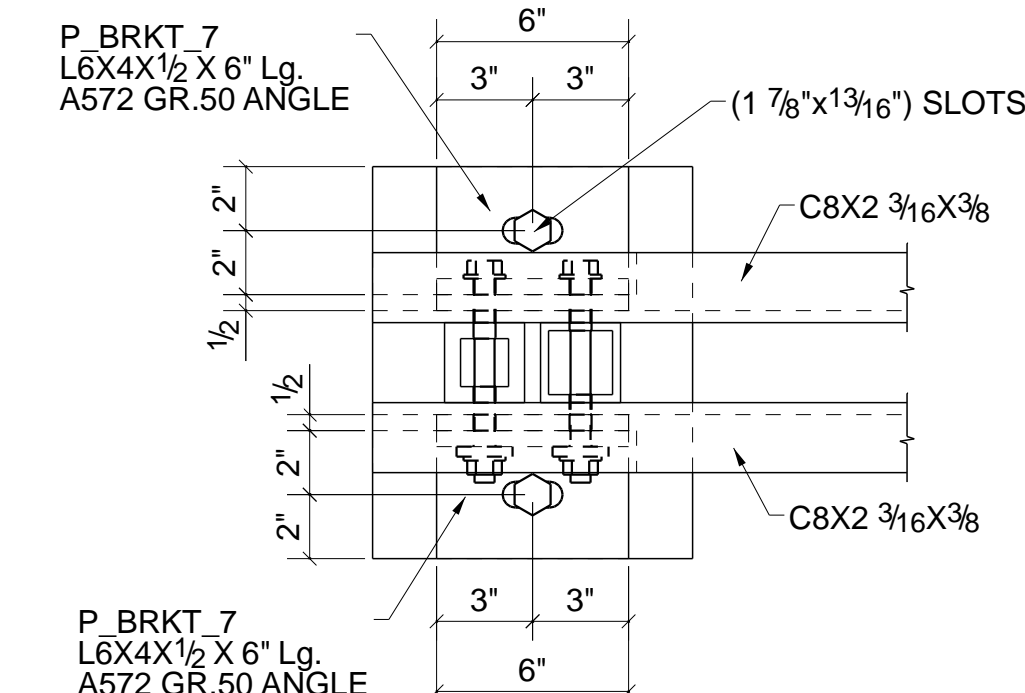


PLAN VIEW

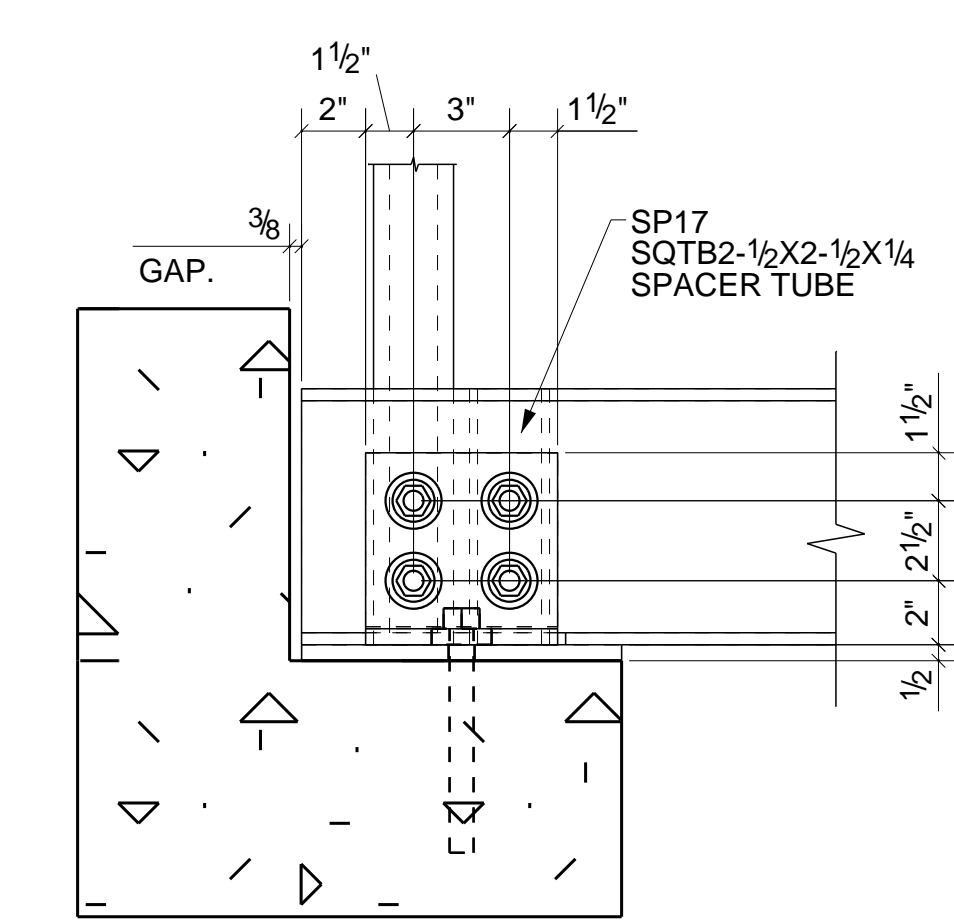


SIDE VIEW

**K**  
S4 BASE CLIP FOR C8X2 3/16X3/8 FLOOR BEAM

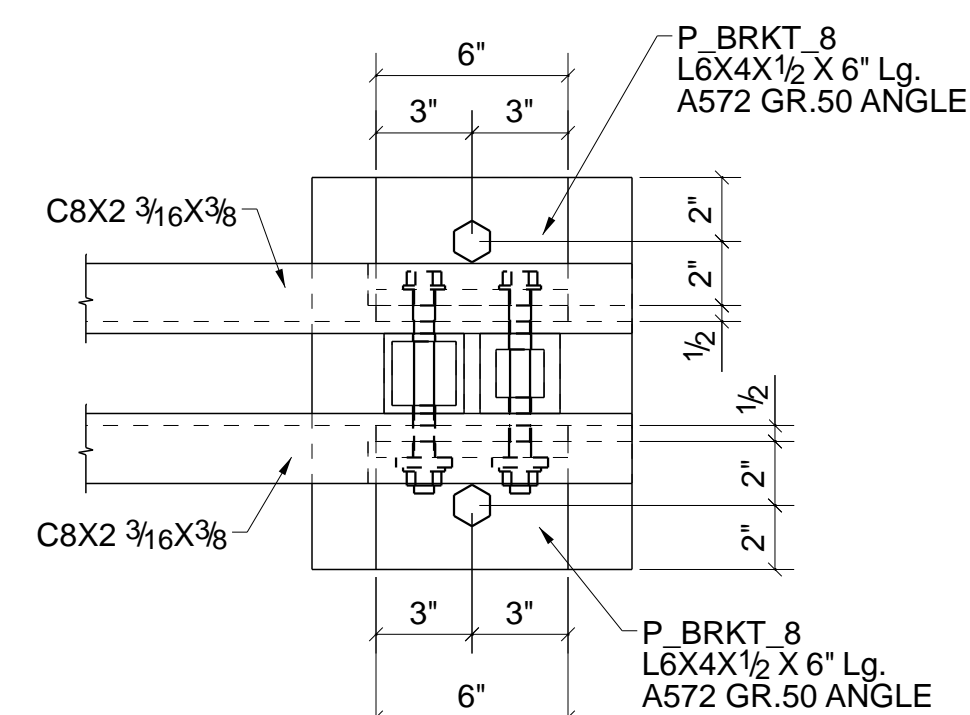


PLAN VIEW

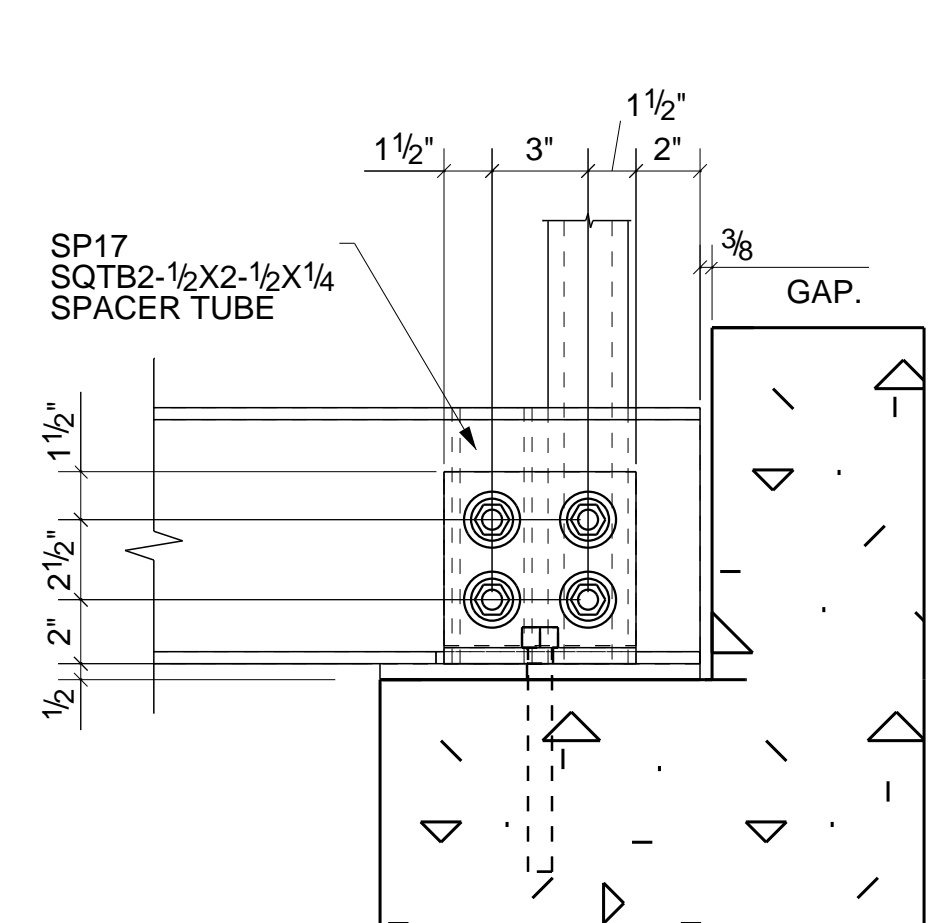


SIDE VIEW

**L**  
S4 BASE CLIP FOR C8X2 3/16X3/8 BOTTOM CHORD BEAM

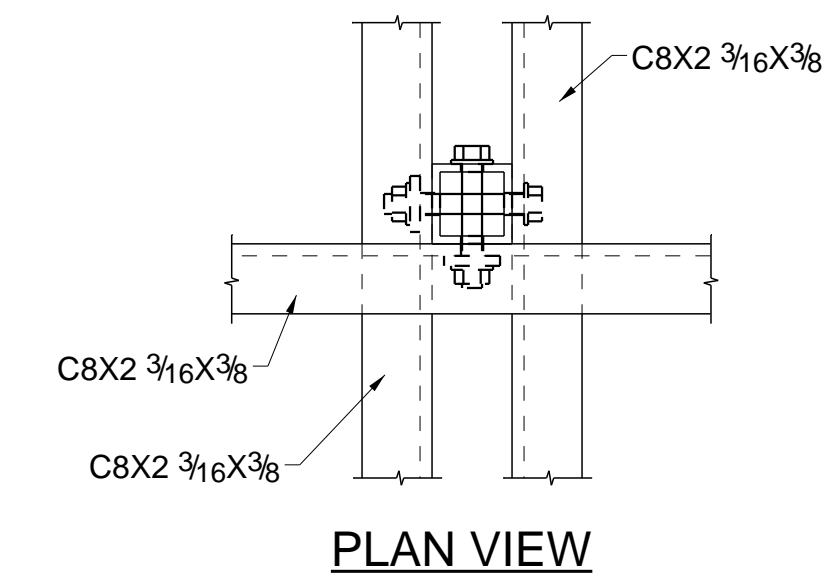


PLAN VIEW

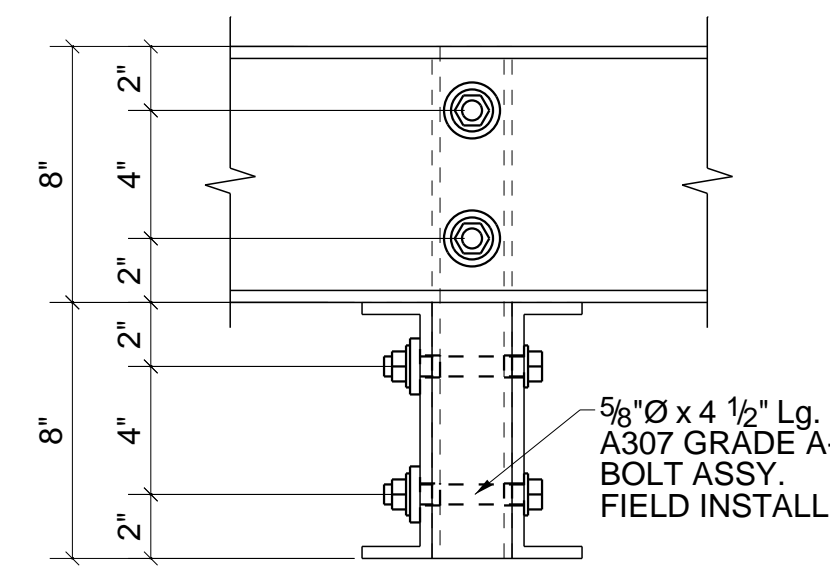


SIDE VIEW

**M**  
S4 BASE CLIP FOR C8X2 3/16X3/8 BOTTOM CHORD BEAM

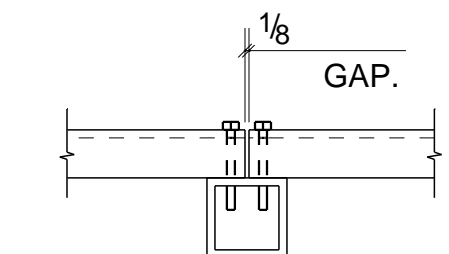


PLAN VIEW

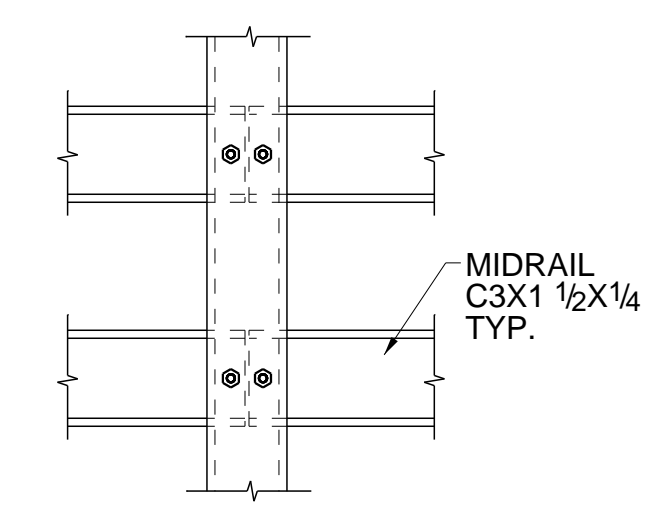


SIDE VIEW

**N**  
S4 FLOOR BEAM TO TRANSVERSE BEAM CONNECTION

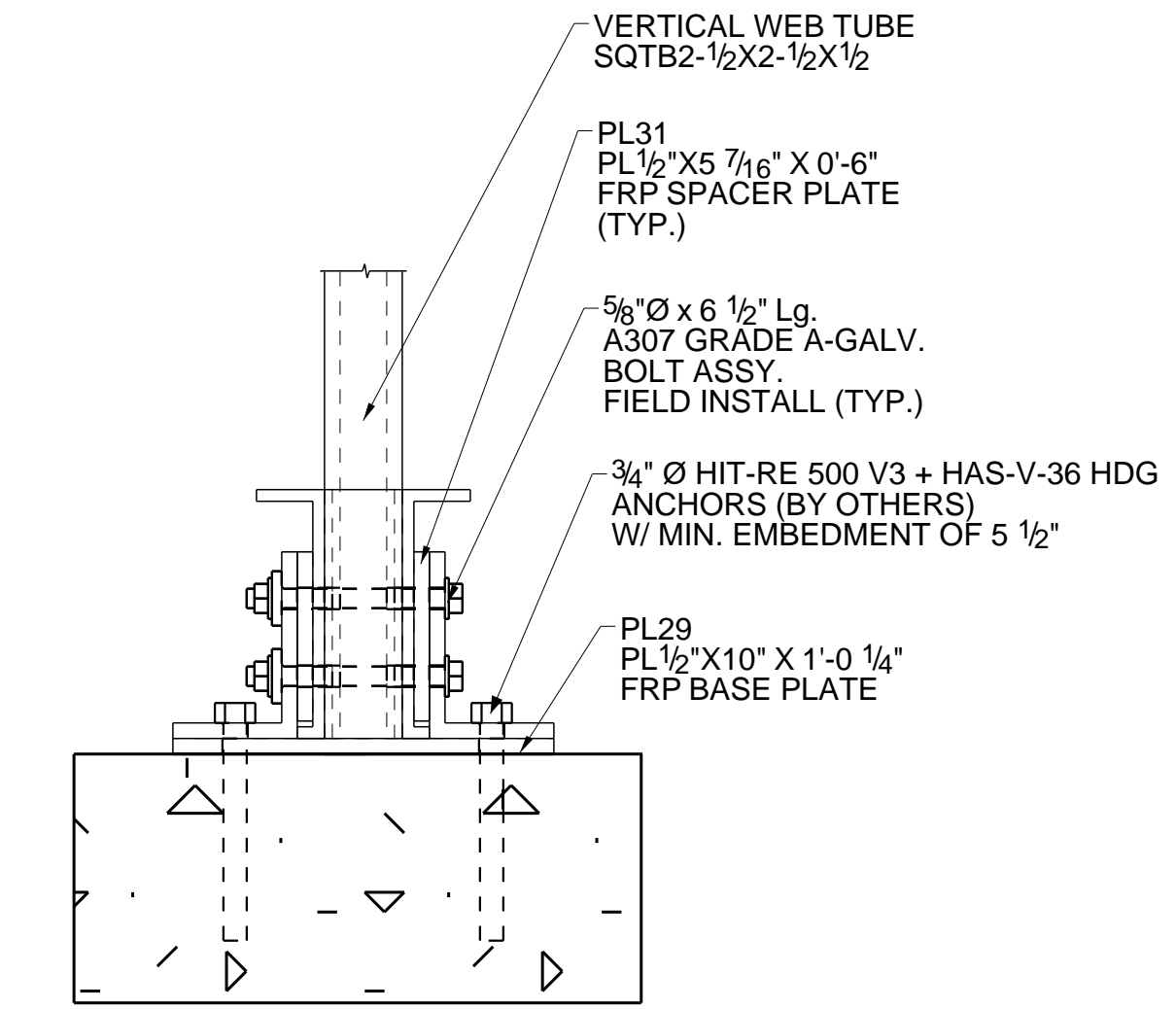


PLAN VIEW



SIDE VIEW

**O**  
S4 MID RAIL SPLICE



SIDE VIEW

**P**  
VERTICAL WEB TUBE SQT B2-1/2X2-1/2X1/2



THIS DRAWING IS THE CONFIDENTIAL PROPERTY OF BEDFORD REINFORCED PLASTICS, INC. AND MUST NOT BE MADE PUBLIC OR COPIED, AND IS SUBJECT TO RETURN ON DEMAND. ALL RIGHTS OF INVENTION OR DESIGN ARE RESERVED.

TOLERANCES	DRAWN	TITLE
X/Y: ± 1/16	SKE	
.XX: ± .030	CHECKED	
.XXX: ± .010	PVR	
ANG: ± 0.5°	APPROVED	
	DATE: 06/12/2023	DRAWING NO. S7
	REF.	SCALE D-SIZE
		JOB P30.4.54.GS.WD.GN
		REV. 5
		SHEET S7 OF S7

REV.	BY	DATE	DESCRIPTION	REV.	BY	DATE	DESCRIPTION
5	SKE	06/12/2023	FOR SIXTH RELEASE	4	SKE	06/09/2023	FOR FIFTH RELEASE
3	BSH	05/10/2023	FOR FOURTH RELEASE	2	VAR	04/19/2023	FOR THIRD RELEASE
1	VAR	02/14/2023	FOR SECOND RELEASE	0	VAR	02/02/2023	FOR FIRST RELEASE